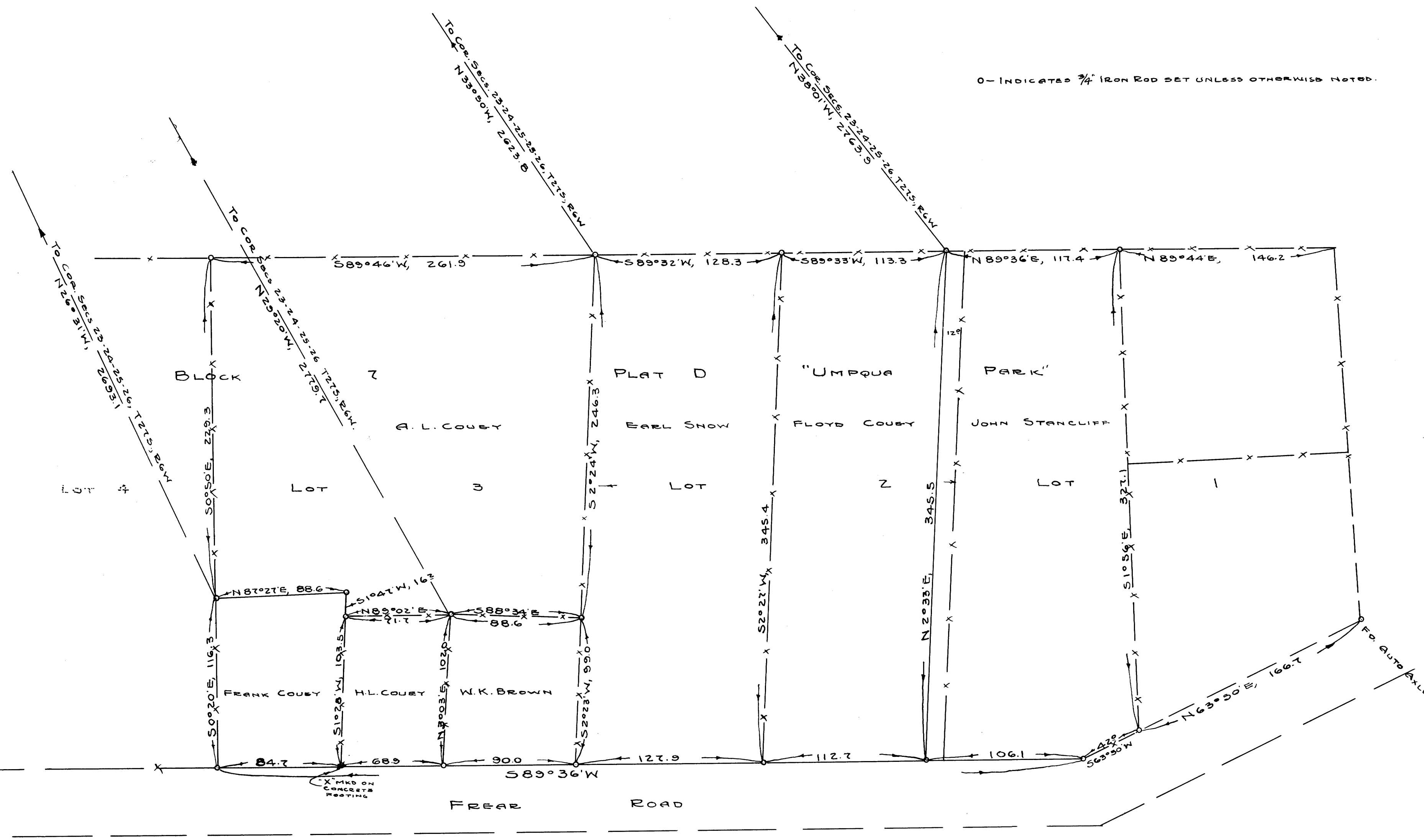
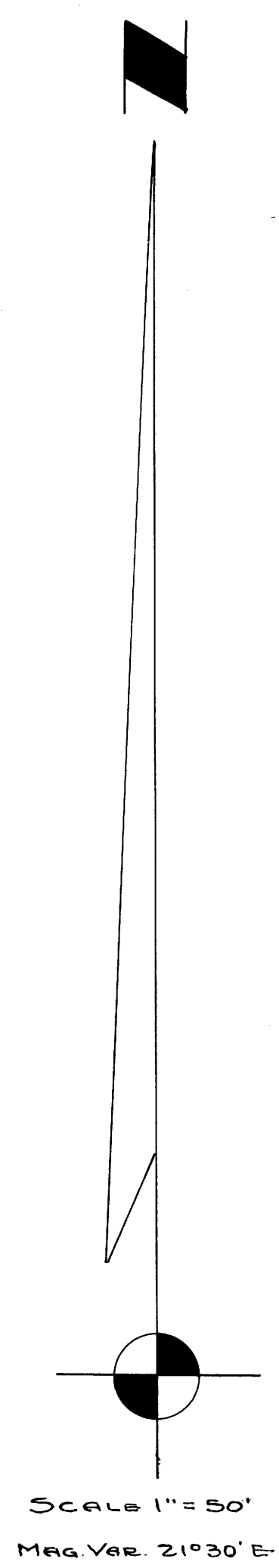


O - INDICATED 3/4" IRON ROD SET UNLESS OTHERWISE NOTED.



SURVEY TO ESTABLISH PROPERTY CORNERS
 BASED ON OCCUPANCY - IN
 LOTS 1-2-3, BLOCK 7, PLAT D, "UMPUQA PARK"

GRANT AND EVANS, ENGINEERS
 ROSEBURG, OREGON
 SURVEYED, JAN. 1952



COUNTY SURVEYORS FILE DATA
 DO NOT REMOVE FROM OFFICE

C.S. FILE 41/111
 MAP FILE M 20-47