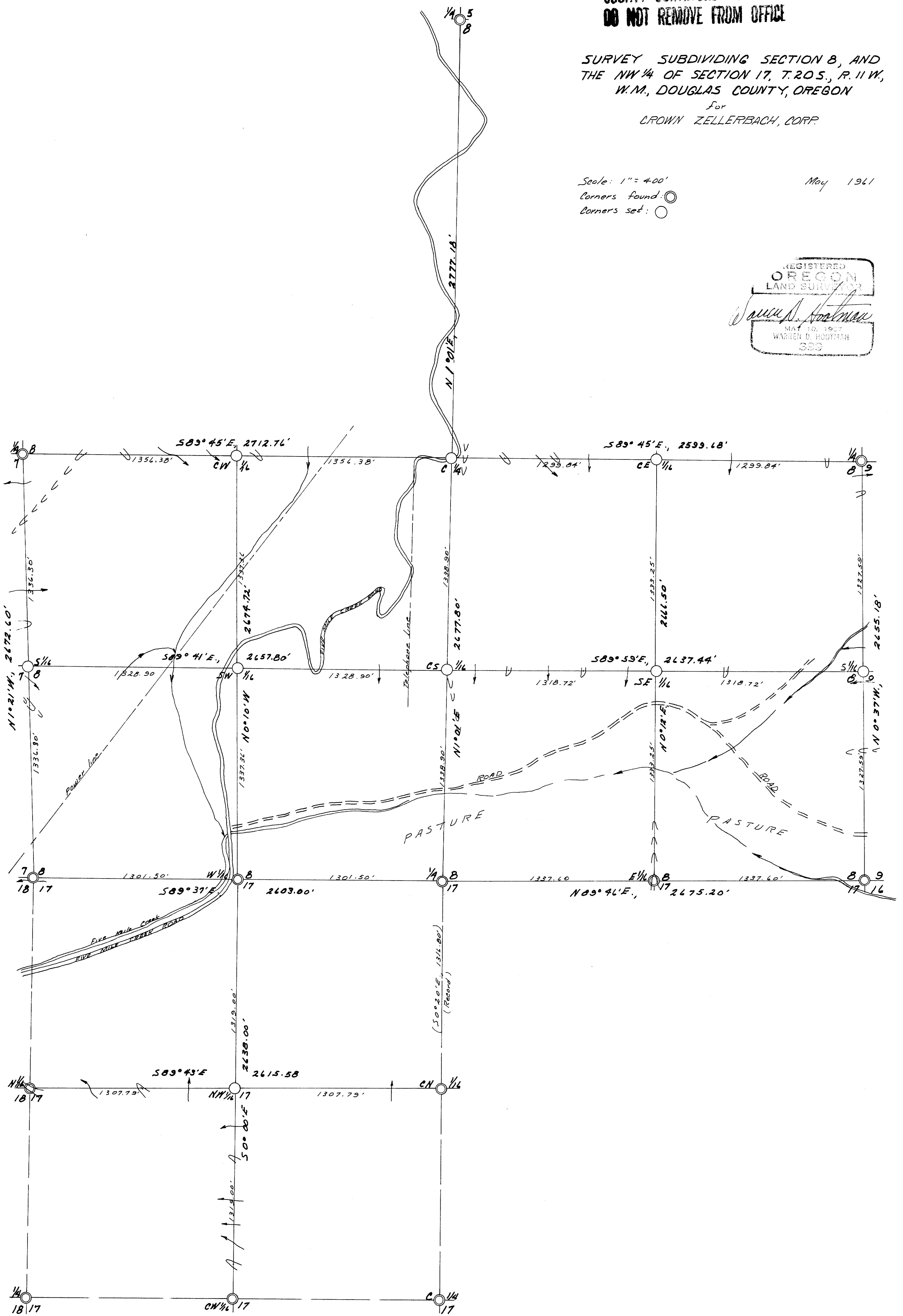


COUNTY SURVEYORS FILE DATA
DO NOT REMOVE FROM OFFICE

SURVEY SUBDIVIDING SECTION 8, AND
THE NW 1/4 OF SECTION 17, T.20S., R.11W.,
W.M., DOUGLAS COUNTY, OREGON
For
CROWN ZELLERBACH, CORP.

Scale: 1" = 400'
Corners found: (circle with dot)
Corners set: (circle)

May 1961



FILED L.L.
RECEIVED

MAY 9 1961

COUNTY SURVEYOR
DOUGLAS COUNTY, ORE.