

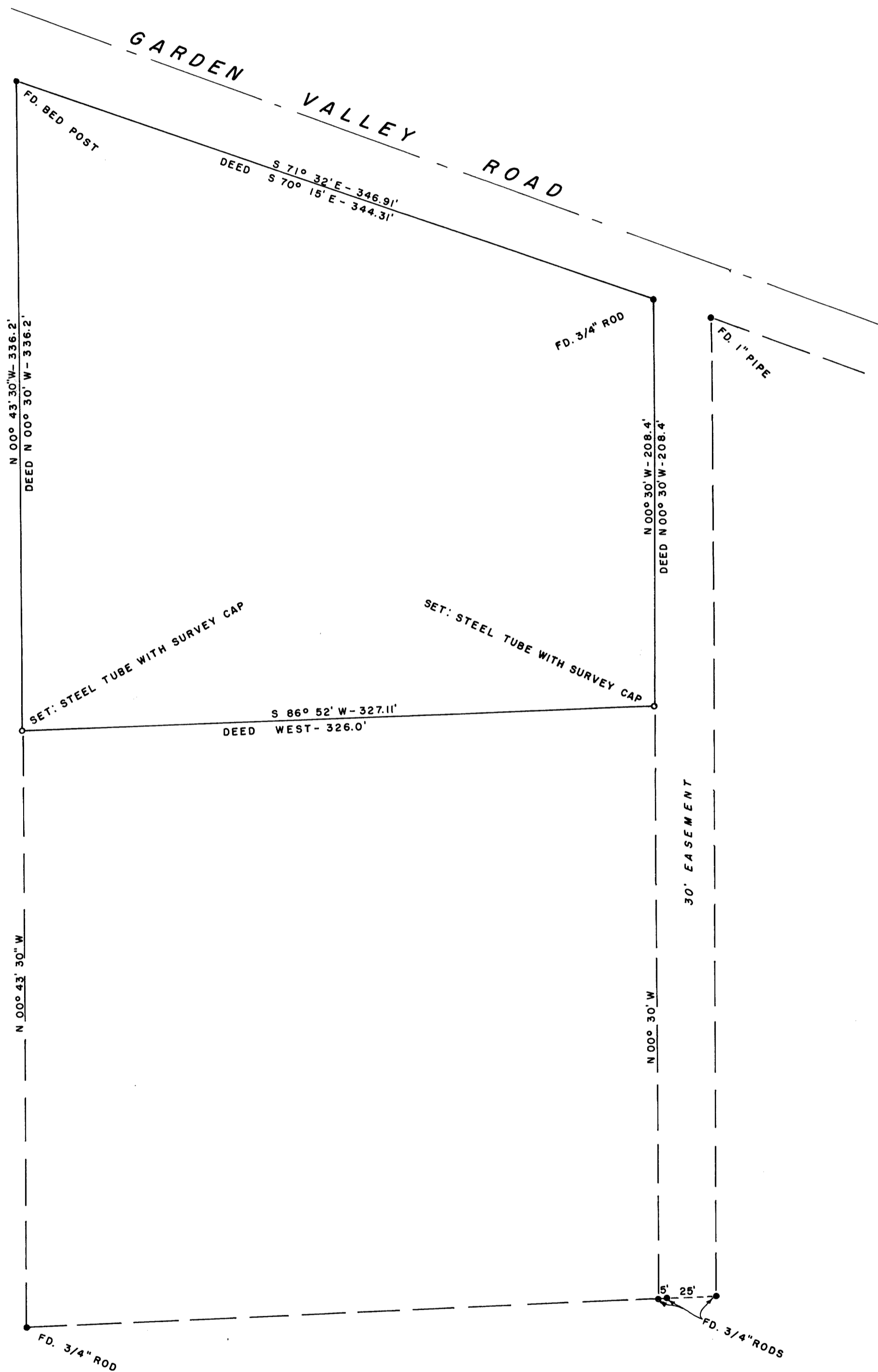
27-02W
COUNTY SURVEYORS FILE DATA
DO NOT REMOVE FROM OFFICE

SURVEY OF A PORTION OF SECTION 11, T27S, R6W, W.M.

SURVEYED FOR: E. CARLTON
SURVEYED BY: G. R. LECKLIDER

MAY, 1961
SCALE: 1" = 50'

SURVEY BASED ON CONTROL ESTABLISHED BY JAMES W. BYRON AS PER G.S. FILE 44/68.



FILED *L.L.*
RECEIVED
MAY 1961
COUNTY SURVEYOR
DOUGLAS COUNTY, OREGON