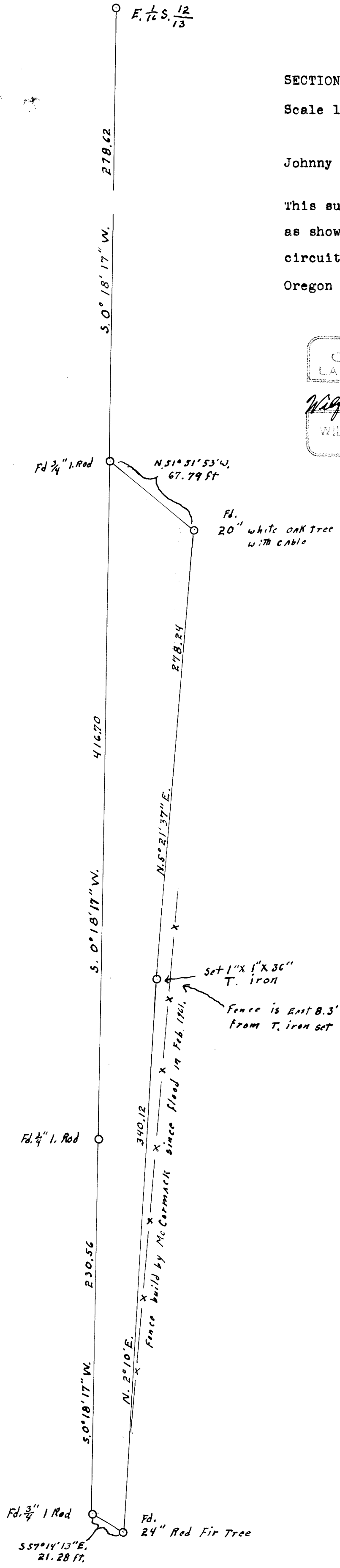
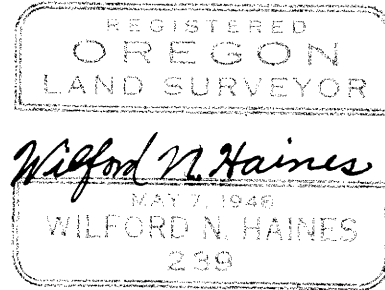


COUNTY SURVEYORS FILE DATA
DO NOT REMOVE FROM OFFICE

SECTION 13, T.22 S., R.6 W. W.M.
Scale 1" = 50' Feb. 1961.
for
Johnny Carls Drain, Ore.

This survey to determine lines
as shown in a decree of the
circuit court of the state of
Oregon in case No. 22502.



FILED
RECEIVED

MAY 7 1961

COUNTY SURVEYOR
DOUGLAS COUNTY, ORE.