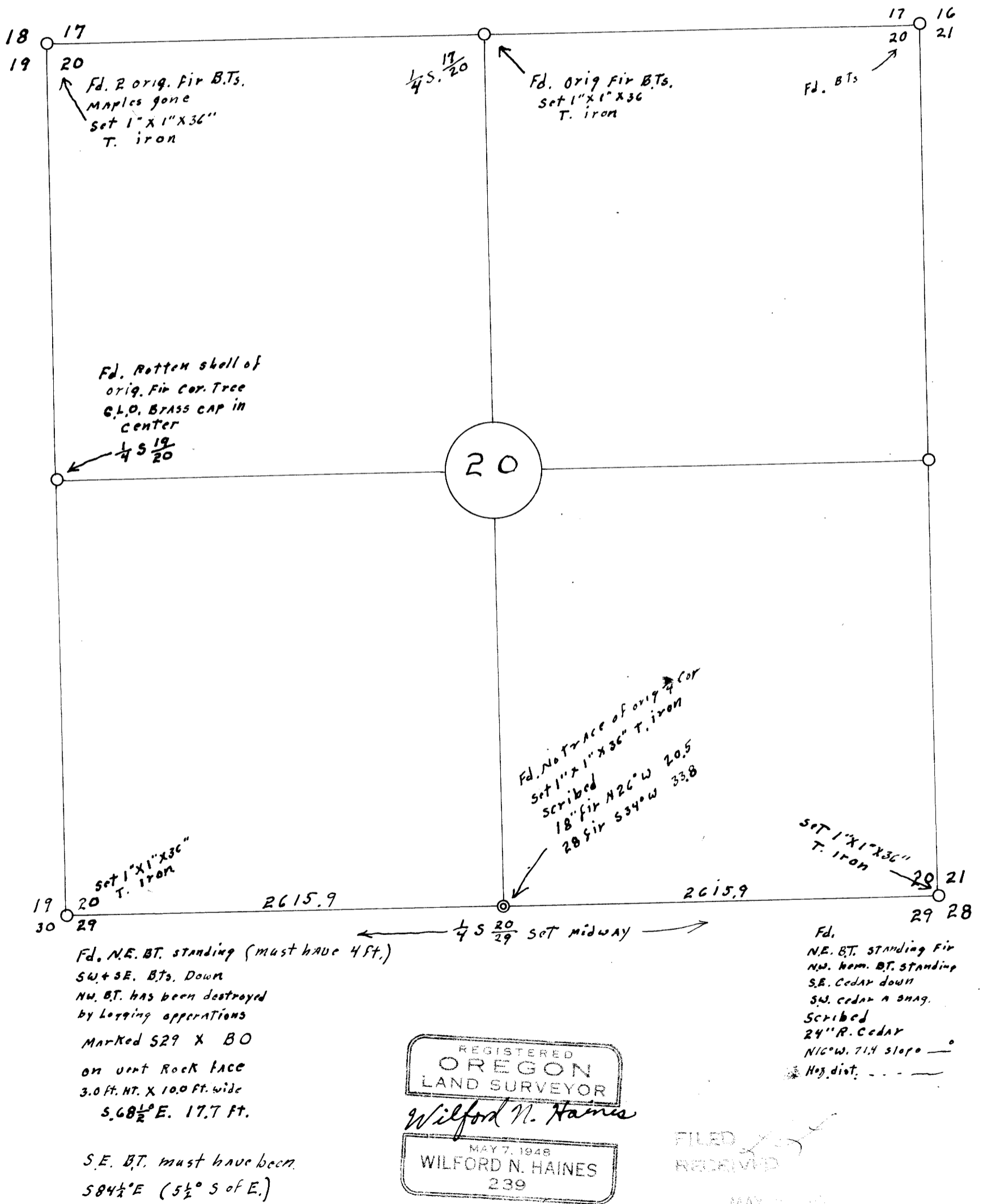


**COUNTY SURVEYORS FILE DATA
DO NOT REMOVE FROM OFFICE**

SECTION 20, T.20 S., R.7 W. W.M.
for
WOOLLEY LOGGING CO., DRAIN, OREGON.
Scale 8" = 1 mile ±



REGISTERED
OREGON
LAND SURVEYOR
Wilford N. Haines
MAY 7, 1948
WILFORD N. HAINES
239

FILED
RECEIVED
MAY 2 1948

COUNTY SURVEYOR
DOUGLAS COUNTY, OREGON

O+

M 20 - 38