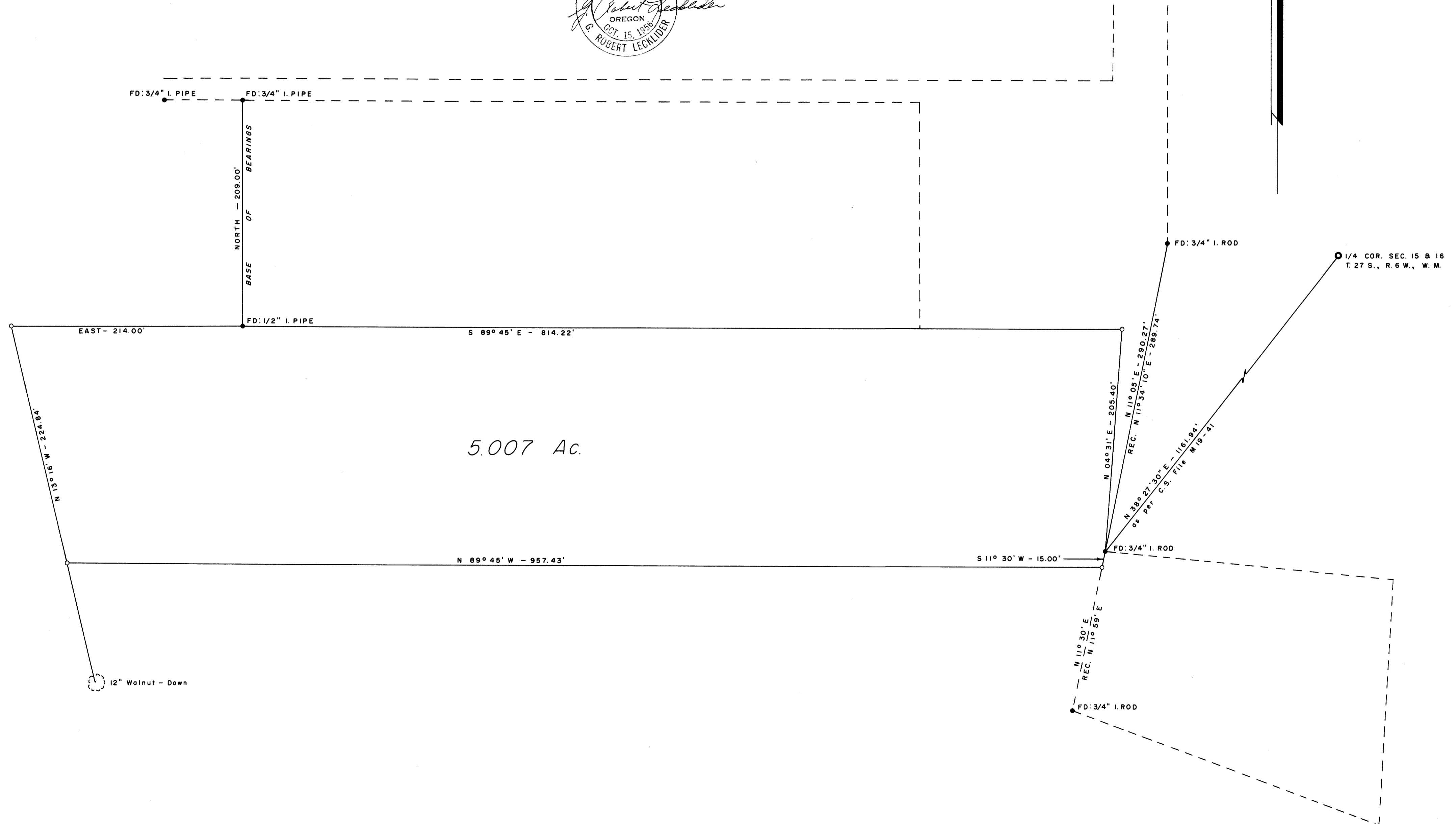


COUNTY SURVEYORS FILE DATA
DO NOT REMOVE FROM OFFICE

SURVEY IN
SE 1/4, SECTION 16, T. 27 S., R. 6 W., W.M.
SURVEYED FOR: HARLAN MOORE
SURVEYED BY: G. R. LECKLIDER - ENGINEER
APRIL, 1961
SCALE: 1" = 60'

○ DENOTES STEEL TUBE WITH SURVEY CAP SET



FILED
RECEIVED
APR 12 1961
COUNTY SURVEYOR
DOUGLAS COUNTY, ORE.

M 20-32

MAP FILE # 207-32