

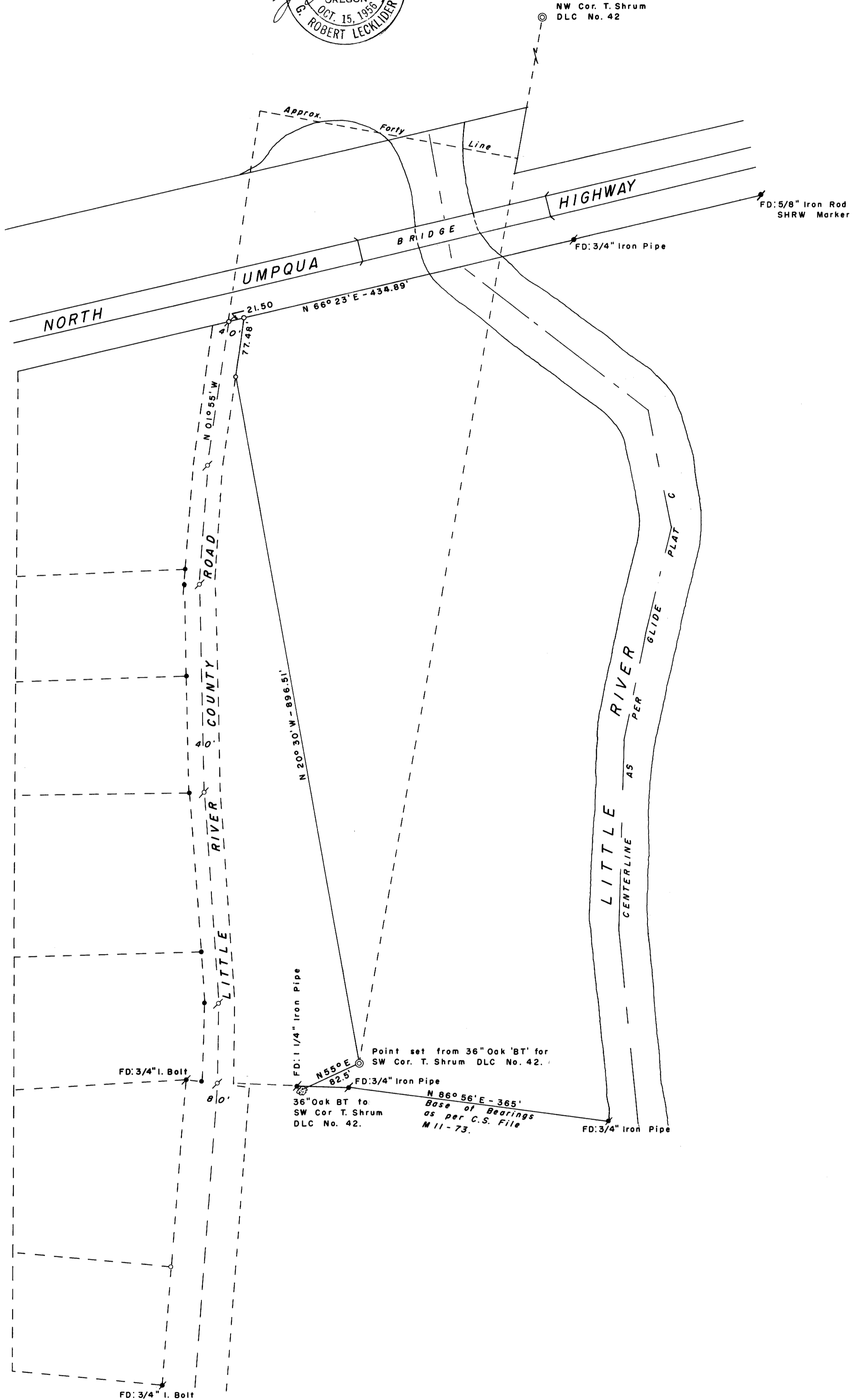
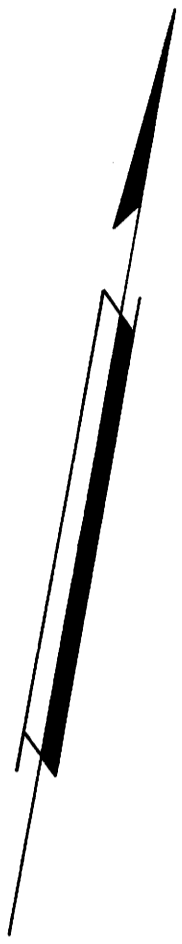
COUNTY SURVEYORS FILE DATA  
DO NOT REMOVE FROM OFFICE

# SURVEY IN

## SECTION 19, T. 26 S., R. 3 W., W. M.

SURVEYED FOR: HELEN GLENN  
SURVEYED BY: G. R. LECKLIDER - ENGINEER  
APRIL, 1961  
SCALE: 1" = 100'

- Denotes Steel Tube with Survey Cap Set
- Denotes Steel Tube with Survey Cap Found
- ⊕ Denotes P-K Nail Set
- ✱ Denotes Monument Found



FILED  
RECEIVED

APR 11 1961

COUNTY SURVEYOR  
DOUGLAS COUNTY, ORE.