

12-000  
12-02W

# ALEXANDER PARCELS · KENT CREEK · SEC. 6 · T29S · R6W - DOUGLAS COUNTY · OREGON

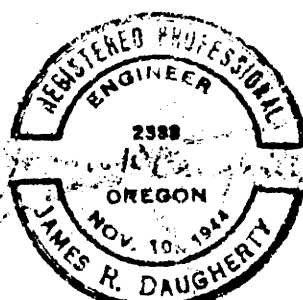
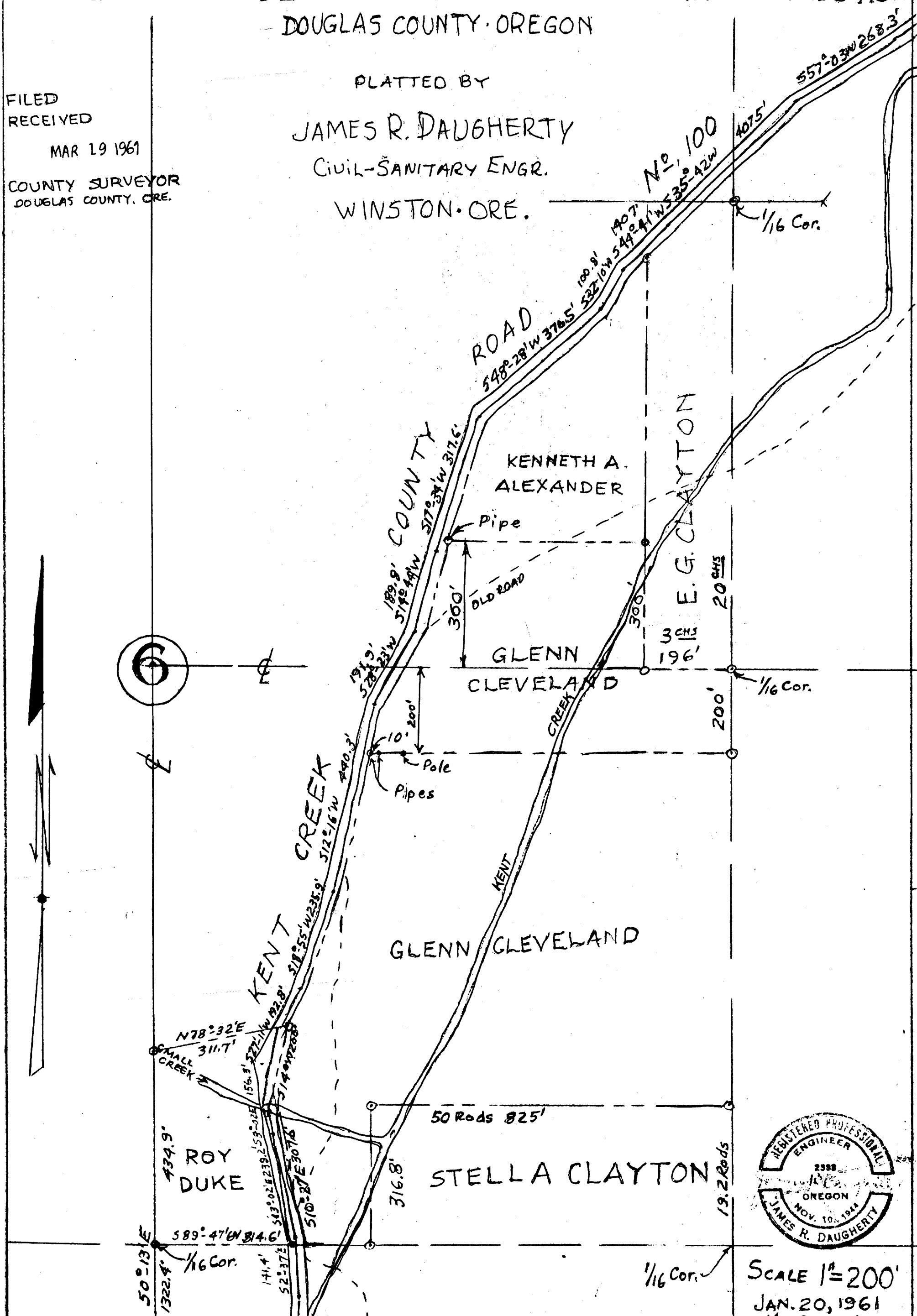
FILED  
RECEIVED

MAR 19 1961

COUNTY SURVEYOR  
DOUGLAS COUNTY, ORE.

PLATTED BY

JAMES R. DAUGHERTY  
CIVIL-SANITARY ENGR.  
WINSTON, ORE.



SCALE 1"=200'  
JAN. 20, 1961

COUNTY SURVEYORS FILE  
DO NOT REMOVE FROM OFFICE

THIS COPY MADE FROM  
A XEROX 2510  
DATE July 14, 89