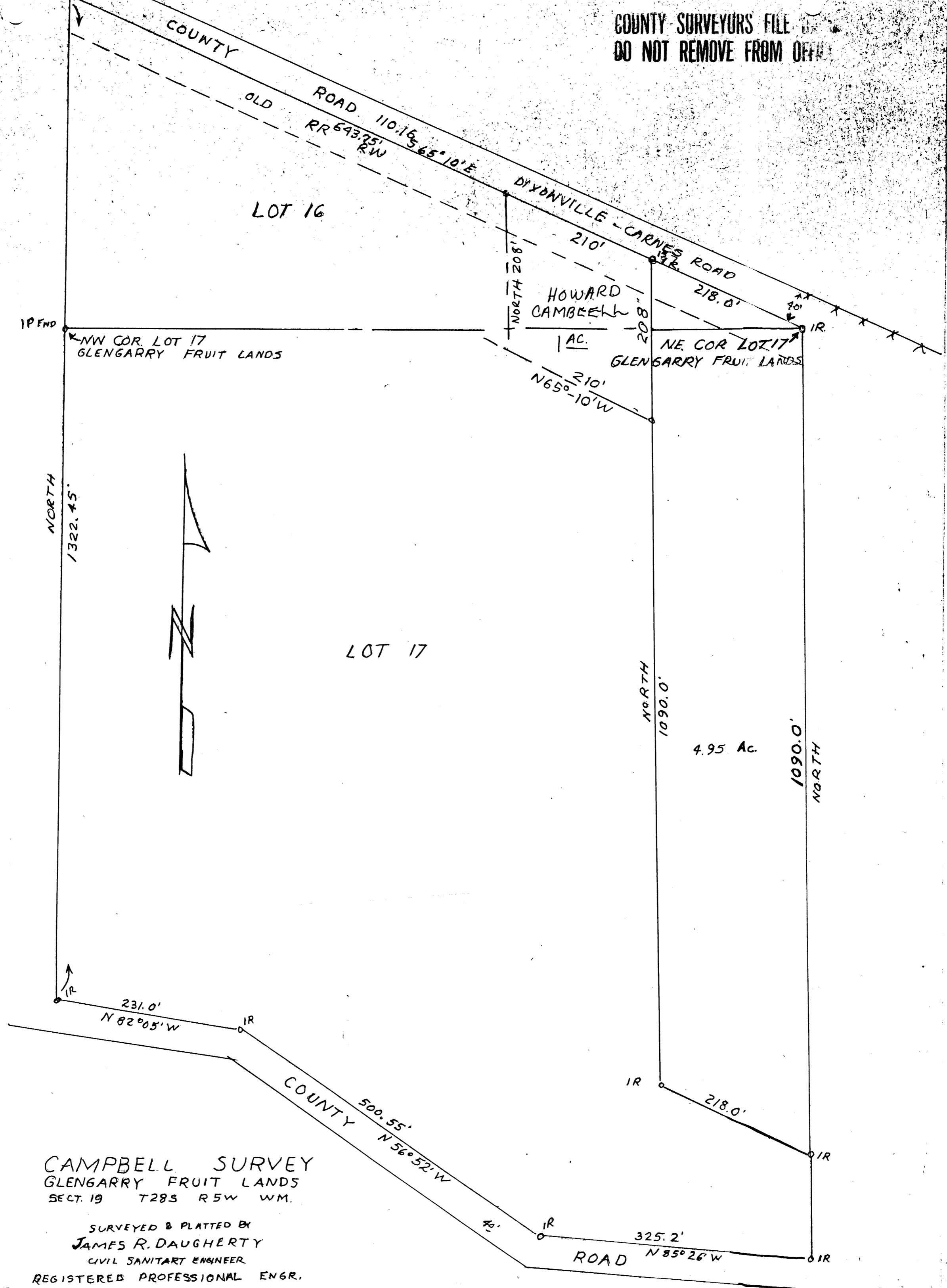


M 20-20

COUNTY SURVEYORS FILE
DO NOT REMOVE FROM OFFICE



THIS COPY MADE FROM
A XEROX 2510
DATE July 14, 89

CAMPBELL SURVEY
GLEN GARRY FRUIT LANDS
SECT. 19 T28S R5W WM.

SURVEYED & PLATTED BY
JAMES R. DAUGHERTY
CIVIL SANITARY ENGINEER
REGISTERED PROFESSIONAL ENGR.
ROSEBURG OREGON

SCALE: 1" = 100'

DATE: JAN 16, 1961.

FILED
RECEIVED

COUNTY SURVEYOR
DOUGLAS COUNTY, ORE.

M 20-20