

COUNTY SURVEYORS FILE DATA  
DO NOT REMOVE FROM OFFICE

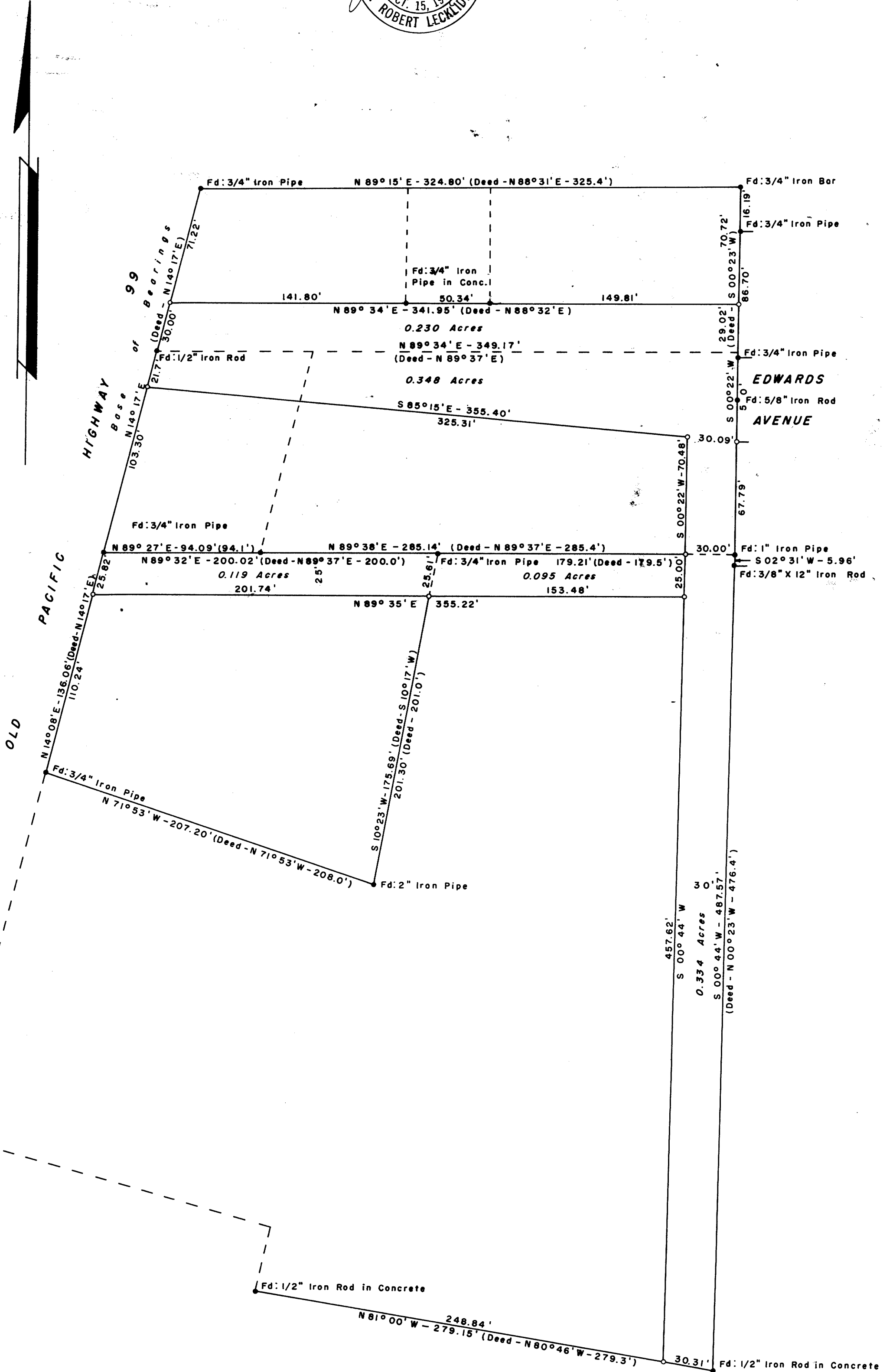
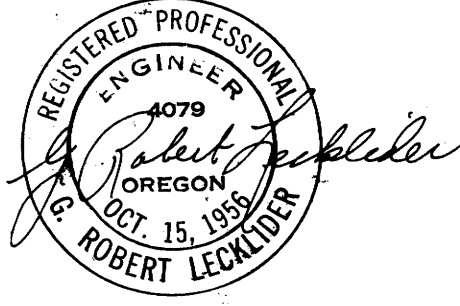
# SURVEY FOR DEED DESCRIPTION SEC. 21, T. 28 S., R. 6 W., W. M.

SURVEYED FOR: THE CITY OF WINSTON  
SURVEYED BY: G. R. LECKLIDER - ENG'R.

MARCH, 1961  
SCALE: 1" = 50'

o DENOTES STEEL TUBE WITH SURVEY CAP SET

NOTE: REFER TO C.S. FILE 51/113



FILED *L.L.*  
RECEIVED

MAR 3 1961

COUNTY SURVEYOR  
DOUGLAS COUNTY, ORE.