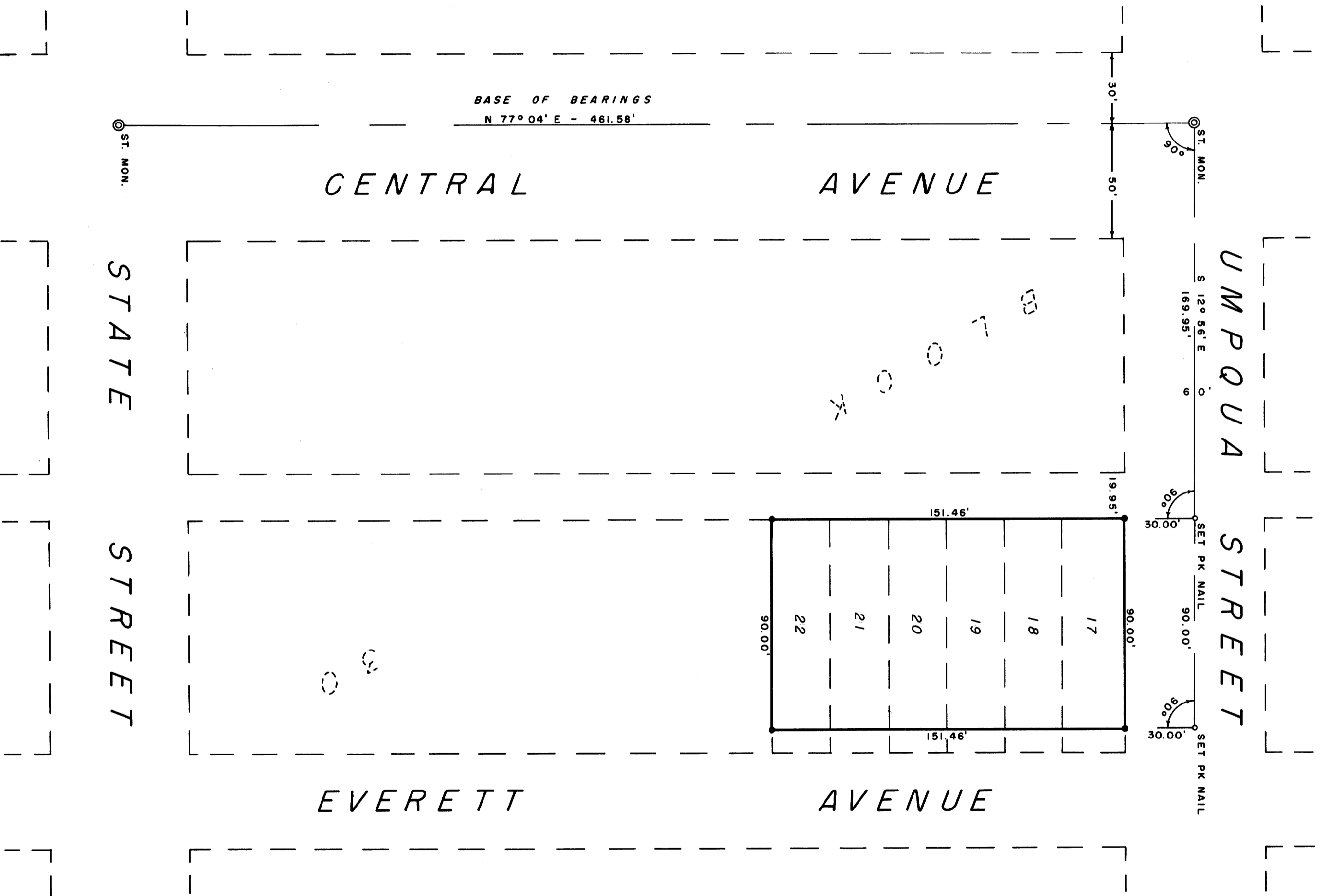
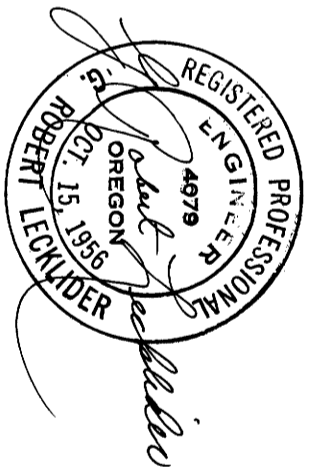
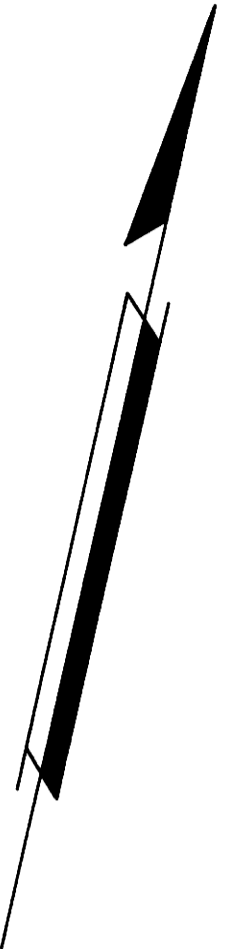


COUNTY SURVEYORS FILE NO.  
DO NOT REMOVE FROM OFFICE

# SURVEY TO SET PROPERTY CORNERS IN BLOCK 30, OF AMENDED PLAT OF THE TOWNSITE OF SUTHERLIN, DOUG. CTY. ORE.

SURVEYED FOR: R. J. SCHMIDT  
SURVEYED BY: G. R. LECKLIDER - ENGINEER  
FEBRUARY, 1961  
SCALE: 1" = 40'

• DENOTES STEEL TUBE WITH SURVEY CAP SET  
NOTE: REFER TO MAP FILE M18-1



FILED  
RECEIVED

FEB 23 1961

COUNTY SURVEYOR  
DOUGLAS COUNTY, ORE.