

COUNTY SURVEYORS FILE D
DO NOT REMOVE FROM OFF

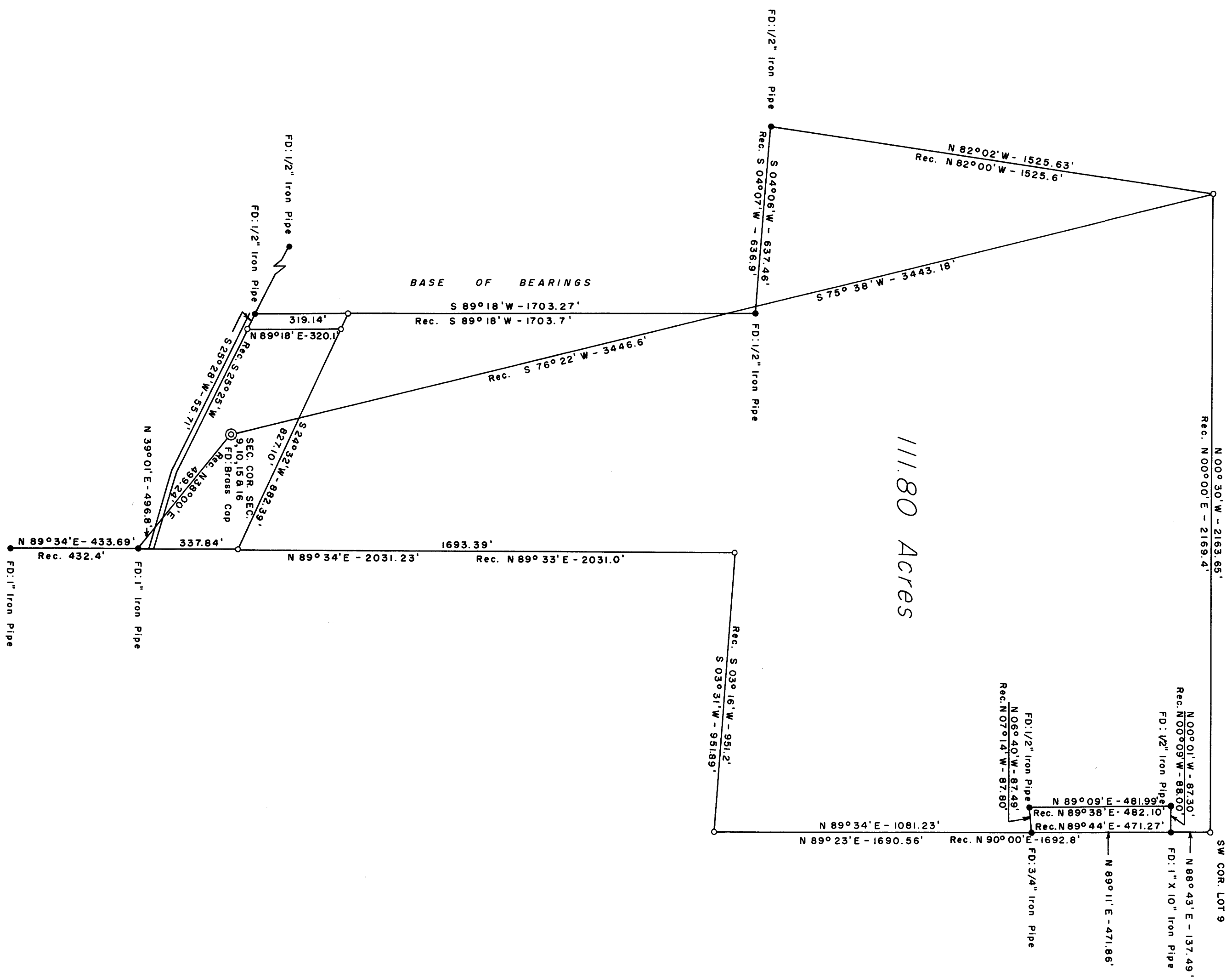
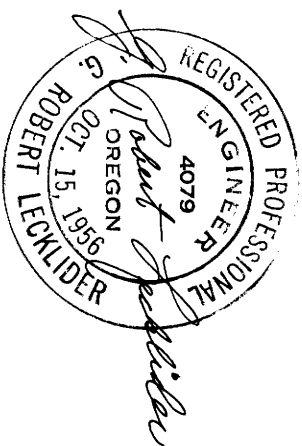
FILED
RECEIVED

FEB. 13 1961

COUNTY SURVEYOR
DOUGLAS COUNTY, ORE.

SURVEY FOR DEED DESCRIPTION SECTION 9, 10, 15 & 16, T. 27 S., R. 6 W., W.M. SURVEYED FOR: R. B. & D. E. BAILEY SURVEYED BY: G. R. LECKLIDER - ENGINEER FEBRUARY, 1961 SCALE: 1" = 300'

0 Denotes 3/4" Iron Pipe Set
Note: Refer To Map File M. 1-75



111.80 Acres