

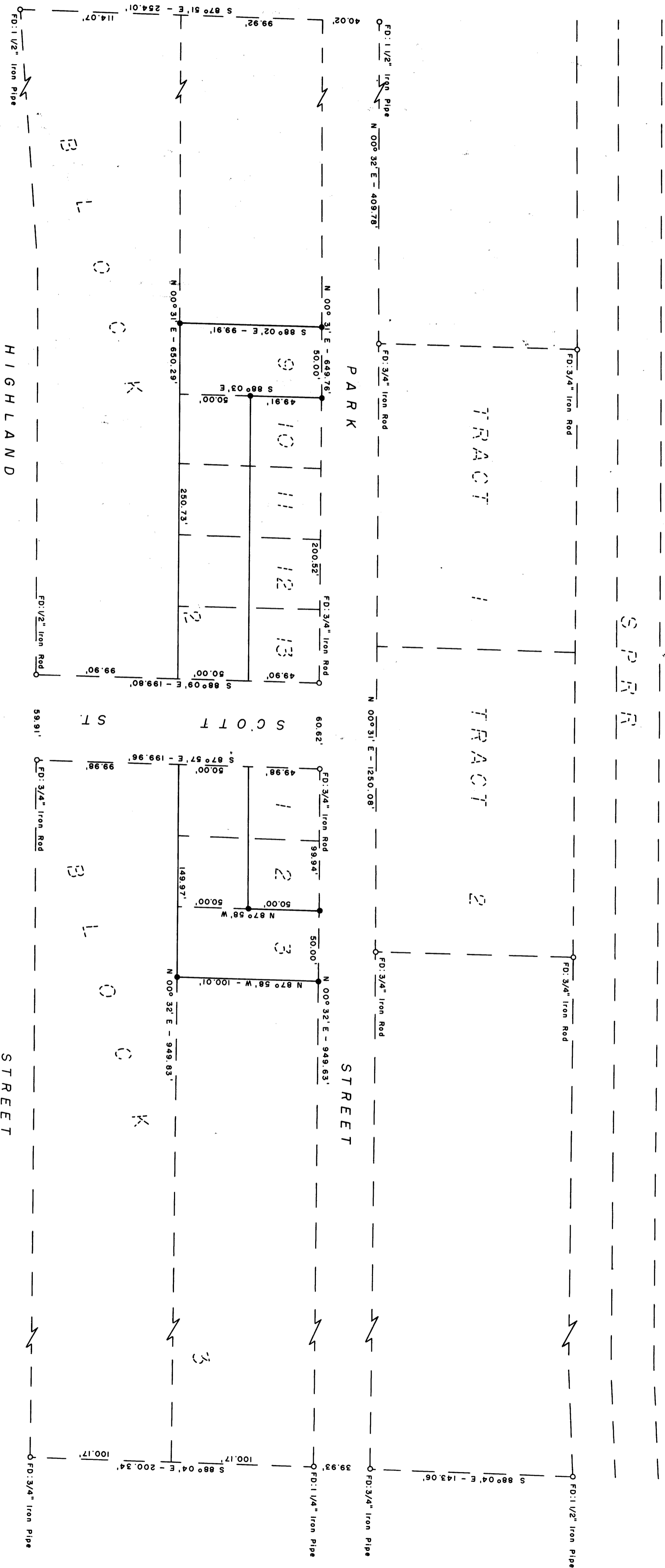
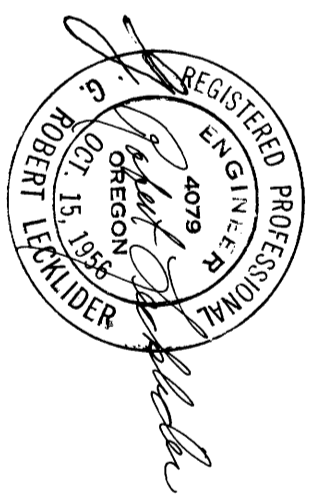
FILED
RECEIVED
FEB 1961
COUNTY SURVEYOR
DOUGLAS COUNTY, ORE.

SURVEY TO ESTABLISH PROPERTY CORNERS IN BLOCK 2 & 3, RESUBDIVISION OF GADDIS PLAT 'A' DOUGLAS COUNTY, OREGON

SURVEYED FOR: HUDSON HOUSE INC.
SURVEYED BY: G. ROBERT LECKLIDER - ENGINEER

JANUARY, 1961
SCALE: 1" = 50'

• DENOTES STEEL TUBE WITH SURVEY CAP SET
NOTE: REFER TO C.S. FILE 47/79



COUNTY SURVEYORS FILE THIS
DO NOT REMOVE FROM OFFICE