

COUNTY SURVEYOR  
DO NOT REMOVE FROM OFFICE

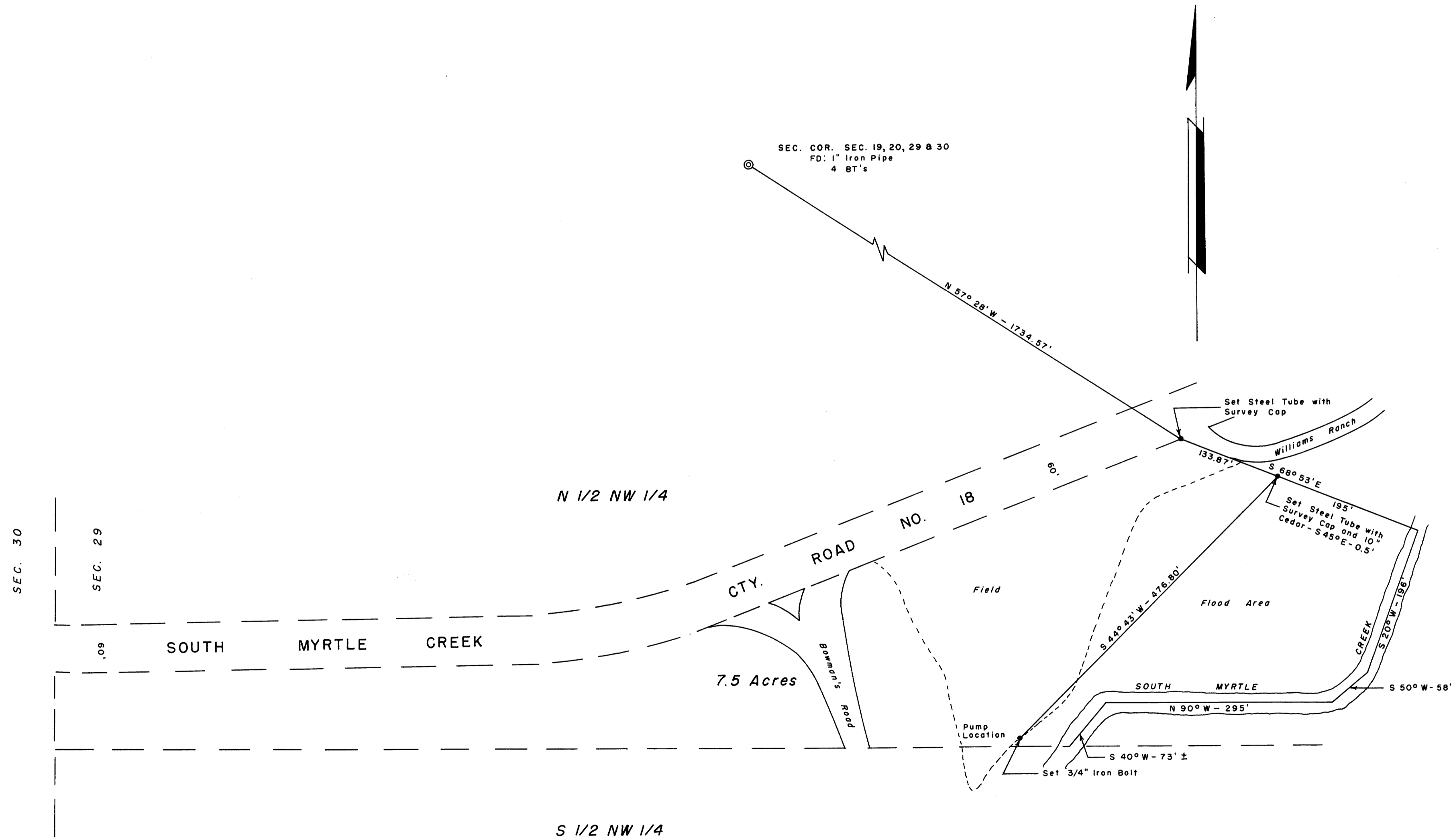
FILED  
RECEIVED

JAN 27 1961

COUNTY SURVEYOR  
DOUGLAS COUNTY, ORE.

# SURVEY FOR DEED DESCRIPTION SECTION 29, T.29 S., R. 4 W., W.M.

SURVEYED FOR: W. E. WILLIAMS  
SURVEYED BY: G. R. LECKLIDER - ENG'R.      JANUARY, 1961  
SCALE: 1" = 100'



REGISTERED PROFESSIONAL  
ENGINEER  
A079  
G. Robert Lecklider  
OREGON  
OCT. 15, 1958  
ROBERT LECKLIDER

MAP FILE 20  
MAP FILE M 20

MAP FILE M-20-10