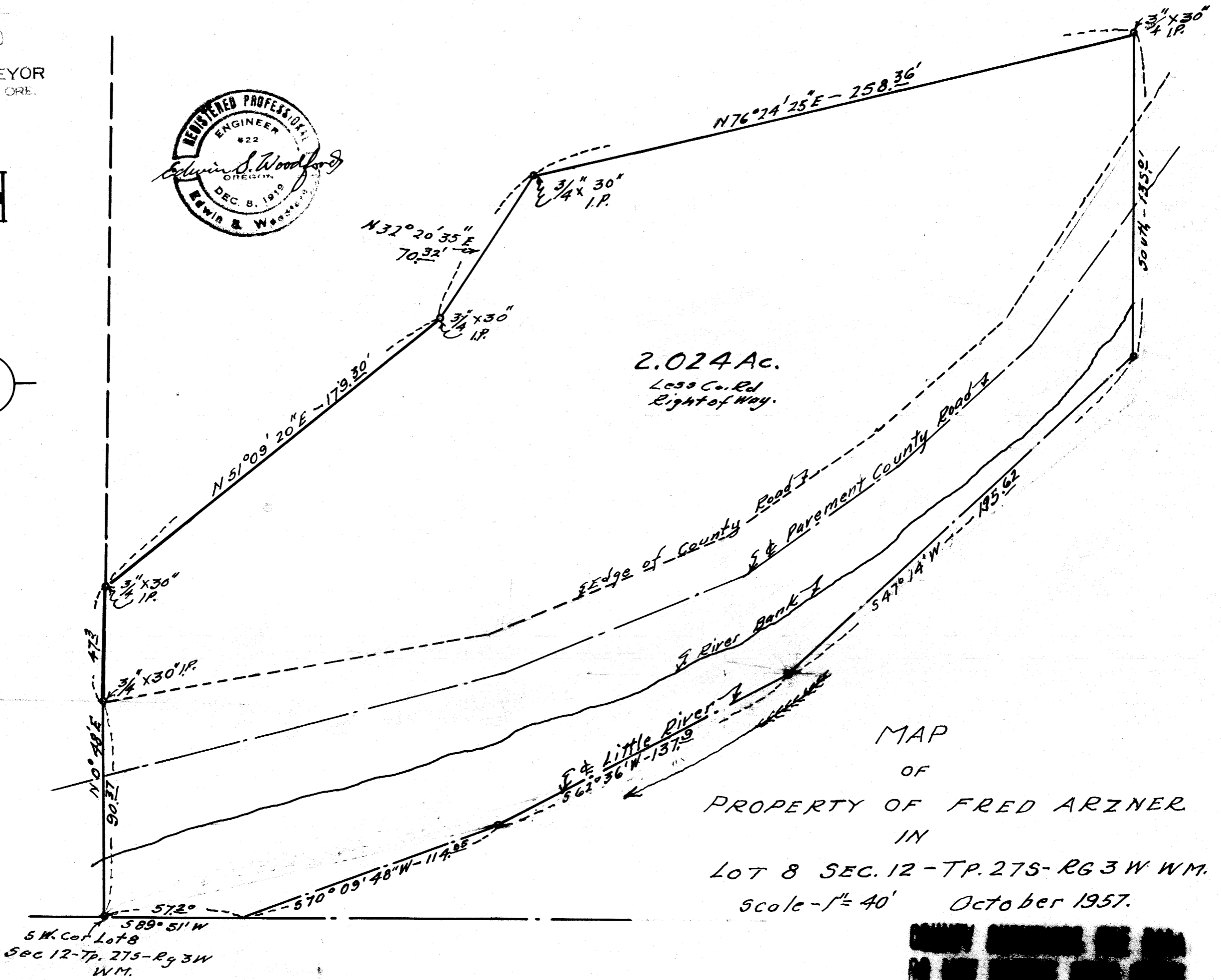
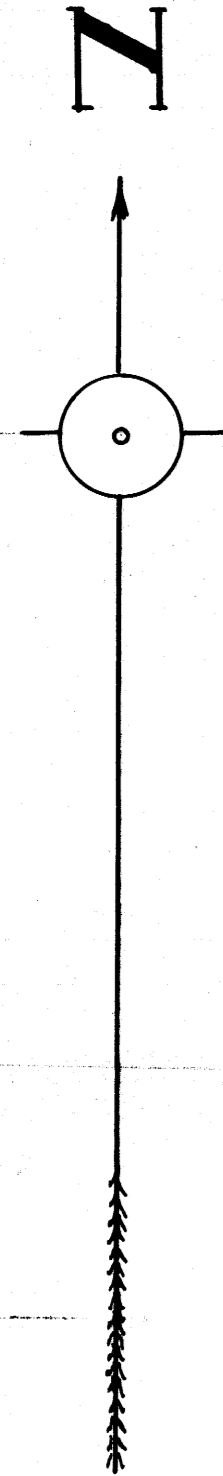


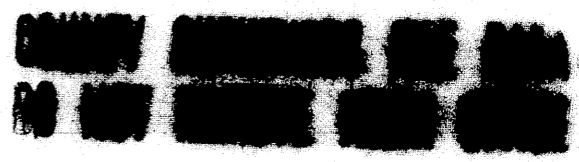
FILED L.L.
RECEIVED

DEC 1 1957

COUNTY SURVEYOR
DOUGLAS COUNTY, ORE.



MAP
OF
PROPERTY OF FRED ARZNER
IN
LOT 8 SEC. 12 - TP. 27S - RG 3W W.M.
Scale - 1" = 40' October 1957.



MAP FILE M19-T-80

M19-80