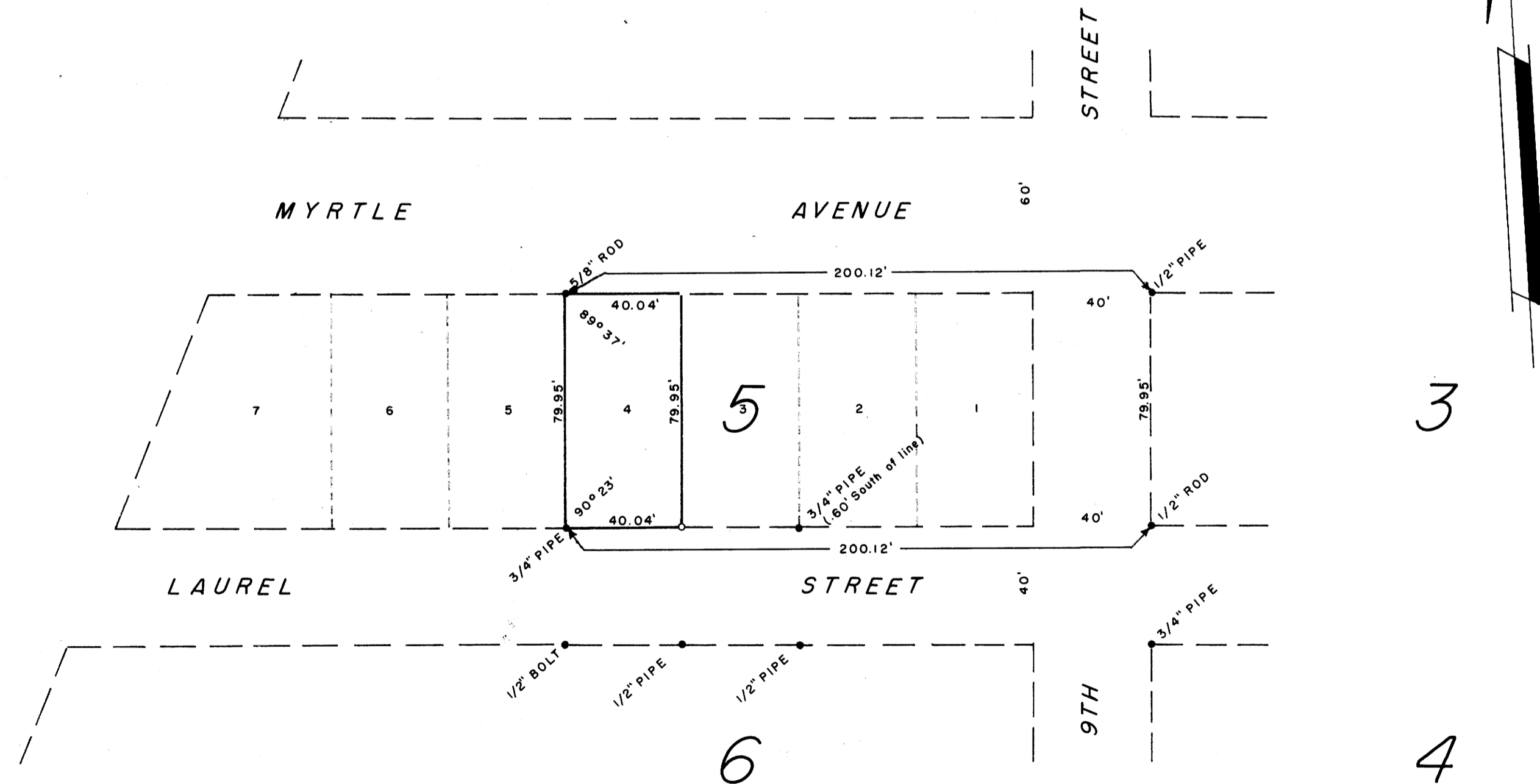
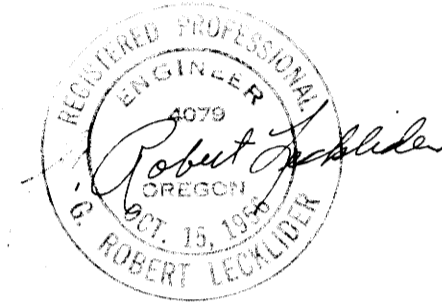


SURVEY TO ESTABLISH PROPERTY CORNERS LOT 4, BLOCK 5, RAINBOW ADDITION TO REEDSPORT, DOUGLAS COUNTY, OREGON

SURVEYED FOR: H. L. HANDY
SURVEYED BY: G. R. LECKLIDER-ENG'R.

SCALE: 1" = 40'
JUNE, 1960

• DENOTES MONUMENTS FOUND AS SHOWN
○ DENOTES STEEL TUBE WITH SURVEY CAP SET



FILED
RECEIVED
JUL 1 1960
COUNTY SURVEYOR
DOUGLAS COUNTY, OREG.

MAP FILE M/1978

M/19-8