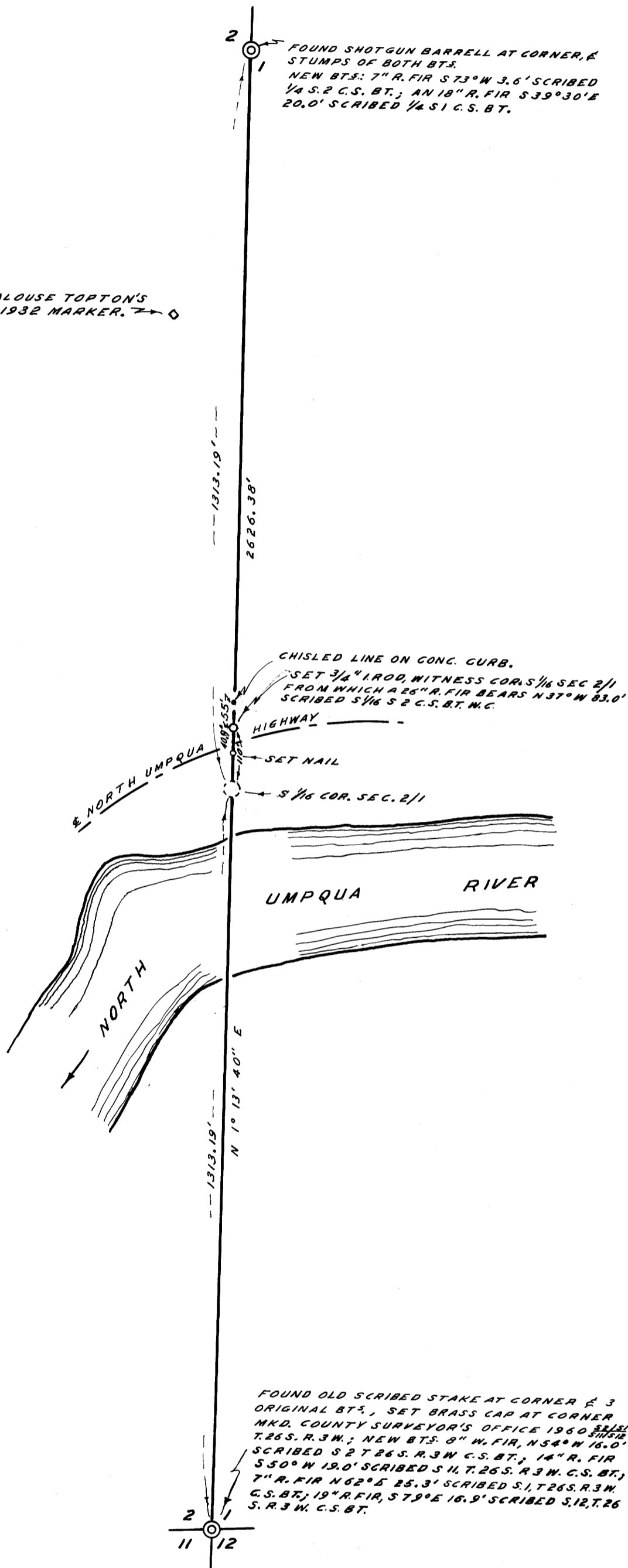


MACE PALOUSE TOPTONS
GRAVE, 1932 MARKER. → 0



NOTE: BEARINGS ARE TRUE, BASED ON A
SOLAR OBSERVATION TAKEN OCT. 25, 1960.

COUNTY SURVEYOR'S OFFICE
DOUGLAS COUNTY, OREGON

SURVEY TO SET 1/16 CORNER,
SECTION 1 & 2, T26S., R3W., W.M.

REGISTERED
OREGON
LAND SURVEYOR

James W. Byron

NOV. 6, 1953
JAMES W. BYRON
303

FRED M. DARBY COUNTY SURVEYOR
SURVEYED OCT. 24, 1960 BY
JAMES W. BYRON - DEPUTY SCALE 1" = 200'
SURVEYED FOR DOUGLAS COUNTY

COUNTY SURVEYORS FILE IN
DO NOT REMOVE FROM OFFICE