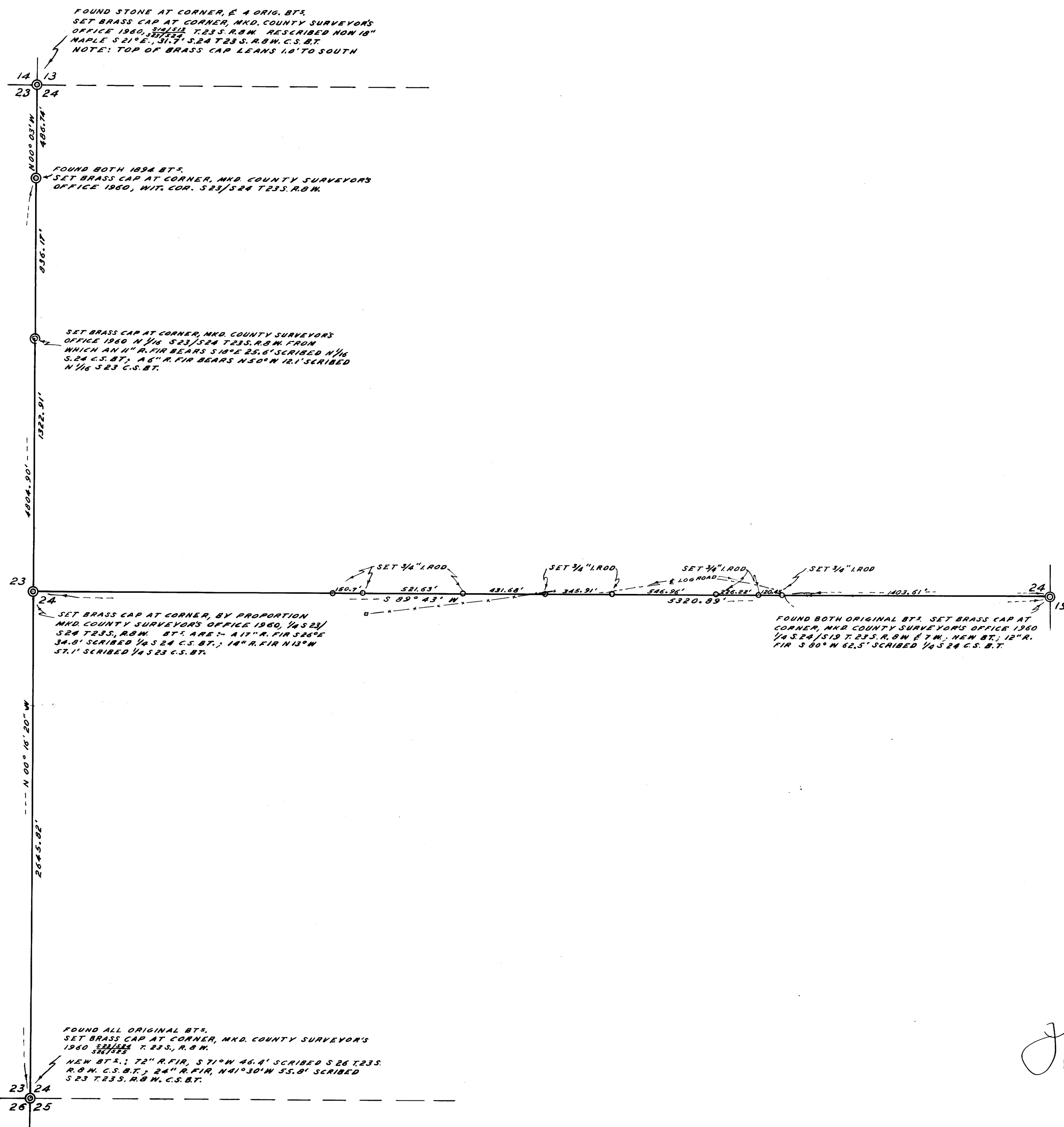


51-414
12/15/60



COUNTY SURVEYOR'S OFFICE
DOUGLAS COUNTY, OREGON

SURVEY TO ESTABLISH 1/4 SEC. LINE IN
SECTION 24, T.23S., R.8 W., W.M.

FRED M. DARBY COUNTY SURVEYOR
SURVEYED NOV. 15, 1960 BY
JAMES W. BYRON - DEPUTY SCALE 1" = 400'
SURVEYED FOR J. H. CANNON

REGISTERED
OREGON
LAND SURVEYOR
James W. Byron
NOV. 6, 1953
JAMES W. BYRON
303

COUNTY SURVEYORS FILE DATA
DO NOT REMOVE FROM OFFICE

51-414
12/15/60