

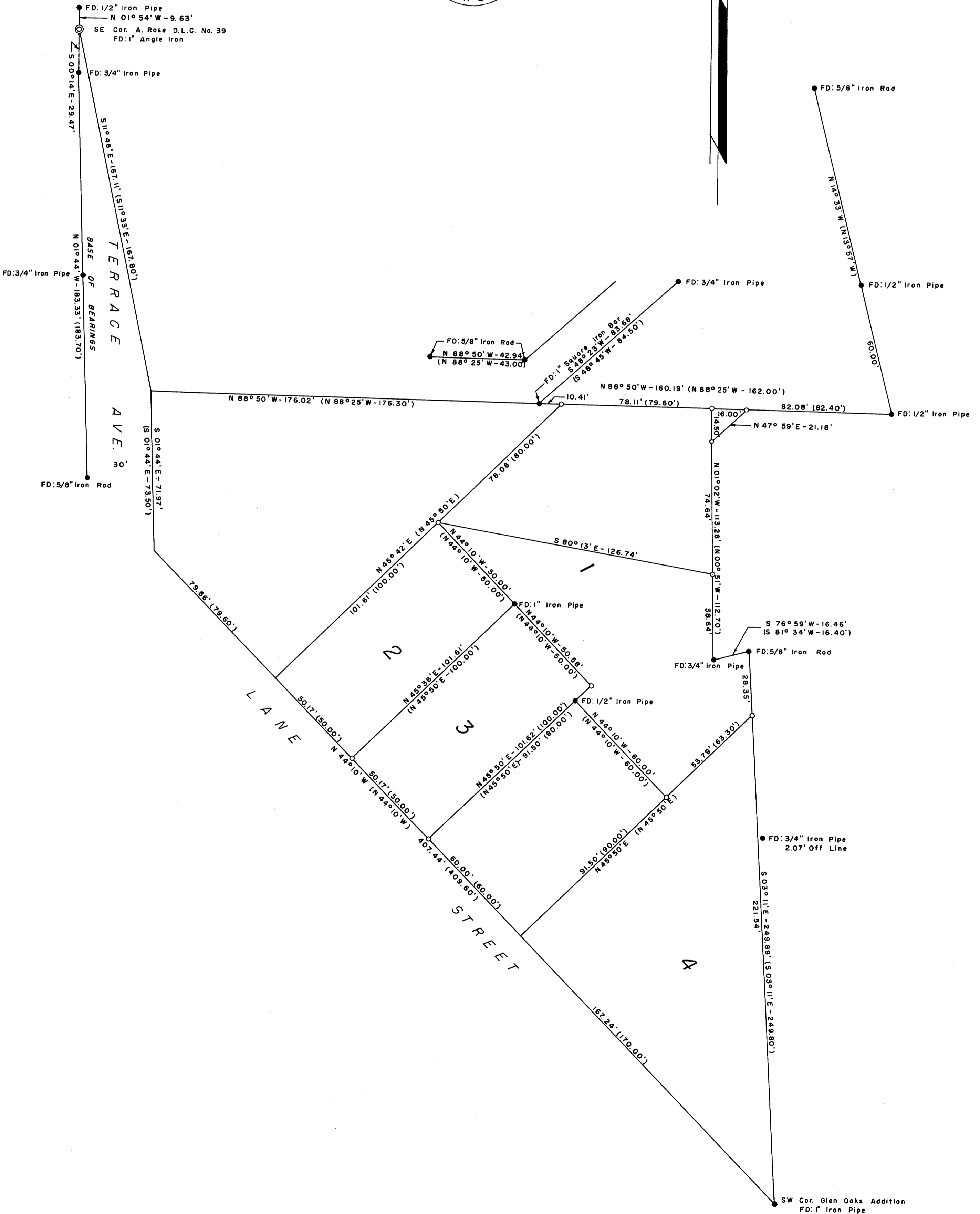
SURVEY TO

DO NOT REMOVE FROM OFFICE

SET PROPERTY CORNERS IN LOTS 1 & 3, WESCOTT ADD. TO THE CITY OF ROSEBURG IN SECTION 19, T. 27 S., R. 5 W., W.M. SURVEYED FOR: K. J. SPEEDIE & R. L. CARTER SURVEYED BY: G. ROBERT LECKLIDER - ENGINEER

OCTOBER, 1960 SCALE: 1" = 30'

NOTE: O Denotes 1/2" Iron Rod Set Parentheses Denote Record Measurement (Refer to C.S. File 7/48)



FILED RECEIVED 1960 OCT 19 COUNTY SURVEYOR DOUGLAS COUNTY, ORE.