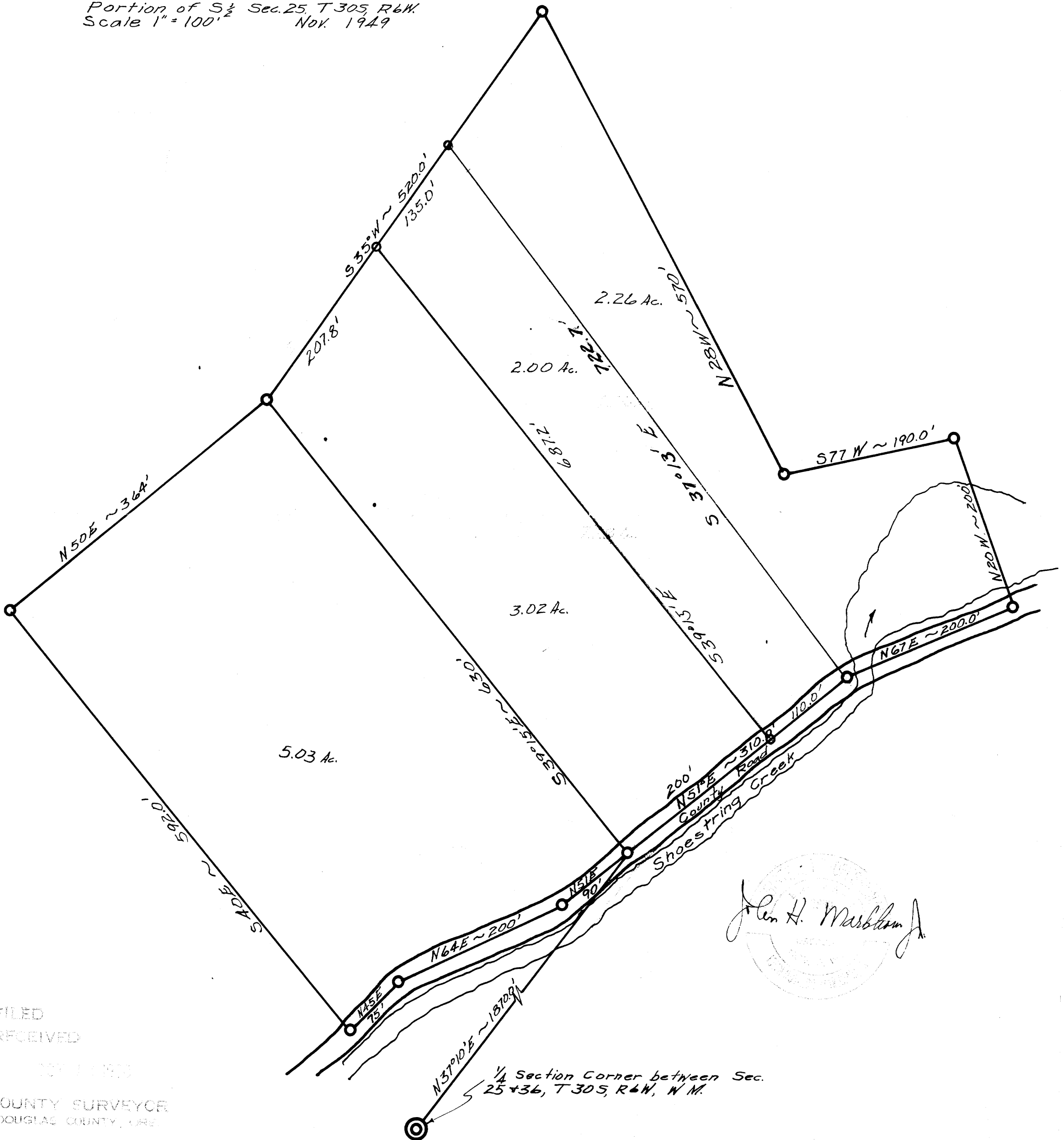


**COUNTY SURVEYORS, FILE DATA  
DO NOT REMOVE FROM OFFICE**

Prepared for  
**Carl M. Mack**

Portion of S $\frac{1}{2}$  Sec. 25, T 30S, R 6W.  
Scale 1" = 100'  
No. 1949



*John H. Marbleton*  
COUNTY SURVEYOR  
DOUGLAS COUNTY, ORE.

FILED  
RECEIVED

NOV 1 1950

COUNTY SURVEYOR  
DOUGLAS COUNTY, ORE.

$\frac{1}{4}$  Section Corner between Sec.  
25 + 36, T 30S, R 6W, W.M.