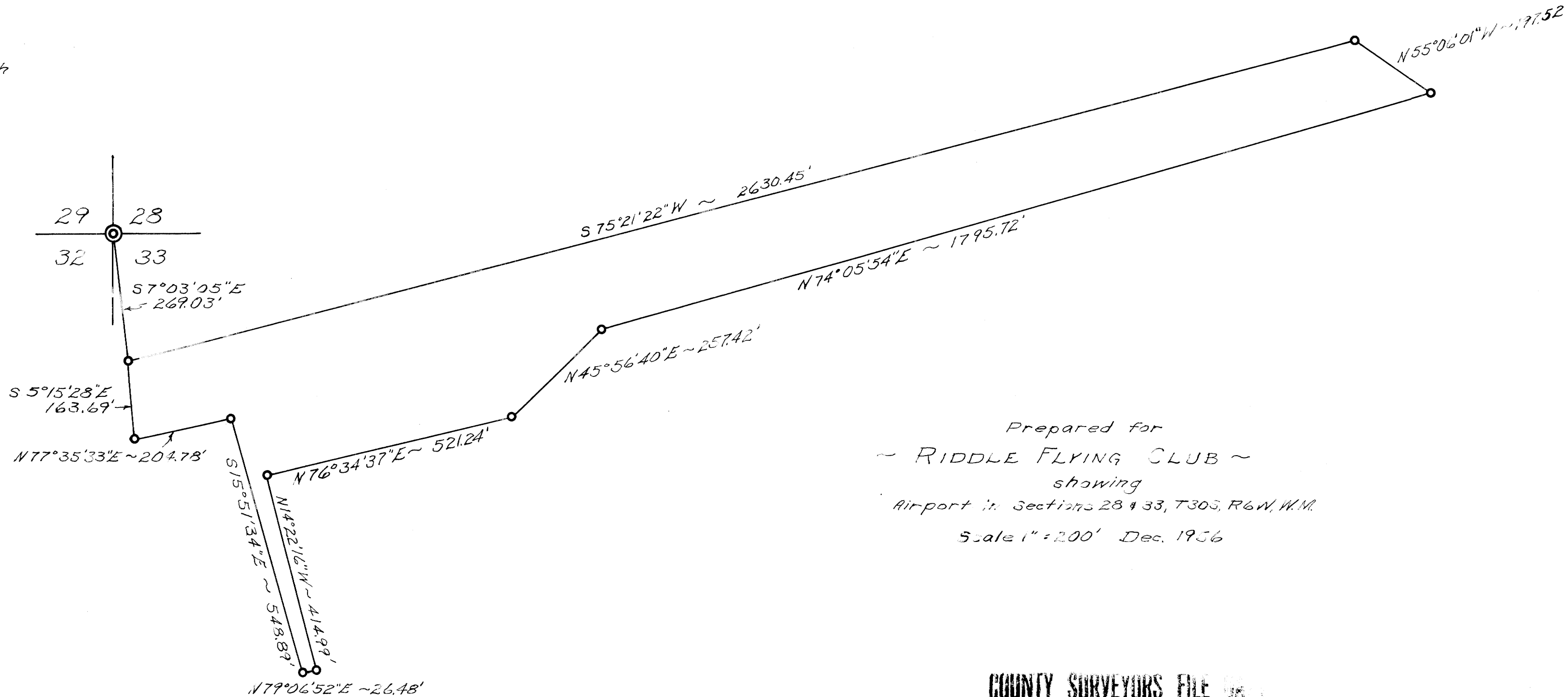


North

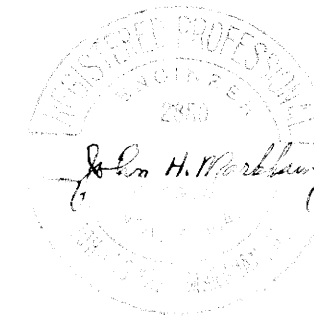


Prepared for
 ~ RIDDLER FLYING CLUB ~
 showing
 Airport in Sections 28 & 33, T30S, R6W, W.M.
 Scale 1" = 200' Dec. 1956

FILED
RECEIVED

001-13-83

COUNTY SURVEYOR
DOUGLAS COUNTY, MO.



COUNTY SURVEYORS FILE HERE
 DO NOT REMOVE FROM OFFICE

P. 19-64