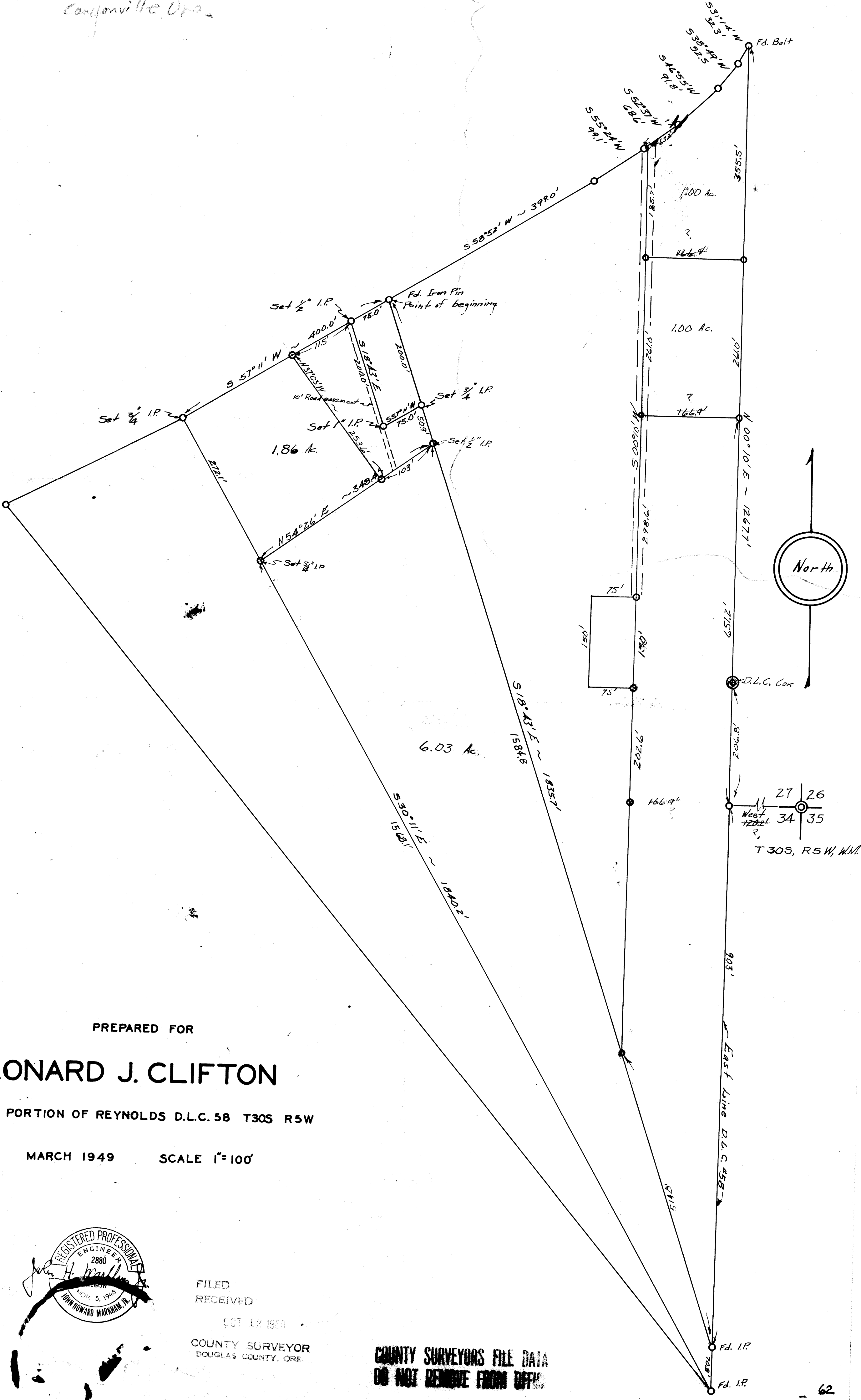


Gayle Habel 29-61 W
 Box 61
 Canyonville, Ore.



PREPARED FOR

LEONARD J. CLIFTON

PORTION OF REYNOLDS D.L.C. 58 T30S R5W

MARCH 1949

SCALE 1"=100'



FILED
 RECEIVED
 OCT 12 1950
 COUNTY SURVEYOR
 DOUGLAS COUNTY, ORE.

**COUNTY SURVEYORS FILE DATA
 DO NOT REMOVE FROM OFFICE**

