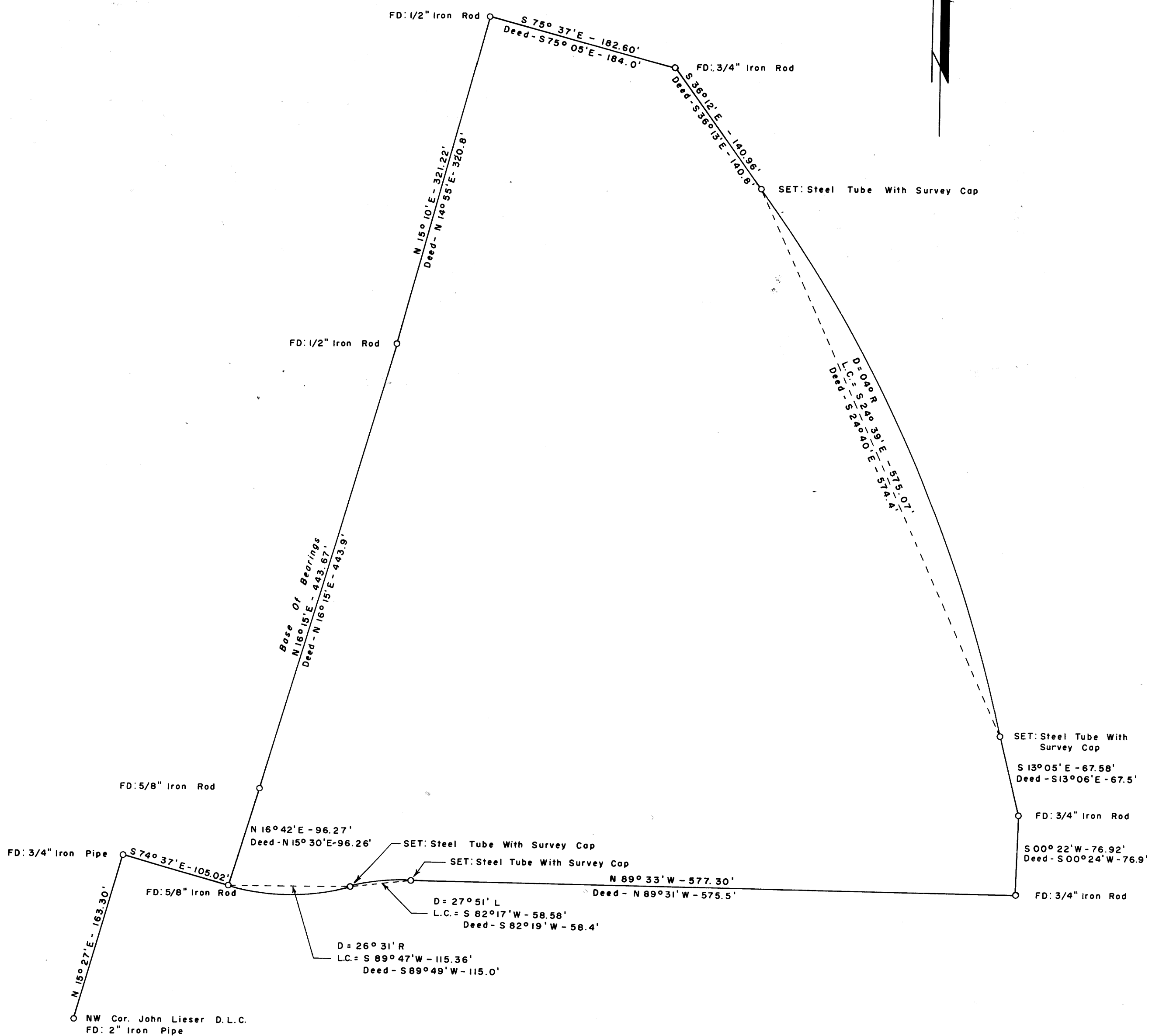
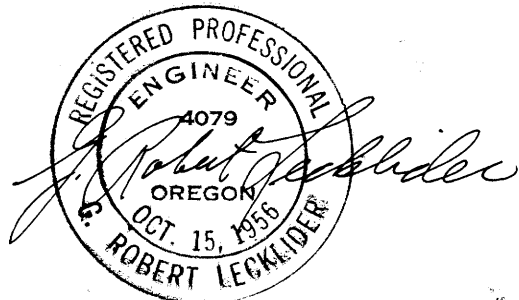


# METES AND BOUNDS SURVEY IN LOT I, WILES FRUIT TRACT, SECTION 14, T.27 S., R.6 W., W.M. SURVEYED FOR: SCHOOL DIST. NO. 4      SEPTEMBER, 1960 SURVEYED BY: G. R. LECKLIDER-ENGR.      SCALE: 1" = 80'



FILED *L.R.*  
RECEIVED

OCT 4 1960  
COUNTY SURVEYOR  
DOUGLAS COUNTY, ORE.