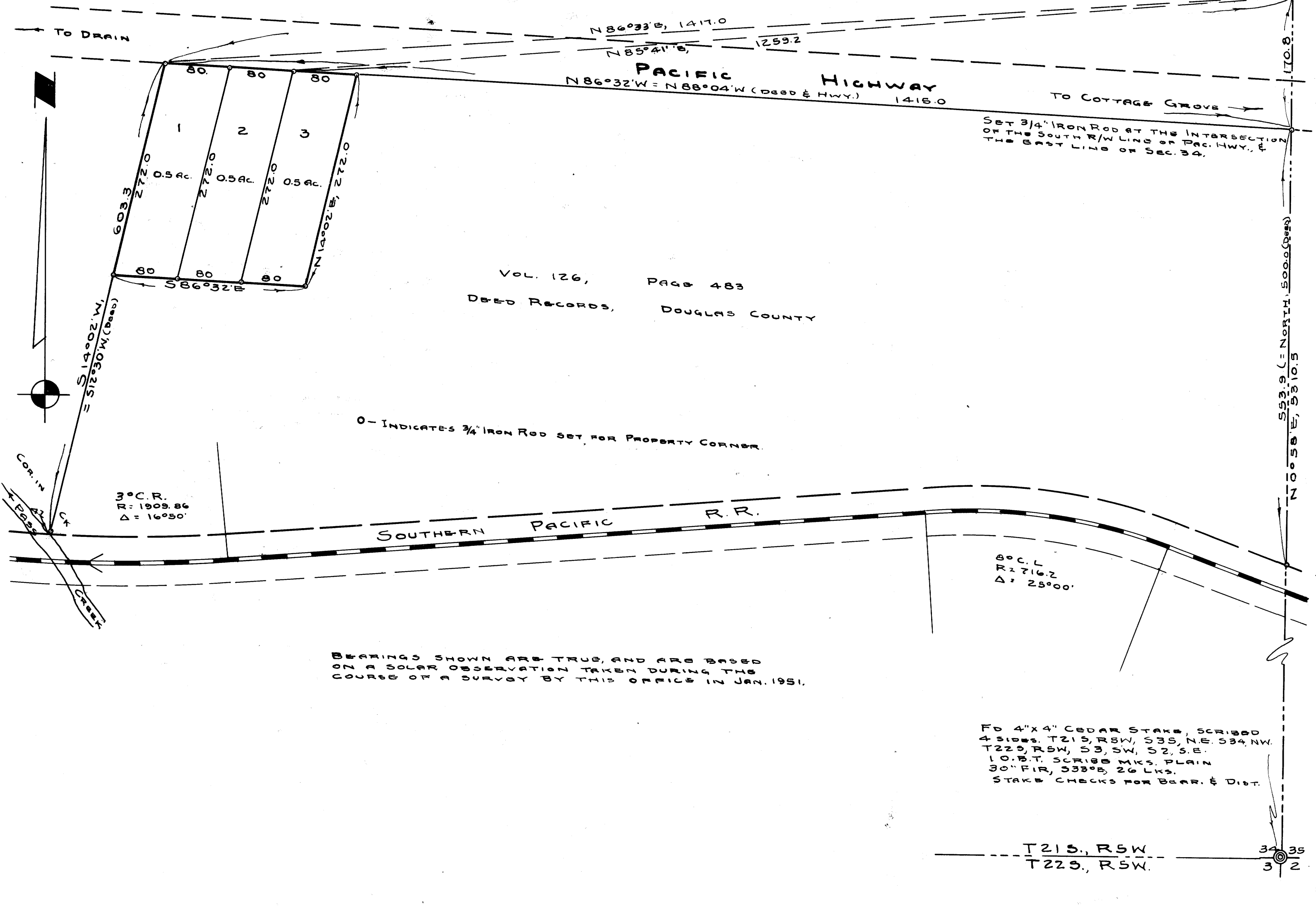


FOUND CEDAR STAKE MKD S-26-27
 34-35, 10.0 FT. DOWN N. 36" FIR, N23E, 24
 STAKE CHECKS FOR BEAR. & DIST.
 SET 3/4" IRON ROD, NEW B.T.S.
 24" MAPLE, N33 1/2° W, 32 FT. MKD S-27, T21S, R5W.
 16" MAPLE, S71 1/2° E, 12 FT. MKD, S35, T21S, R5W.
 C.S.B.T.

1/4 COR, SECS. 34 & 35, SET BY PROPERT.
 MEAS. SET 1" IRON PIPE WITH BRASS CAP.
 MKD 1/4 S. 34 & 35, T21S, R5W, CO. SURV. OFF.
 BLAZE & SCRIBE B.T.S.
 34" CEDAR, S89° W, 100 FT. MKD 1/4 S 34, C.S.B.T.
 18" FIR S13° E, 120.5 FT. MKD 1/4 S 35, C.S.B.T.



VOL. 126, PAGE 483
 DEED RECORDS, DOUGLAS COUNTY

O - INDICATES 3/4" IRON ROD SET FOR PROPERTY CORNER.

BEARINGS SHOWN ARE TRUE, AND ARE BASED
 ON A SOLID OBSERVATION TAKEN DURING THE
 COURSE OF A SURVEY BY THIS OFFICE IN JAN. 1951.

FO 4"x4" CEDAR STAKE, SCRIBED
 4 SIDES, T21S, R5W, S35, N.E. S34, NW.
 T22S, R5W, S3, SW, S2, S.E.
 10.0 FT. SCRIBED MKS. PLAIN
 30" FIR, S33° E, 26 LKS.
 STAKE CHECKS FOR BEAR. & DIST.

T21S, R5W
 T22S, R5W.
 34-35
 3-2

**COUNTY SURVEYOR'S OFFICE
 DOUGLAS COUNTY OREGON
 SURVEY FOR DEED DESCRIPTIONS
 SECTION 34, T21S, R5W, W.M.**



COUNTY SURVEYORS WILL RETURN
 DO NOT REMOVE FROM OFFICE

BEN B. IRVING, REG. P.E., COUNTY SURVEYOR
 SURVEYED & PLATTED, MARCH & APRIL, 1951
 BY: A.R. EVANS, REG. P.E., DEP. COUNTY SURVEYOR
 SCALE 1" = 100'