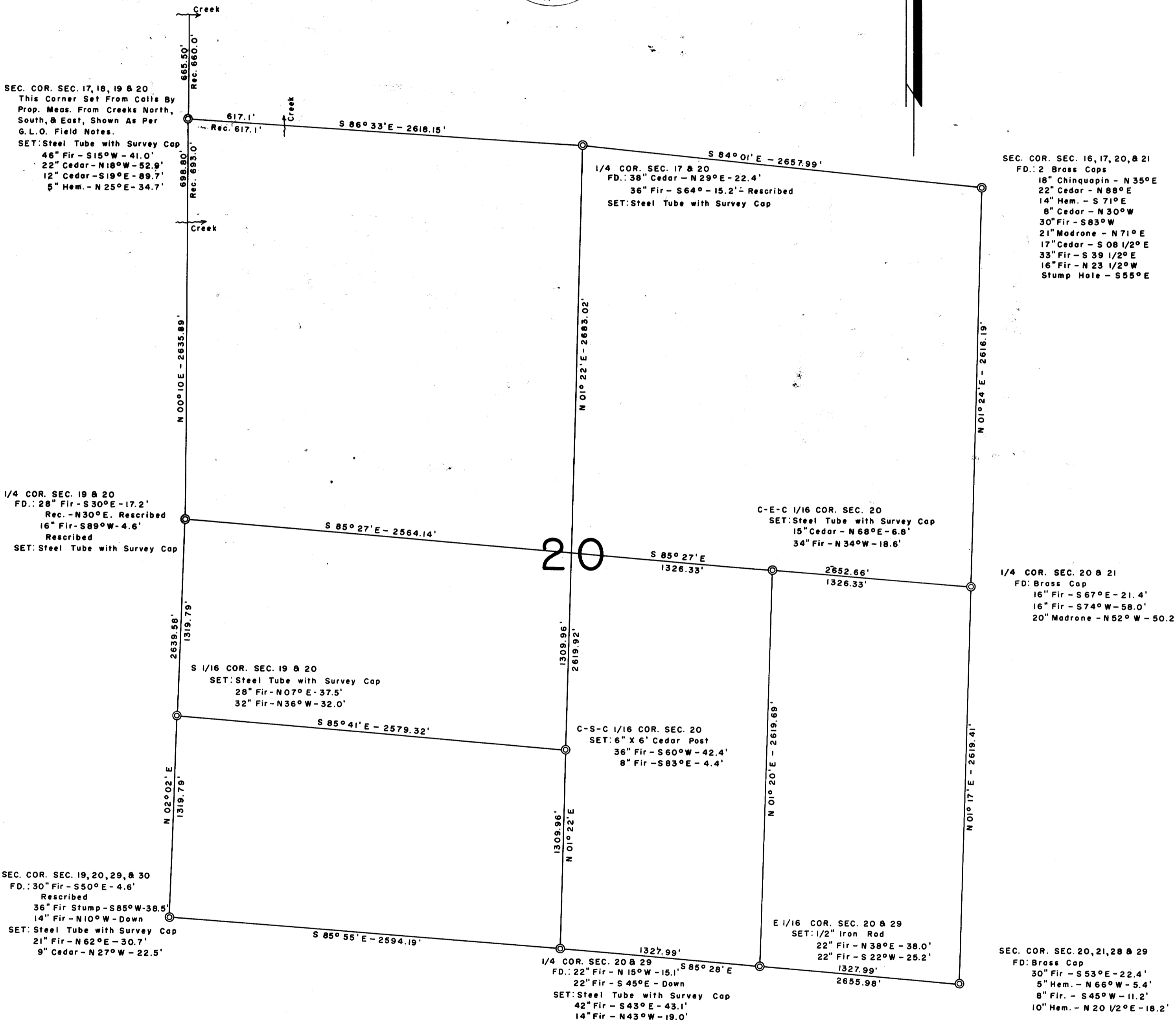


COUNTY SURVEYORS FILE DATA
DO NOT REMOVE FROM OFFICE

SURVEY OF SECTION 20, T. 27 S., R. 3 W., W. M. SURVEYED FOR: WILBUR LBR. CO., EVANS PRODUCTS CO, AND U. S. PLYWOOD CORP. AUGUST, 1960 SURVEYED BY: G. R. LECKLIDER - ENGR. SCALE: 1" = 500'

NOTE: ALL BEARINGS BASED ON SOLAR OBSERVATION.



FILED
RECEIVED
SEP 1 1960
COUNTY SURVEYOR
DOUGLAS COUNTY, ORE.