

COUNTY SURVEYORS FILE DATA  
DO NOT REMOVE FROM OFFICE

FILED  
RECEIVED

JUN 25 1960

COUNTY SURVEYOR  
DOUGLAS COUNTY, OREG.

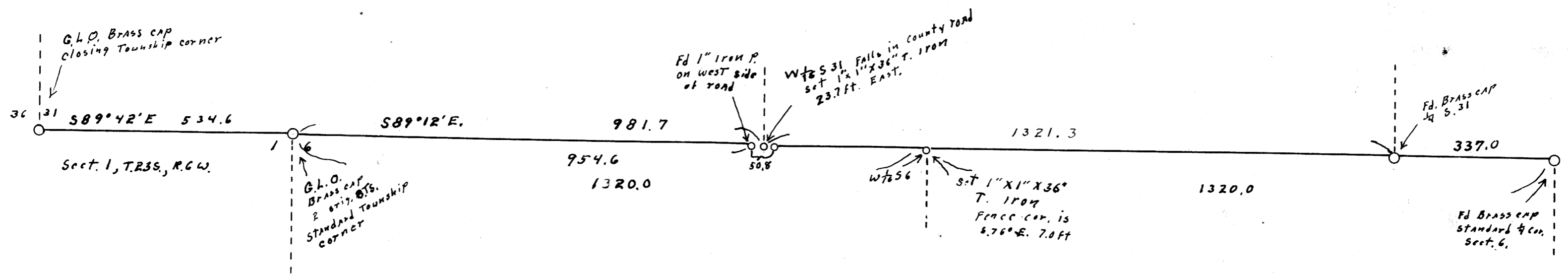
SECT. 31, T.22S. R.5W. W.M.

Scale 1" = 200 ft

MAY 1960

Frank O'Brien

REGISTERED  
OREGON  
LAND SURVEYOR  
*Wilford N. Haines*  
MAY 7 1945  
WILFORD N. HAINES  
239



M 19-5

MAP FILE M 19 7 5