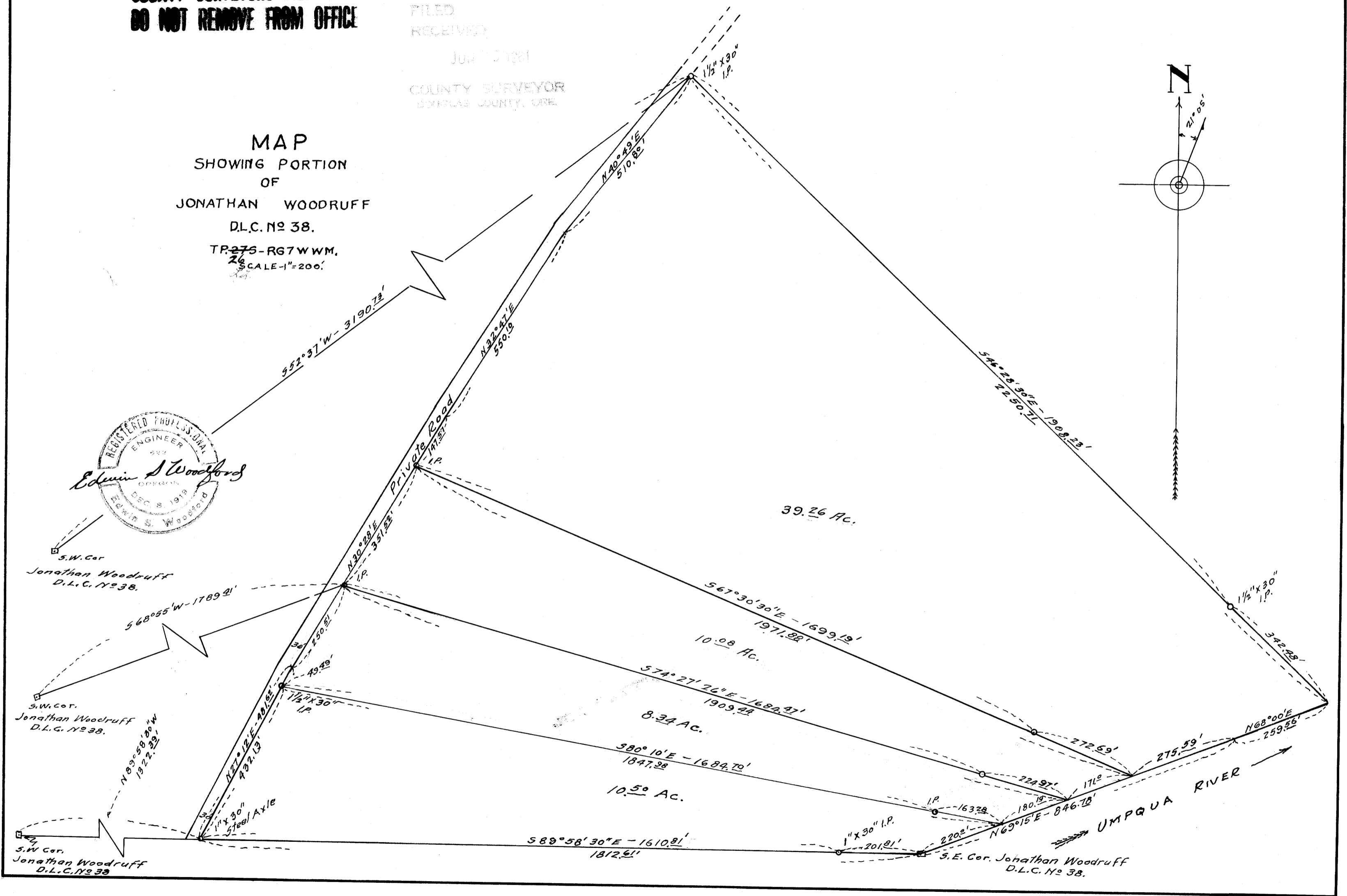
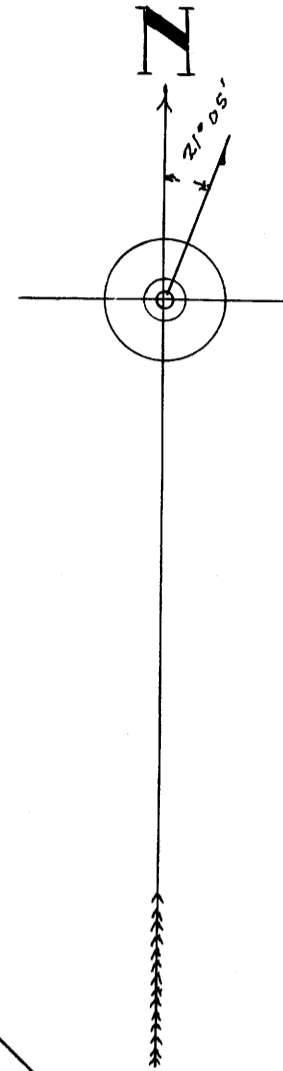
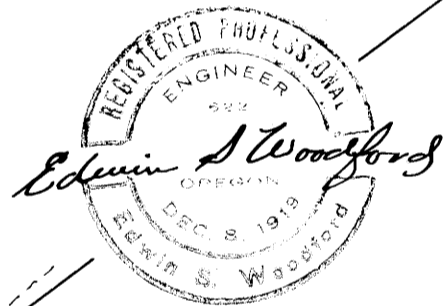


COUNTY SURVEYORS FILE DATA  
DO NOT REMOVE FROM OFFICE

FILED  
RECEIVED  
JUN 10 1981  
COUNTY SURVEYOR  
DORRIS COUNTY, ORE.

MAP  
SHOWING PORTION  
OF  
JONATHAN WOODRUFF  
D.L.C. No 38.  
TR. 27S - R67 W WM.  
SCALE - 1" = 200'



M 19-4A

C.S. FILE 40/459

Map File M 19-4A

C.S.  
M 19-4A