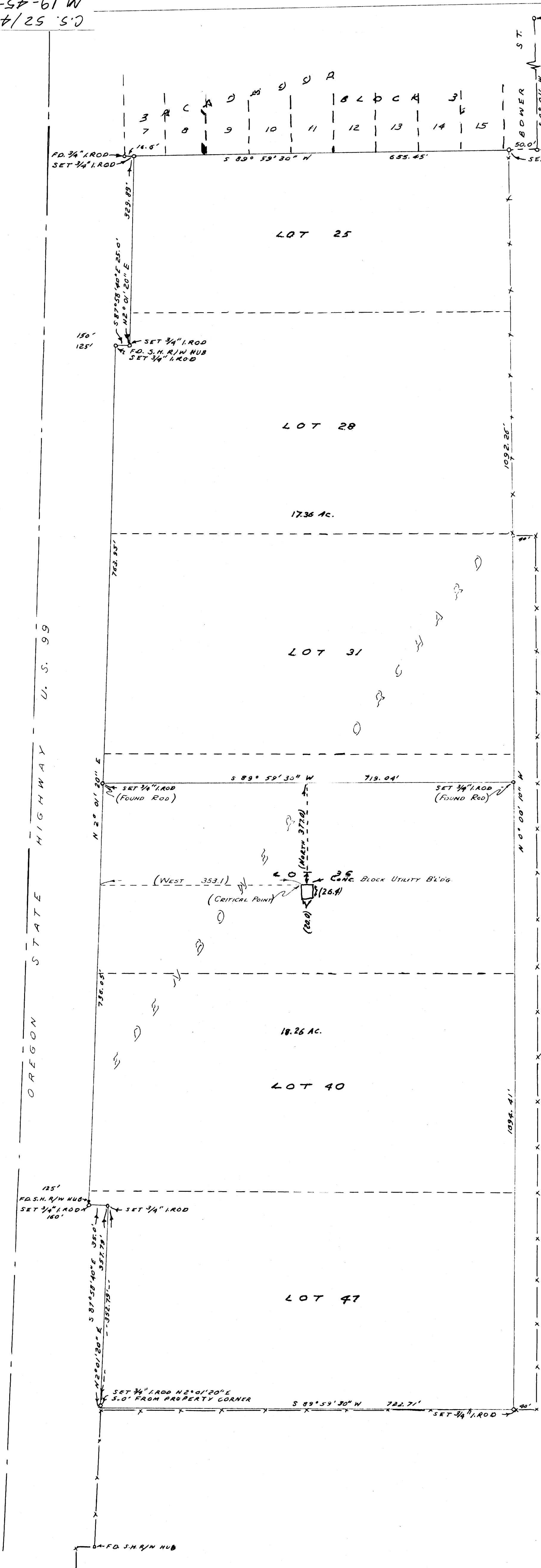


C.S. 52/44
M 19-45-A

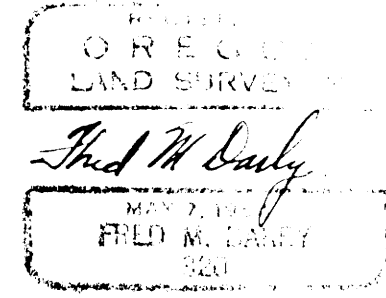


NOTE: BEARINGS BASED ON
S 89° 59' 30\"/>

NOTE: DATA SHOWN THIS () REFERS TO RESULTS
FOUND ON SURVEY MADE AUGUST 7, 1961.

CERTIFICATION

I, FRED M. DARBY, REGISTERED PROFESSIONAL LAND SURVEYOR
No. 320 OF ORE., DO HEREBY CERTIFY THAT THE IMPROVEMENTS AS
SHOWN HEREON, ARE WHOLLY WITHIN THE BOUNDARY OF THE PARCEL
OF LAND DEPICTED, ON THIS AUG. 7, 1961.



COUNTY SURVEYOR'S OFFICE
DOUGLAS COUNTY, OREGON

SURVEY FOR DEED DESCRIPTION,
EDENBOWER ORCHARD TRACTS.

FRED M. DARBY COUNTY SURVEYOR
SURVEYED AUG. 22, 1960 BY
JAMES W. BYRON - DEPUTY SCALE 1" = 100'
SURVEYED FOR DON HOUSLEY

**COUNTY SURVEYORS FILE DATA
DO NOT REMOVE FROM OFFICE**

James W. Byron