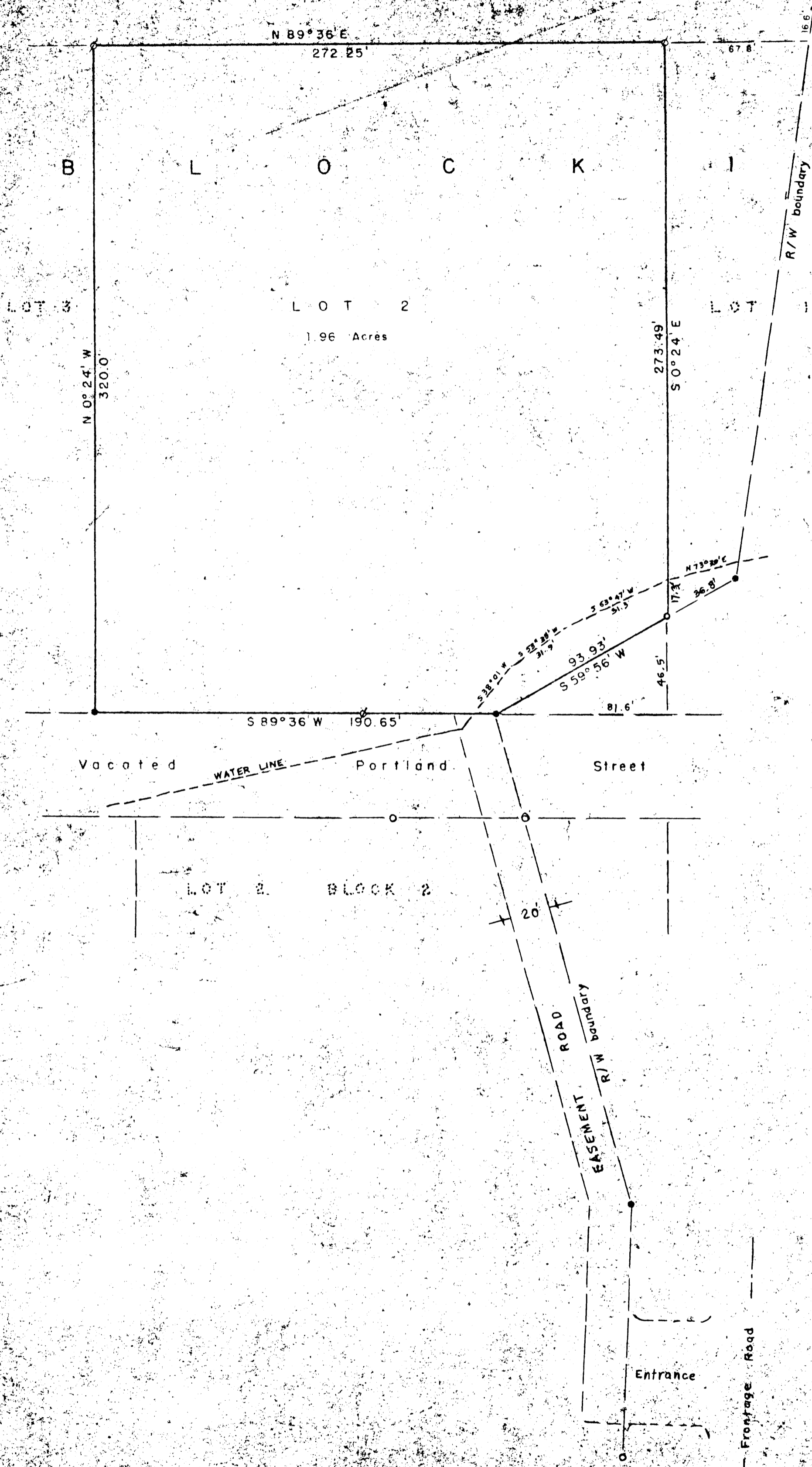


47-61 W



- = IRON ROD FOUND
- ⊕ = 3/4" x 30" ROD SET
- = 1/2" x 24" ROD SET

THIS COPY MADE FROM  
 A XEROX 2510  
 DATE 7-13-89



PLAT OF  
 PART OF LOT 2, BLOCK 1,  
 UMPQUA PARK PLAT "D"  
 IN SEC 25-1265-R6W W.M.  
 DOUGLAS CO, ORE  
 SEPTEMBER 1958 SCALE: 1" = 40'

FILED  
 RECEIVED  
 AUG 23 1960  
 COUNTY SURVEYOR  
 DOUGLAS COUNTY, ORE

COUNTY SURVEYORS FILE  
 DO NOT REMOVE FROM OFFICE

M 19-44