



**G. ROBERT LECKLIDER**

ENGINEER

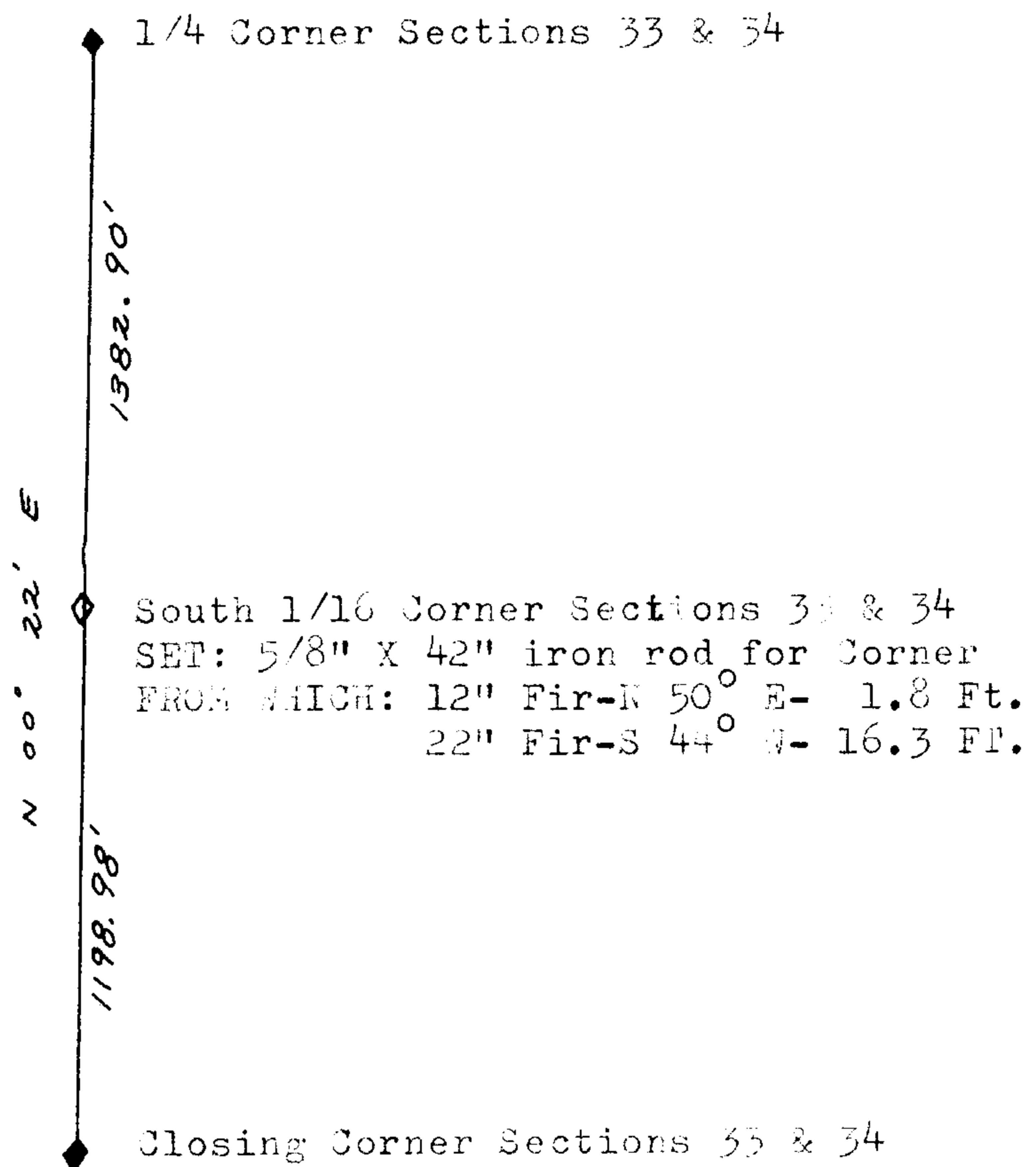
P. O. BOX 368

PHONE ORCHARD 3-3302

ROSEBURG, OREGON

SOUTH 1/16 CORNER SECTIONS 33 & 34  
TO TSHIP 25 SOUTH, RANGE 2 WEST, N.M.

This corner was set a proportionate distance between the  
A corner of sections 33 & 34 and the closing corner to sections  
33 & 34 from control run by me in August, 1960 in which I sub-  
divided section 34 for Evans Products Company and said survey  
filed in the Office of the County Surveyor in C.S. File No.  
M19-40.



FILED  
RECEIVED *L.L.*  
JUL 15 1960  
COUNTY SURVEYOR  
DOUGLAS COUNTY, ORE.



51/206