

COUNTY SURVEYORS FILE DATA
DO NOT REMOVE FROM OFFICE

SECT 33, T23S., R4W W.M.

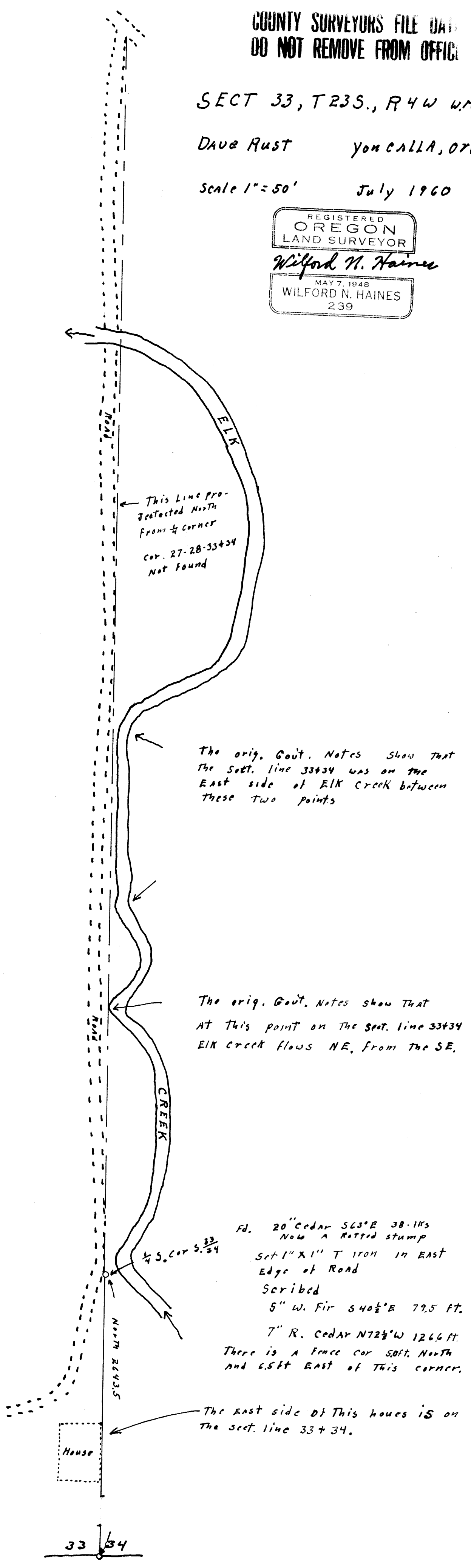
DAVE RUST you CALLA, OTC

Scale 1" = 50' July 1960

REGISTERED
OREGON
LAND SURVEYOR

Wilford N. Haines

MAY 7, 1948
WILFORD N. HAINES
239



This Line pro-
jected North
from 1/4 corner
Cor. 27-28-33+34
Not Found

The orig. Govt. Notes show that
the sett. line 33+34 was on the
East side of Elk Creek between
these two points

The orig. Govt. Notes show that
at this point on the sett. line 33+34
Elk Creek flows NE, from the SE.

Fd. 20" Cedar S63°E 38.115
Now a rotted stump
Set 1" X 1" T 17011 in East
Edge of Road
Scribed
5" W. Fir S40 1/2°E 79.5 FT.
7" R. Cedar N72 1/2°W 126.6 FT.
There is a Fence cor 50ft. North
and 6.5ft East of this corner.

The East side of this house is on
the sett. line 33 + 34.

FILED *J.P.*
RECEIVED

AUG 4 1960

COUNTY SURVEYOR
DOUGLAS COUNTY, ORE.

33 | 34