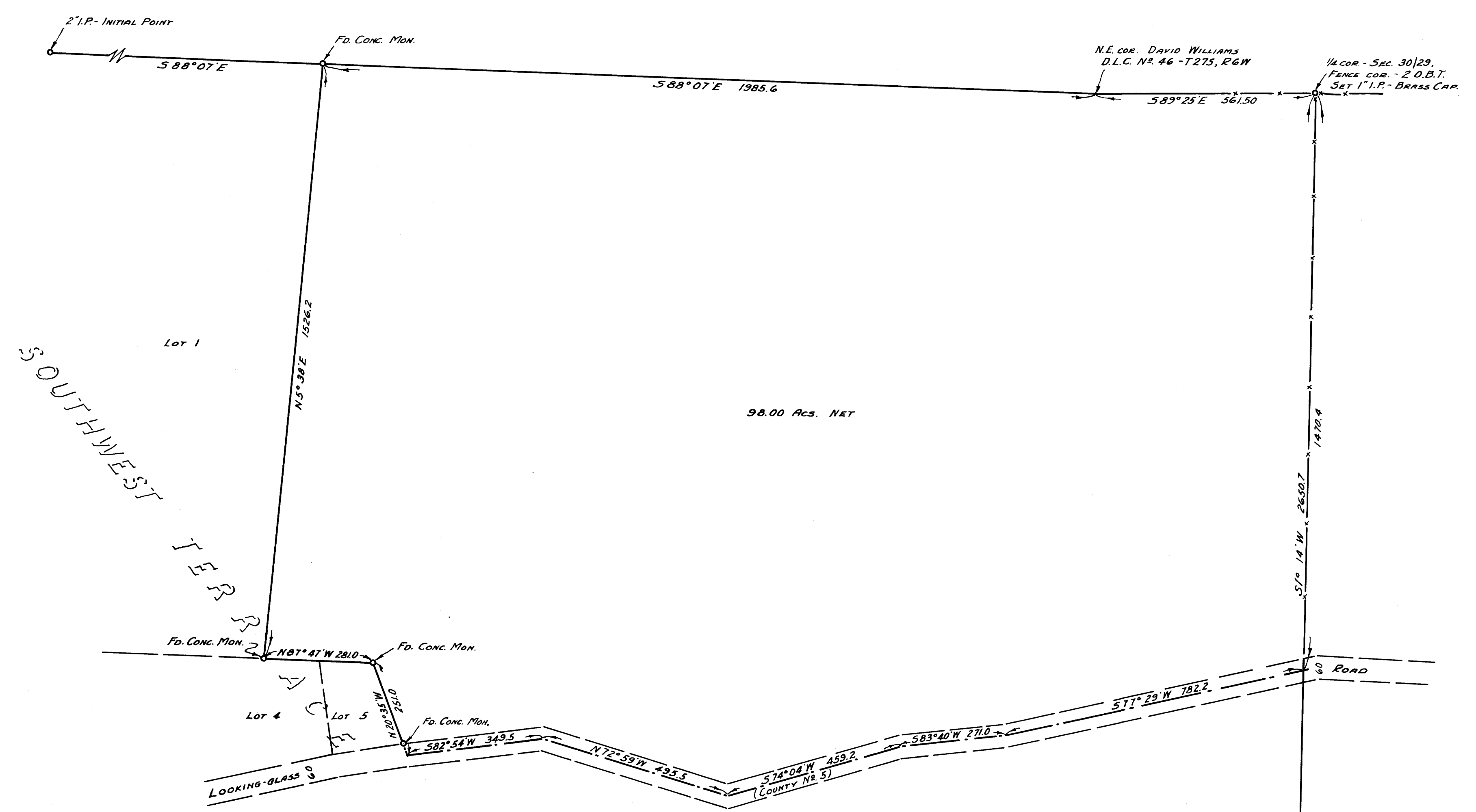


55-5-65-19-99  
M19-36

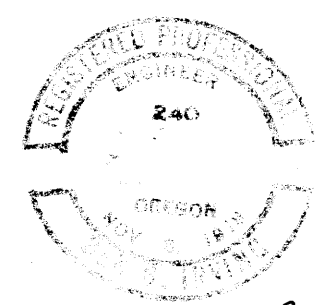


COUNTY SURVEYOR'S OFFICE  
DOUGLAS COUNTY, OREGON

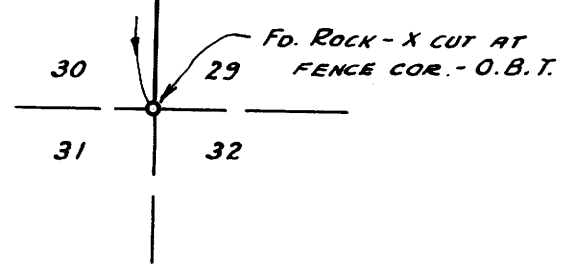
SURVEY FOR DEED DESCRIPTION.  
SECTION 30, T27S, R6W, W.M.

BEN. B. IRVING  
SURVEYED JULY 16, 1952

COUNTY SURVEYOR  
SCALE 1" = 200'  
COUNTY SURVEYORS FILE  
DO NOT REMOVE FROM OFFICE



*By Fred W. Dady*



55-5-65-19-99  
M19-36