

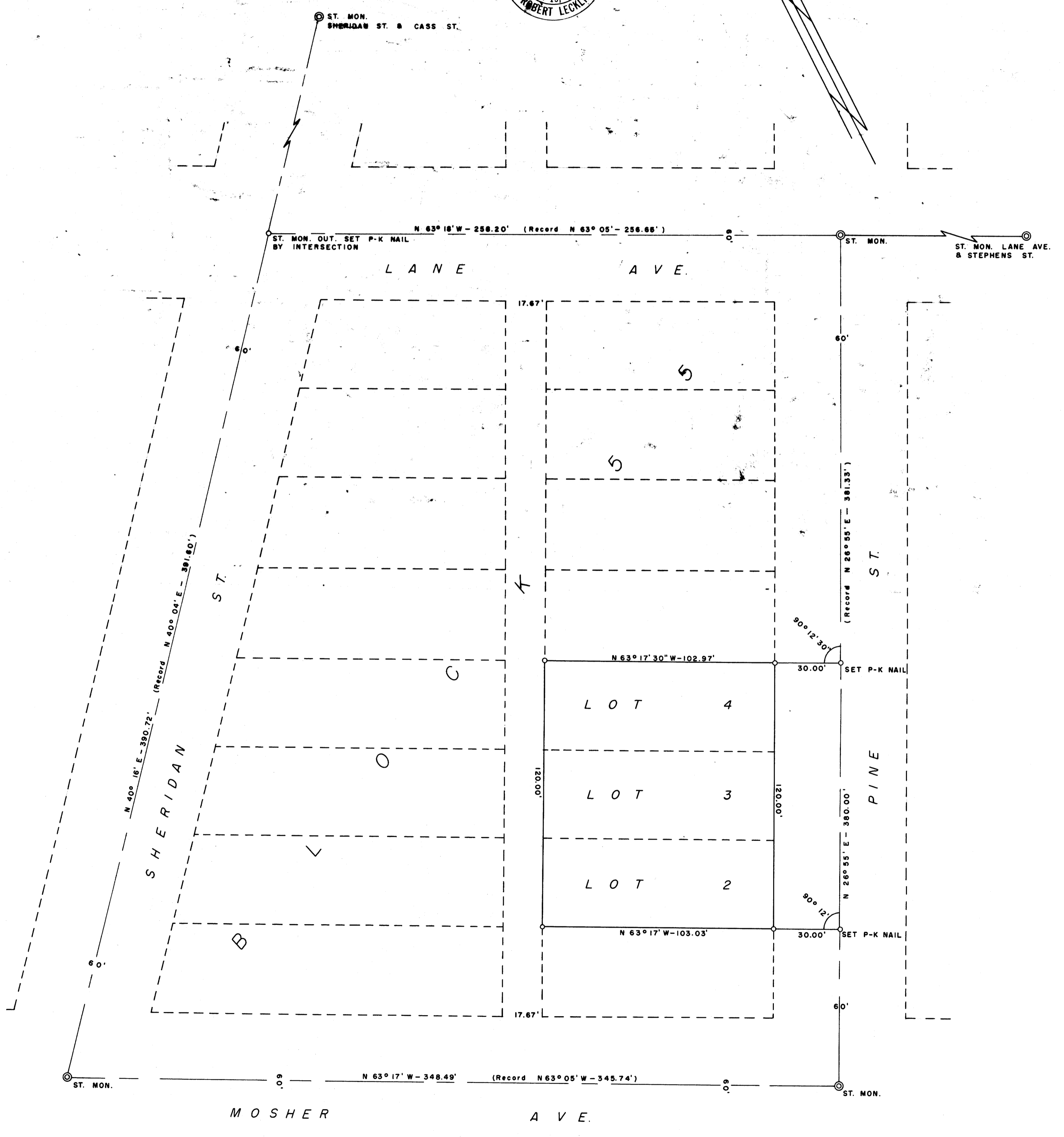
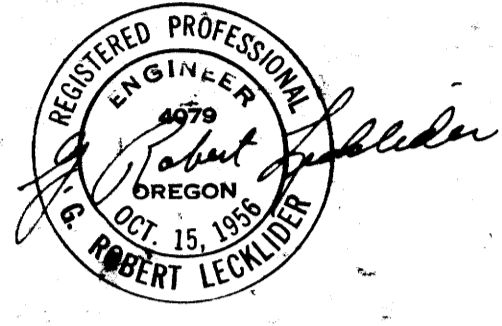
COUNTY SURVEYORS FILE DATA  
DO NOT REMOVE FROM OFFICE

# SURVEY TO ESTABLISH PROPERTY CORNERS OF LOTS 2,3 & 4, BLOCK 55, RAILROAD ADDITION TO THE CITY OF ROSEBURG, DOUGLAS COUNTY, ORE.

SURVEYED FOR: OREGON STATE DEPT. OF EMPLOYMENT  
SURVEYED BY: G.R. LECKLIDER - ENGINEER

JULY, 1960  
SCALE: 1" = 30'

○ DENOTES STEEL TUBE WITH SURVEY CAP SET UNLESS OTHERWISE NOTED.



FILED  
RECEIVED

AUG 1 1960

COUNTY SURVEYOR  
DOUGLAS COUNTY, ORE.