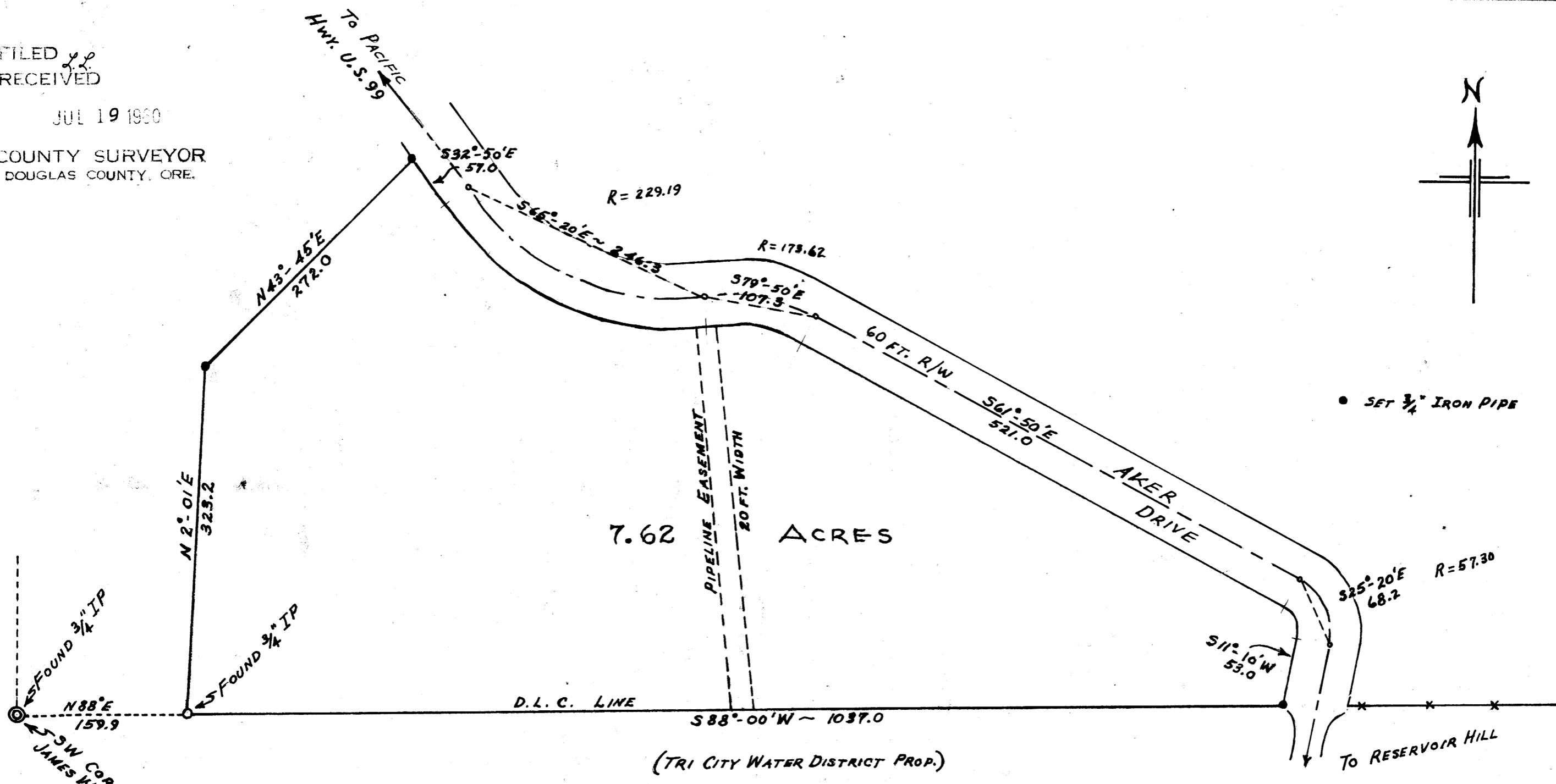


FILED *y.p.*  
RECEIVED

JUL 19 1960

COUNTY SURVEYOR  
DOUGLAS COUNTY, ORE.

M 19-21



FIELD SURVEY & PLAT PREPARED FOR

**GEORGE AKER, SR.**  
MYRTLE CREEK, OREGON

JAMES WEAVER D.L.C. 37 SEC. 5 T30S R5W W.M. DOUGLAS COUNTY, ORE.

SCALE: 1 IN. = 100 FT.

MARTIN ENGINEERING SERVICE ~ MYRTLE CREEK, OREGON

COUNTY SURVEYORS FILE DATA  
DO NOT REMOVE FROM OFFICE



JUNE 1960

MAP FILE M 19-21