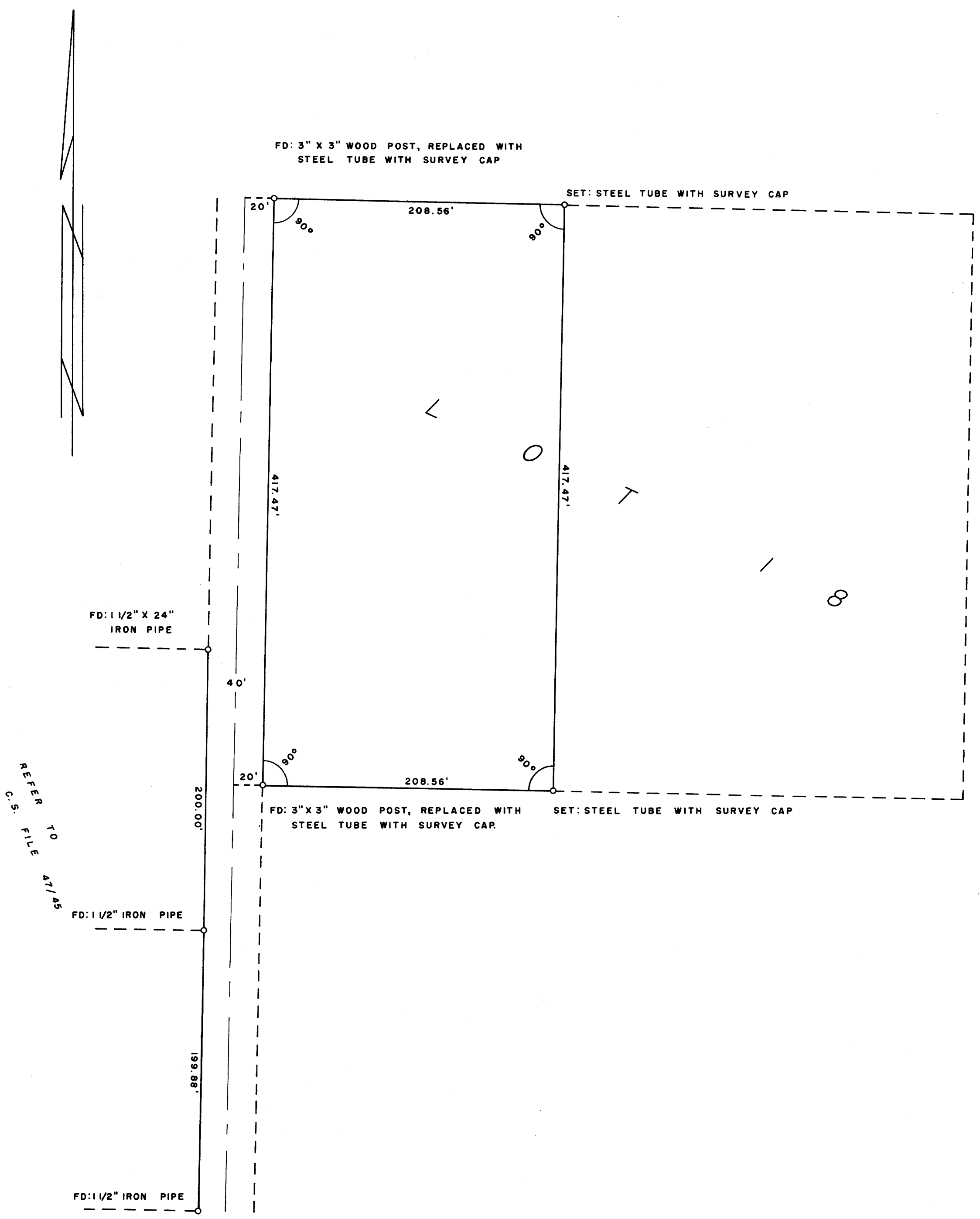
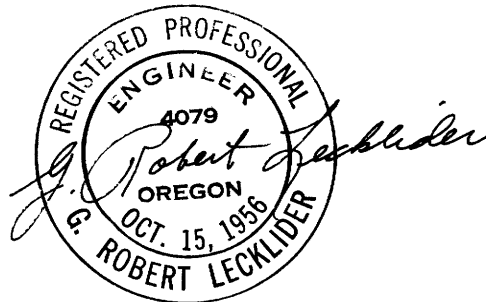


SURVEY OF A PORTION OF LOT 18, GREEN VALLEY ORCHARD TRACTS, IN SECTION 2, T. 28 S., R. 6 W., W.M.

SURVEYED FOR: B. N. GLANVILLE
SURVEYED BY: G. R. LECKLIDER - ENGINEER

JULY, 1960
SCALE: 1" = 60'



FILED
RECEIVED

JUL 11 1960

COUNTY SURVEYOR
DOUGLAS COUNTY, ORE.