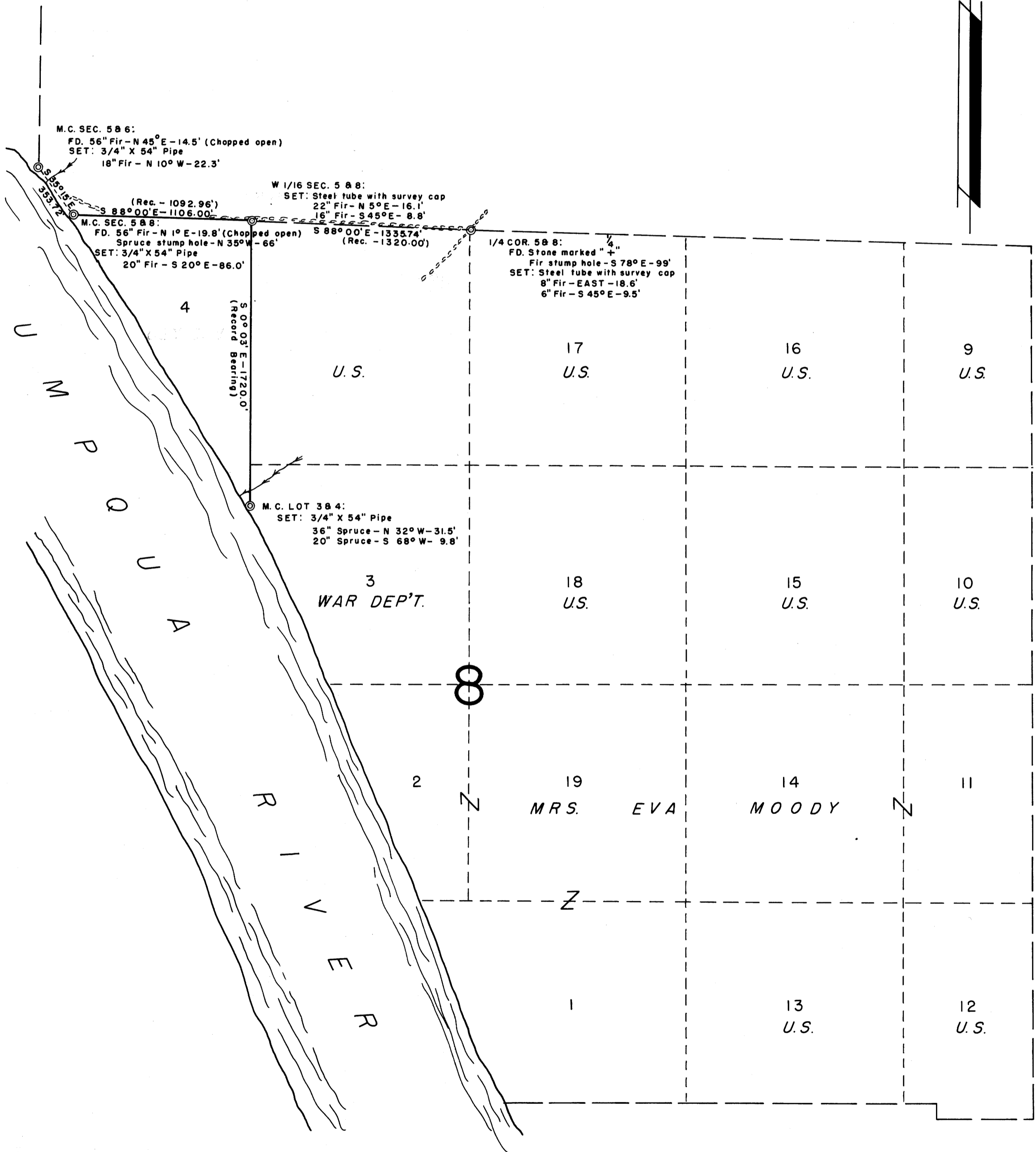
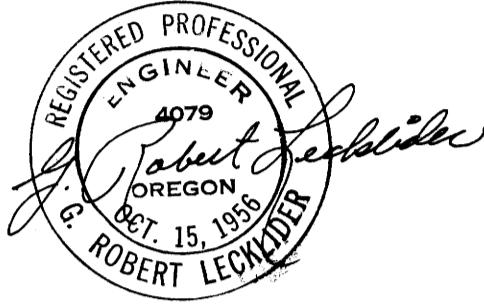


COUNTY SURVEYORS FILE OFFICE
DO NOT REMOVE FROM OFFICE

SURVEY OF LOT 4, SECTION 8, T 22 S, R 10 W, W.M.

SURVEYED FOR: GENERAL CONSTRUCTION CO. JUNE, 1960
SURVEYED BY: G. R. LECKLIDER-ENGINEER SCALE: 1" = 50'



NOTE: ALL BEARINGS BASED ON SOLAR OBSERVATION.
NOTE: W 1/16 CORNER OF SECTIONS 588 SET BY PROPORTIONATE MEASUREMENT.

FILED
RECEIVED

JUL 11 1960

COUNTY SURVEYOR
DOUGLAS COUNTY, ORE.