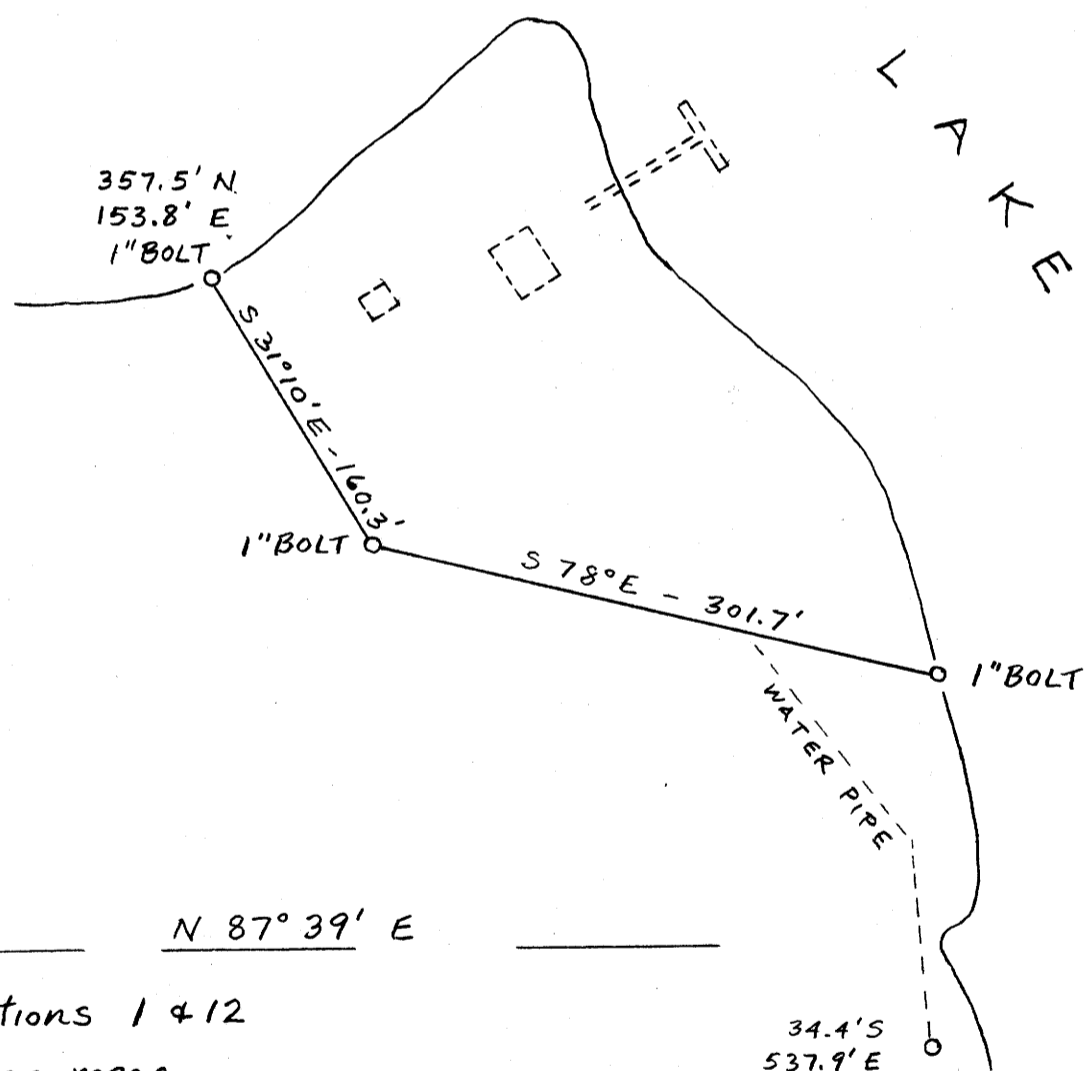


COUNTY SURVEYORS FILE DATA  
DO NOT REMOVE FROM OFFICE

CLEMENTSON SURVEY  
SECTION 1, T20S, R12W.  
SCALE 1"=100'  
JUNE 1960



S I L T C O O S  
L A K E



REGISTERED  
OREGON  
LAND SURVEYOR  
*Kenneth H. Bergeson*  
NOV. 5, 1948  
KENNETH H. BERGESON  
246

⊙ ————— N 87° 39' E —————

1/4 Cor. Sections 1 & 12  
Set by prop. meas.  
See Map File M8-38  
Douglas County

34.4' S  
537.9' E  
SPRING LOCATION  
IN LOT 2, SECTION 12

FILED *LL*  
RECEIVED

JUL 6 1960

COUNTY SURVEYOR  
DOUGLAS COUNTY, ORE.

C.S. File 51 / 103

Map File M 19 + 11 P