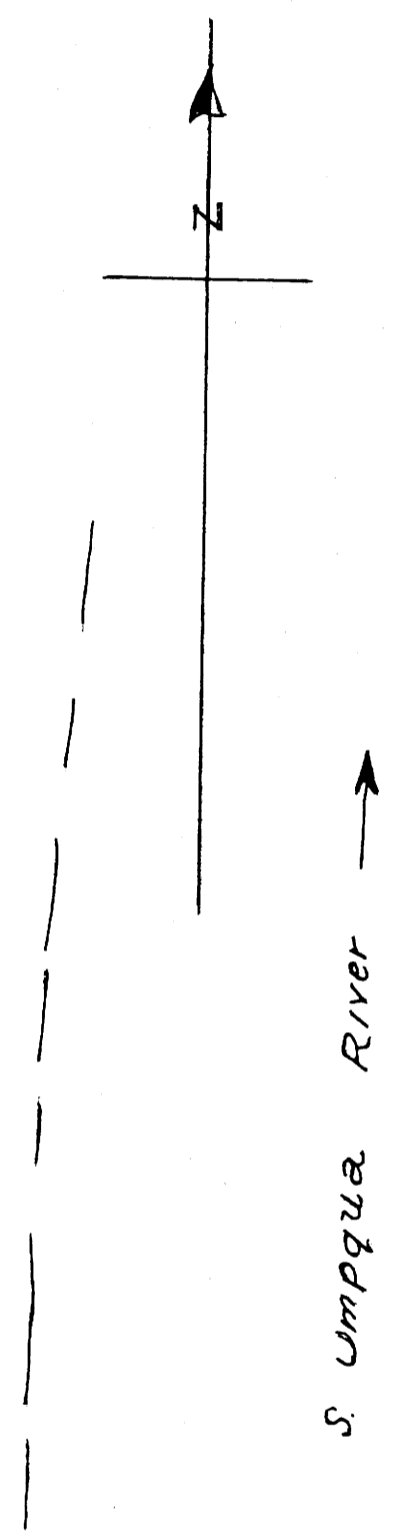
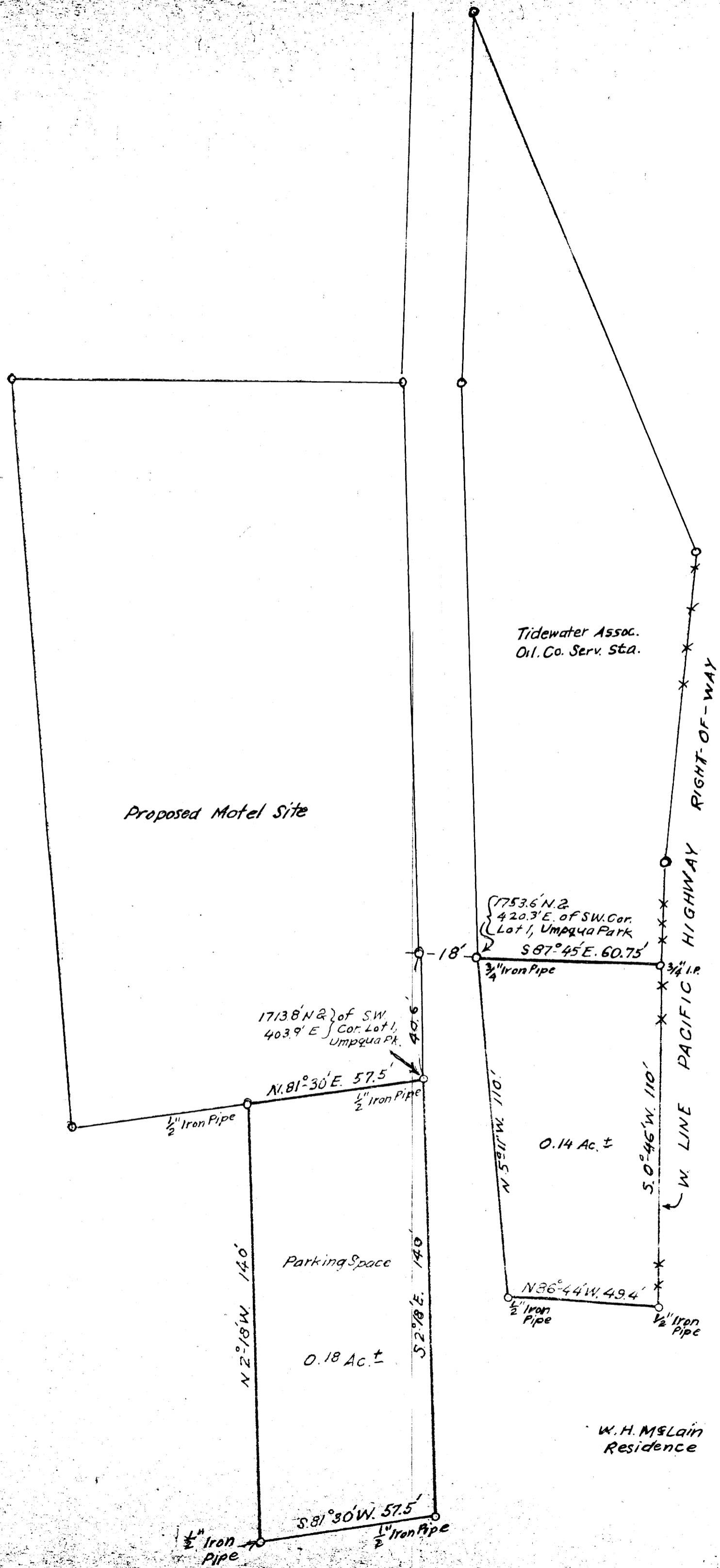


6-81W

6-81W



THIS COPY MADE FROM
A XEROX 2510
DATE July 12, 1989

COUNTY SURVEYORS FILE DATA
DO NOT REMOVE FROM OFFICE

FILED
RECEIVED
APR 8 1960
COUNTY SURVEYOR
DOUGLAS COUNTY ORE.

W. H. McLain
PARCELS OF LAND IN LOT 1, UMPQUA PARK,
IN SEC. 35, T. 27S; R. 6W; W. 1M;
DOUGLAS COUNTY, ORE.
JULY, 1956 1" = 30 ft.
Arthur Boyer