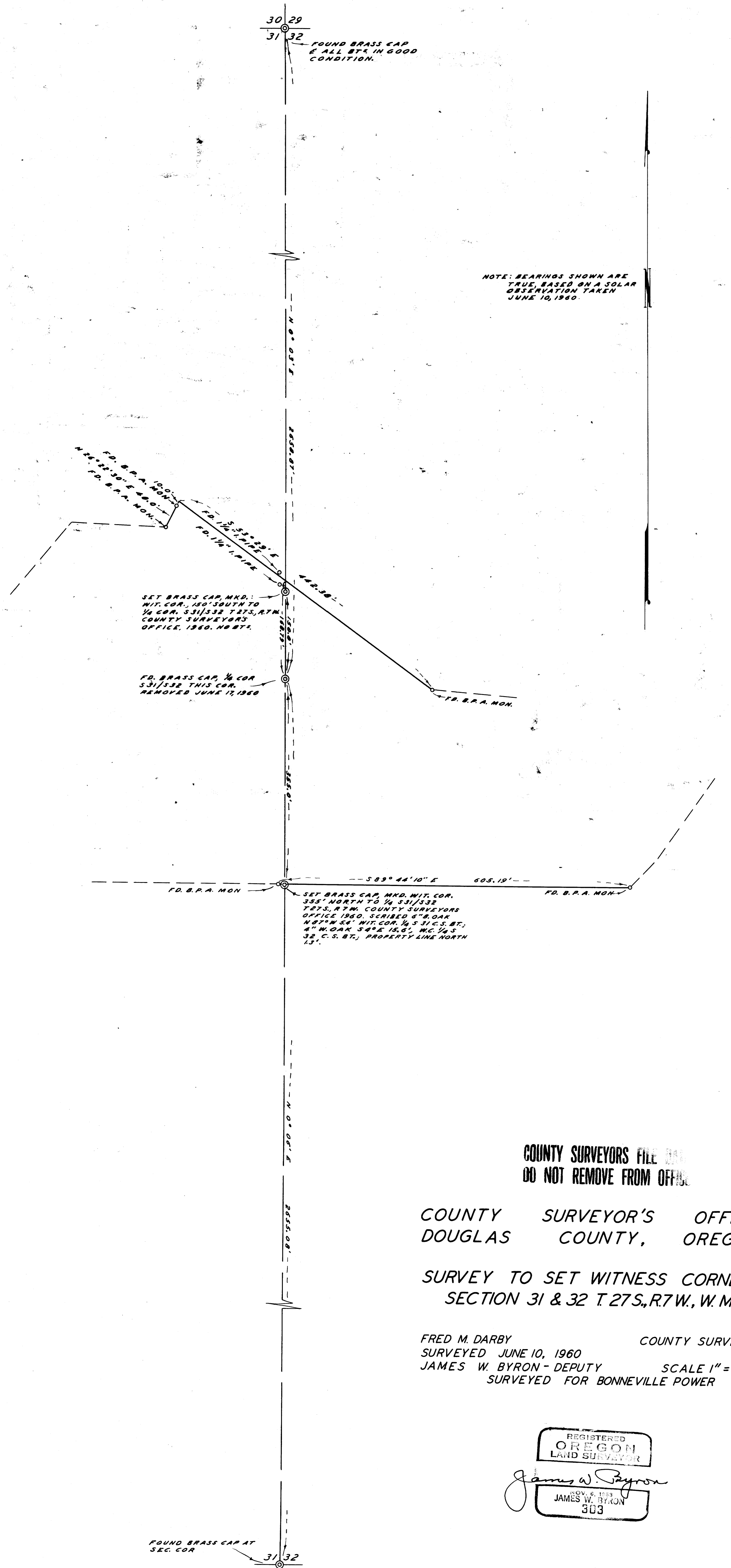


30 29
31 32
FOUND BRASS CAP
E ALL B.T. IN GOOD
CONDITION.

NOTE: BEARINGS SHOWN ARE
TRUE, BASED ON A SOLAR
OBSERVATION TAKEN
JUNE 10, 1960.



SET BRASS CAP, MKD. WIT. COR. 150' SOUTH TO 1/4 COR. S31/S32 T27S, R7W. COUNTY SURVEYORS OFFICE, 1960. NO B.T.

FD. BRASS CAP, 1/4 COR. S31/S32 THIS COR. REMOVED JUNE 17, 1960

SET BRASS CAP, MKD. WIT. COR. 355' NORTH TO 1/4 S31/S32 T27S, R7W. COUNTY SURVEYORS OFFICE 1960. SCRIBED 6" B. OAK N87°W 54' WIT. COR. 1/4 S 31 C.S. BT.; 4" W. OAK S4°E 15.6', W.C. 1/4 S 32, C.S. BT.; PROPERTY LINE NORTH 13'.

COUNTY SURVEYORS FILE
DO NOT REMOVE FROM OFFICE

COUNTY SURVEYOR'S OFFICE
DOUGLAS COUNTY, OREGON

SURVEY TO SET WITNESS CORNERS
SECTION 31 & 32 T.27S.,R.7W., W.M.

FRED M. DARBY COUNTY SURVEYOR
SURVEYED JUNE 10, 1960 BY
JAMES W. BYRON - DEPUTY SCALE 1" = 100'
SURVEYED FOR BONNEVILLE POWER

REGISTERED
OREGON
LAND SURVEYOR

James W. Byron
NOV. 6, 1953
JAMES W. BYRON
303

FOUND BRASS CAP AT
SEC. COR.
31 32