

COUNTY SURVEYORS FILE DATA
DO NOT REMOVE FROM OFFICE

SURVEY TO ESTABLISH PROPERTY CORNERS OF LOT 12, BLOCK 6 WAITE'S ADDITION TO ROSEBURG, DOUGLAS COUNTY, OREGON

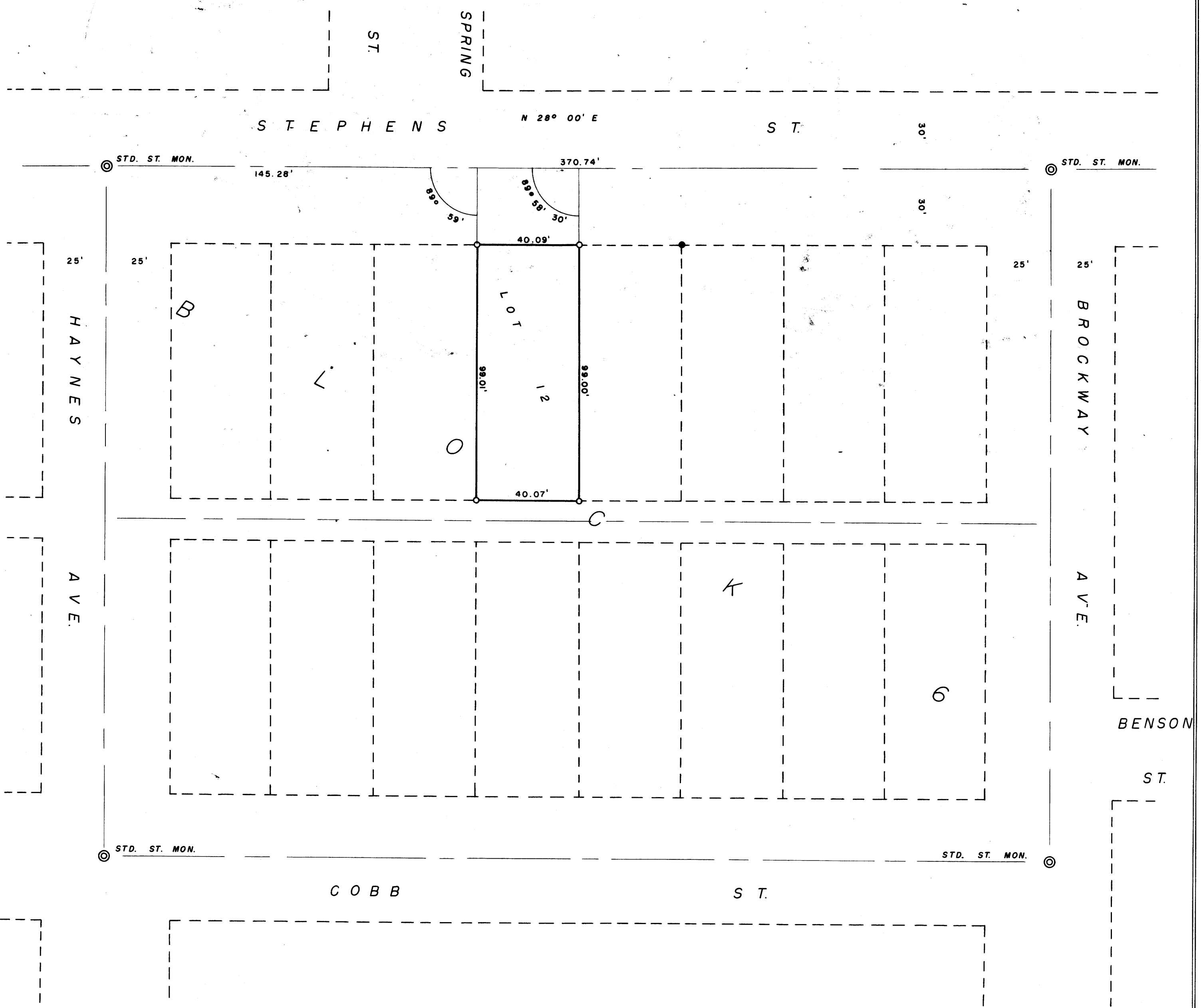
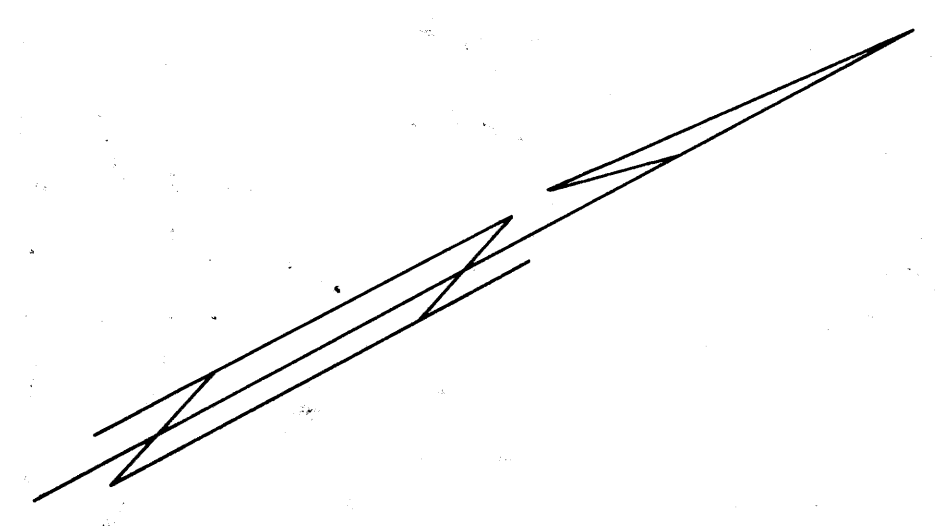
JUNE, 1960

SURVEYED FOR WM. LASSITER
G. R. LECKLIDER - ENGINEER

SCALE: 1" = 30'

O DENOTES STEEL TUBE WITH SURVEY CAP SET

NOTE: SURVEY BASED ON C.S. FILE 44/9.



FILED & RECEIVED

JUN 6 1960

COUNTY SURVEYOR
DOUGLAS COUNTY, ORE.

