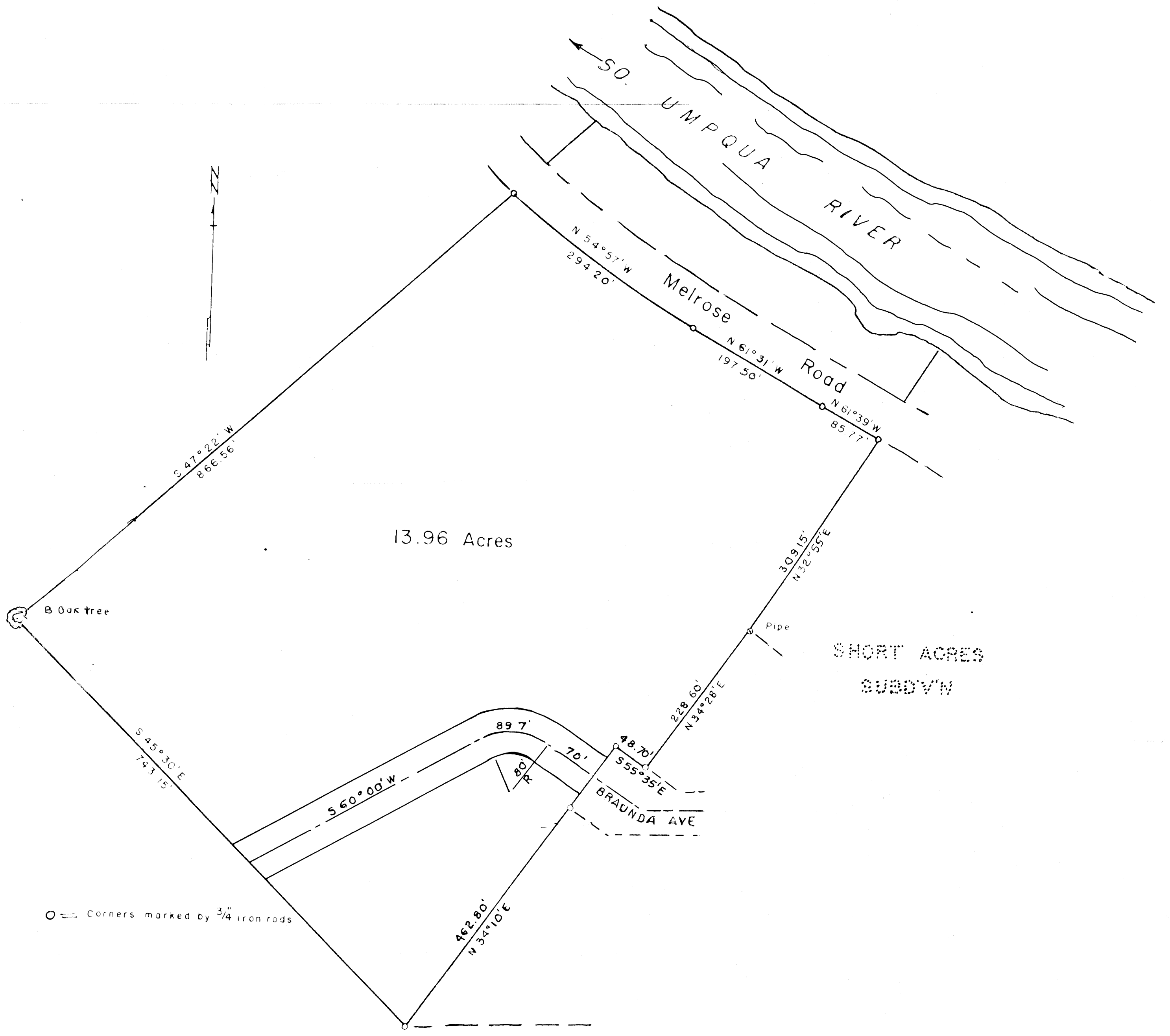


OL - 81 W
C.S. 40/318



PLAT OF PART OF
 S.E. $\frac{1}{4}$ of SEC. 16-T27S-R6W W.M.
 Douglas Co., Oregon.
 Dec. 1950 Scale 1"=100

THIS COPY MADE FROM
 A XEROX 2510
 DATE July 12, 1989

COUNTY SURVEYORS FILE
 DO NOT REMOVE FROM OFFICE

C.S. 40/318
 M 18-70