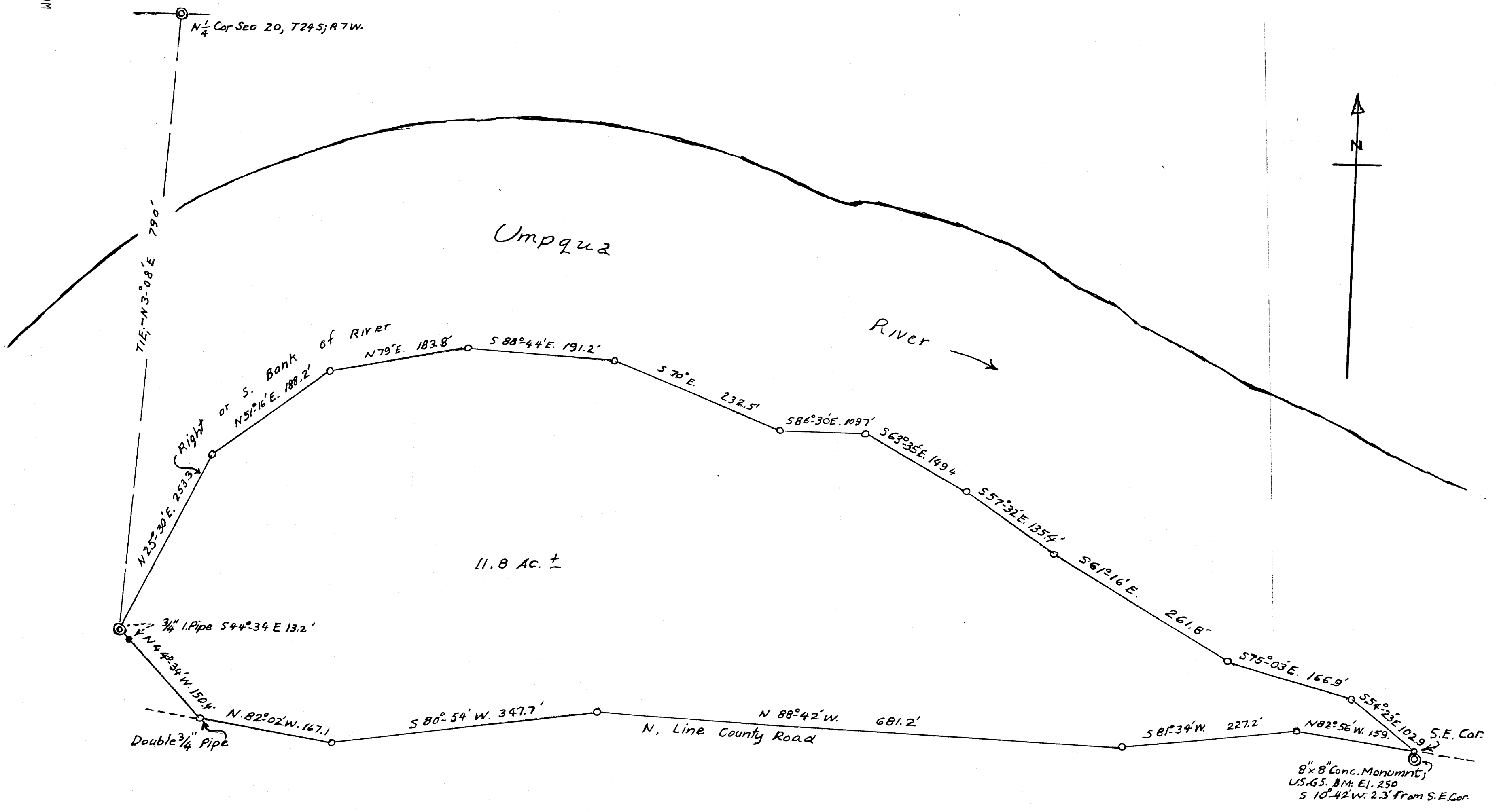


THIS COPY MADE FROM
A XEROX 2510
DATE July 12 1989



FILED
RECEIVED
MAY 26 1960
COUNTY SURVEYOR
DOUGLAS COUNTY, ORE.

M 18-59

COUNTY SURVEYORS FILE UNIT
DO NOT REMOVE FROM OFFICE

PORTION OF POWELL RANCH
IN SEC. 20, T24S, R.7W, W.M.;
BET. COUNTY ROAD & RIVER.
MAY, 1960 1" = 100 FT.

Arthur Boyer