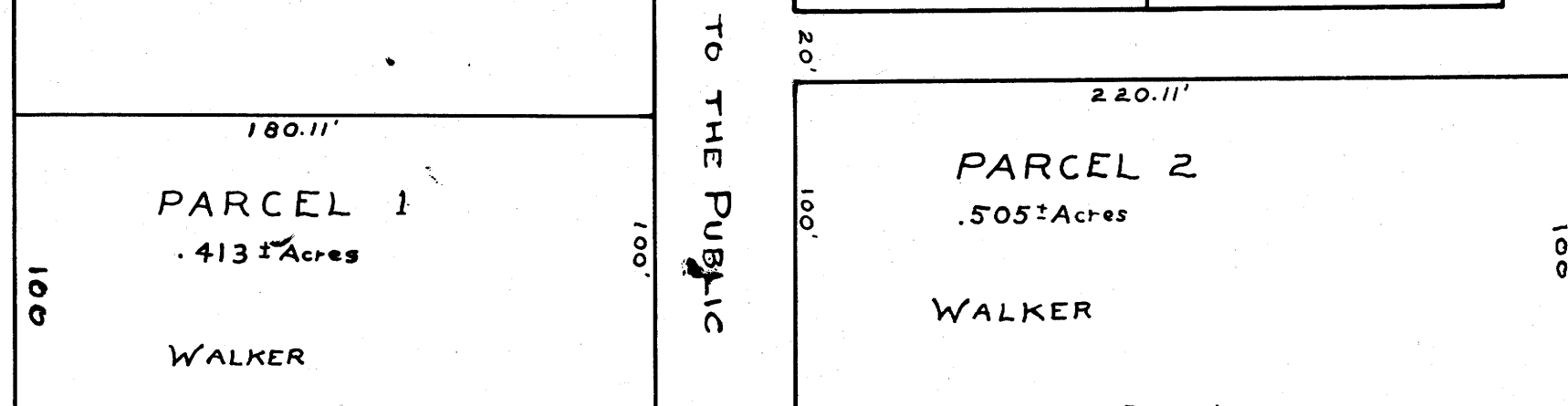
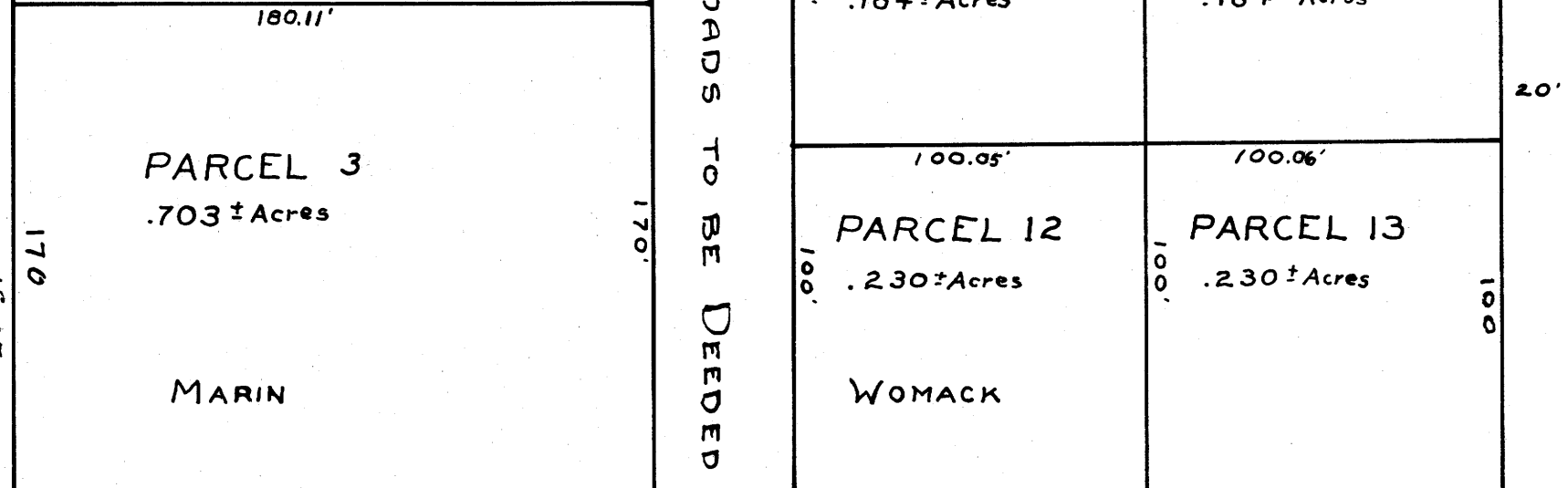
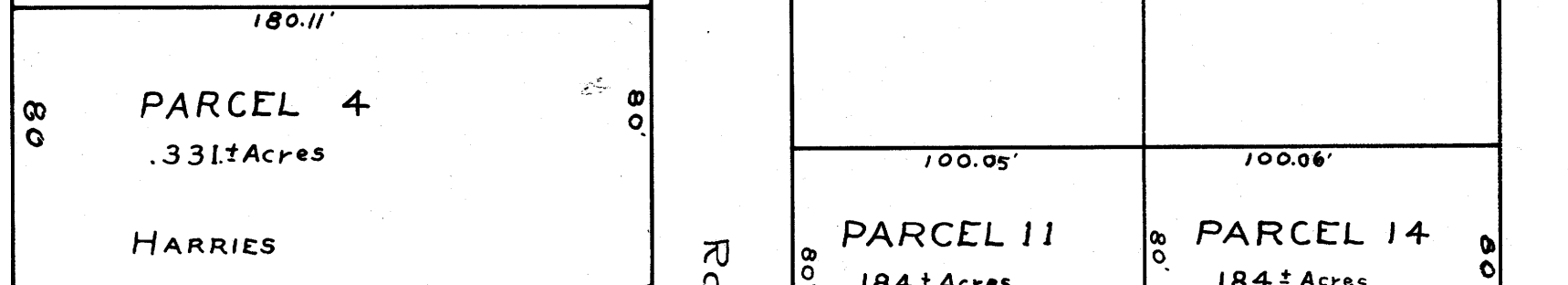
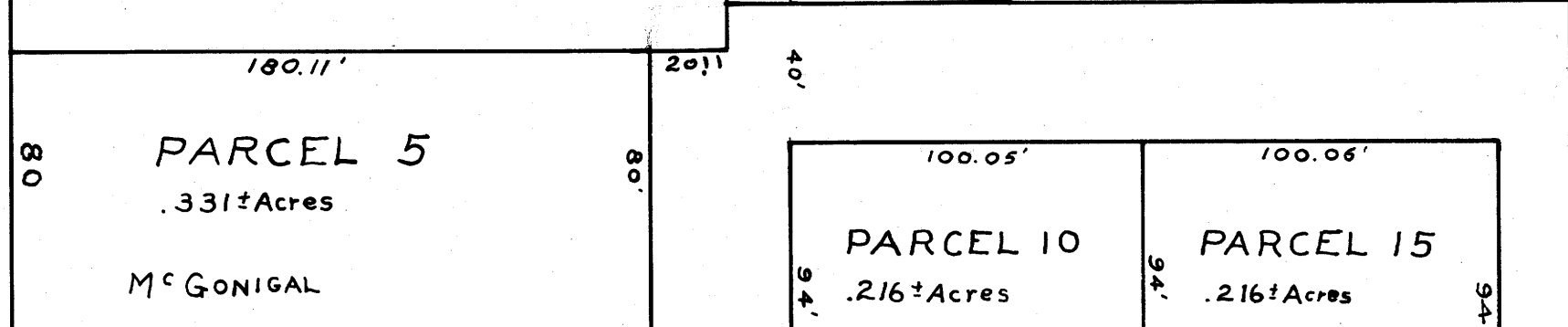
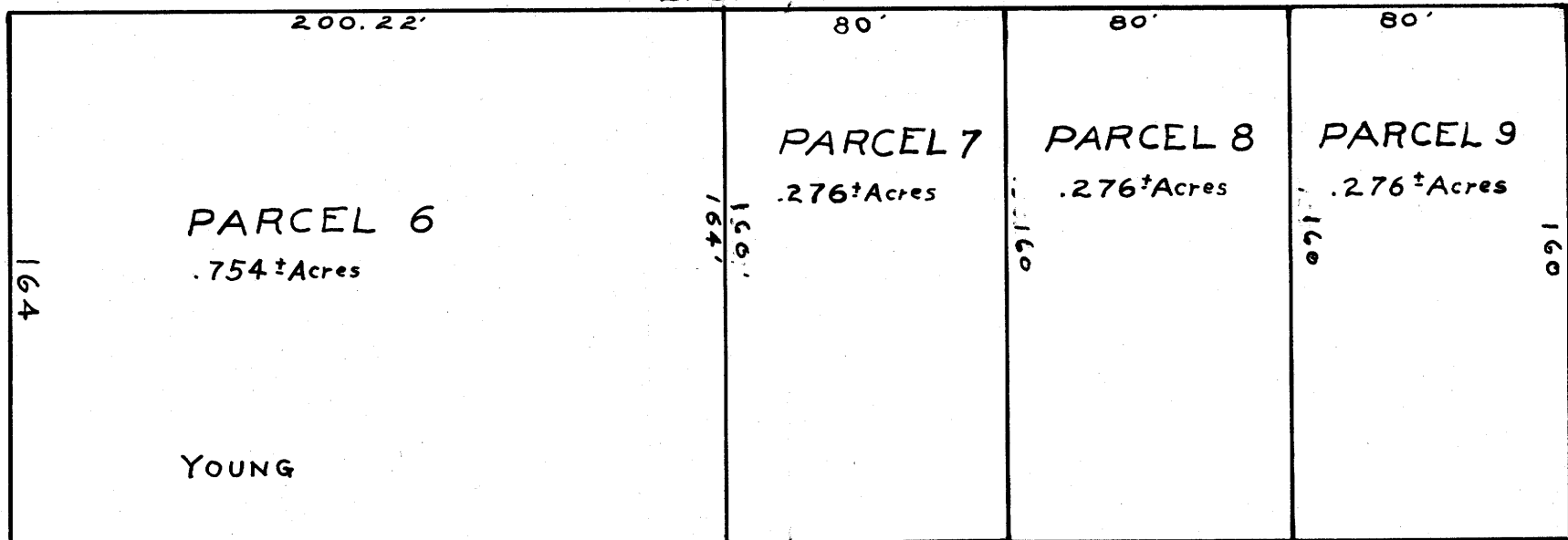


EAST 16.67 CHAINS



NORTH 15.15 CHAINS

ROADS TO BE DEEDED TO THE PUBLIC

SOUTH 9.00 CHAINS

SOUTH 6.00 CHAINS

WEST 3.33 1/2 CHAINS

SUBDIVISION OF
H.C. WOMACK PROPERTY
IN
T.27S. R.6W. W.M.

County Surveyor's Office
Roseburg Oregon
March 1945



SCALE 1"=50'

**COUNTY SURVEYORS FILE DRAWING
DO NOT REMOVE FROM OFFICE**

NOTE.
This map and the accompanying
deed descriptions were prepared
from the original deed description
and not from a field survey.

EXCEPTION-
Conveyed to M.M. RUTTER
& A.E. RUTTER
Recorded Vol. 94 Page 107
DEED RECORDS, DOUGLAS Co.

5.23 CHAINS
345.18 ft. W to SE.
Interior Angle corner of
The Isaac Jones D.L.C.

WEST 3.33 1/2 CHAINS