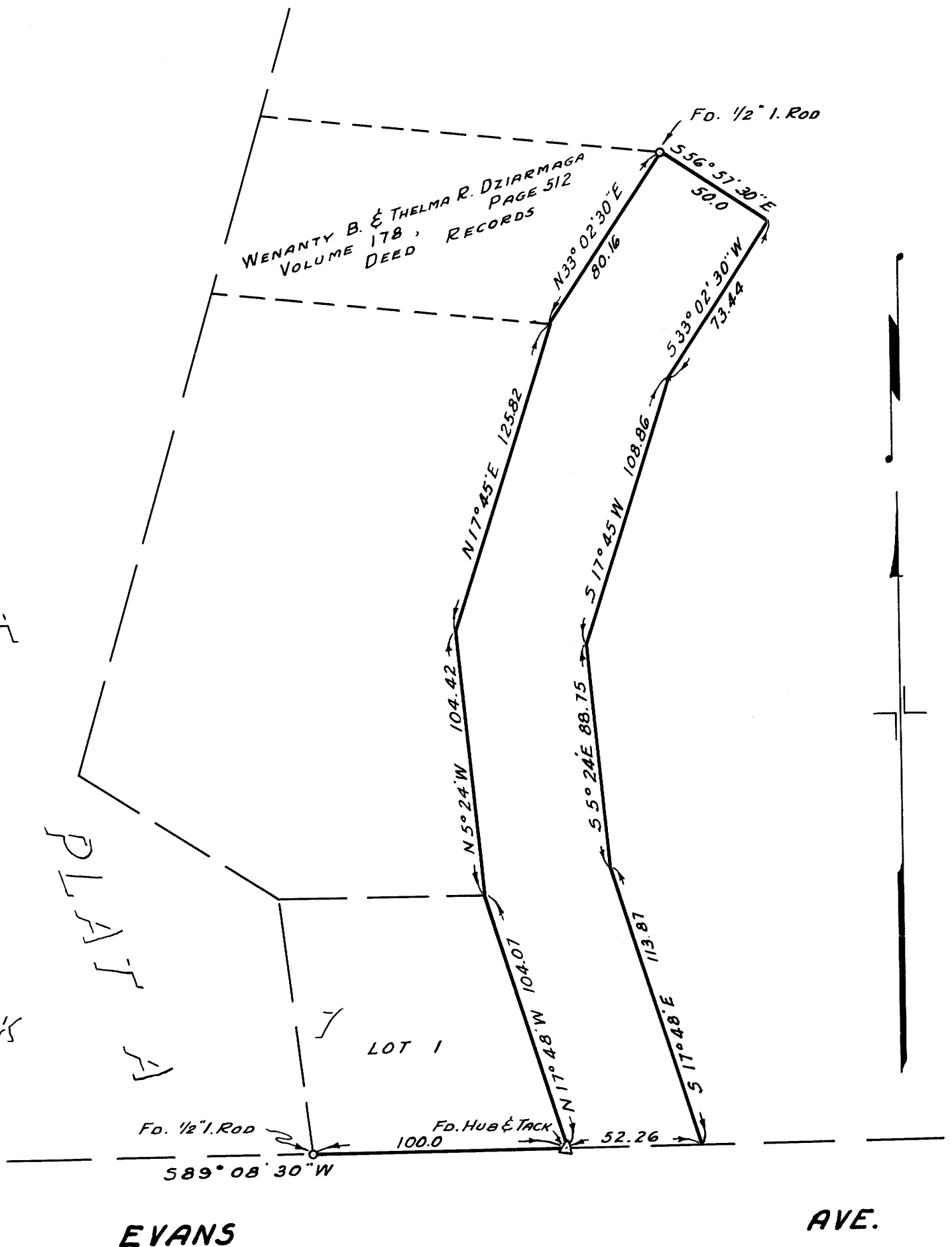


HUCREST

PLAT A

BLOCK

LOT 1



NOTE:-
BEARINGS BASED ON RECORD BEARING OF EVANS AVE. PER PLAT A.

COUNTY SURVEYORS FILE
DO NOT REMOVE FROM OFFICE

COUNTY SURVEYOR'S OFFICE.
DOUGLAS COUNTY, OREGON.

SURVEY FOR ROAD EASEMENT.
SECTION 11, T27S., R6W. W.M.



BEN B. IRVING
SURVEYED JULY 24, 1951
A.R. EVANS

COUNTY SURVEYOR
BY
DEPUTY

SCALE 1"=50'