

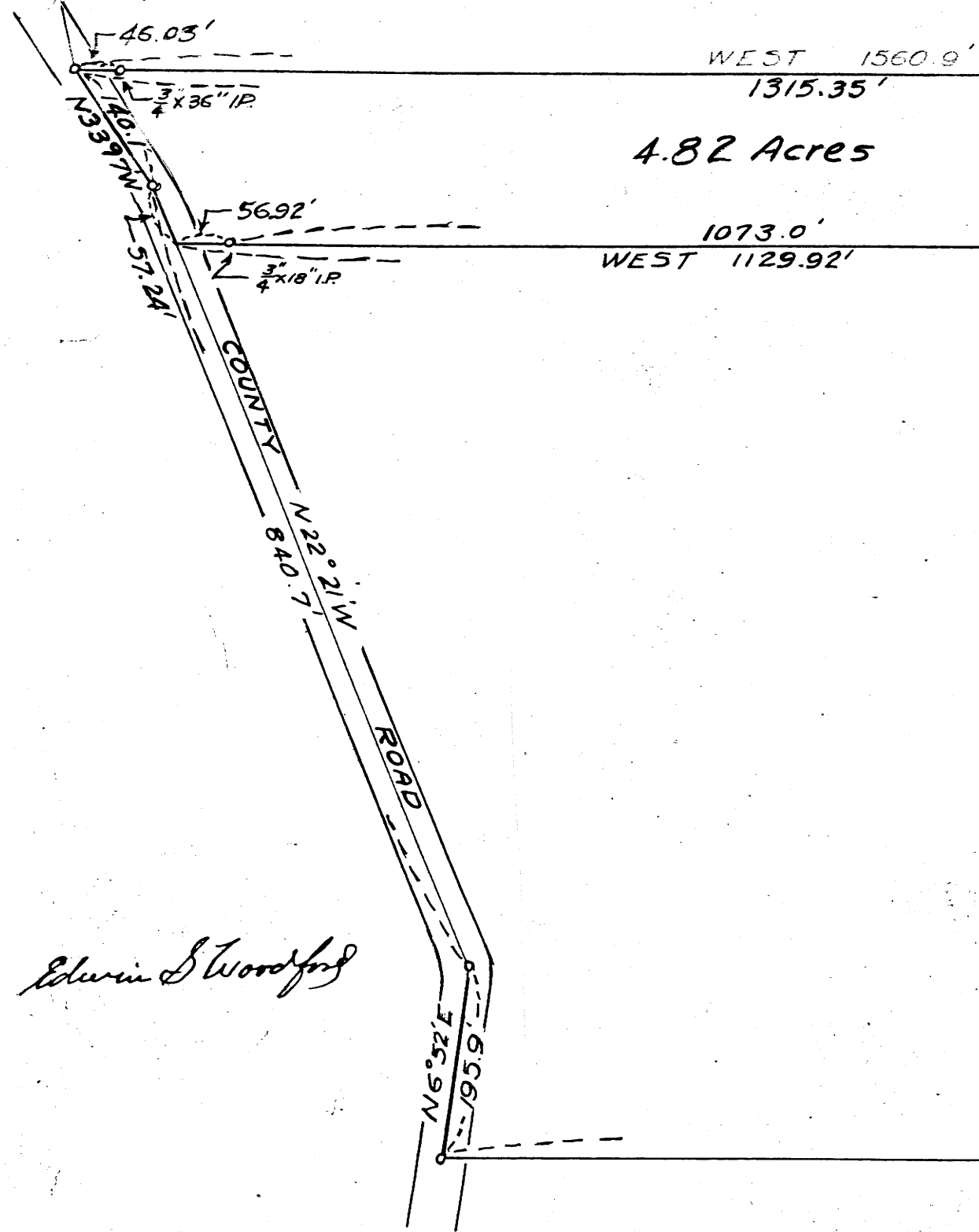
COUNTY SURVEYOR TILL  
DO NOT REMOVE FROM OFFICE

# MAP

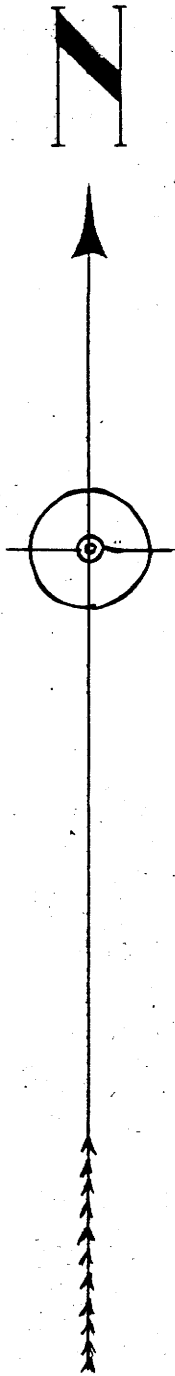
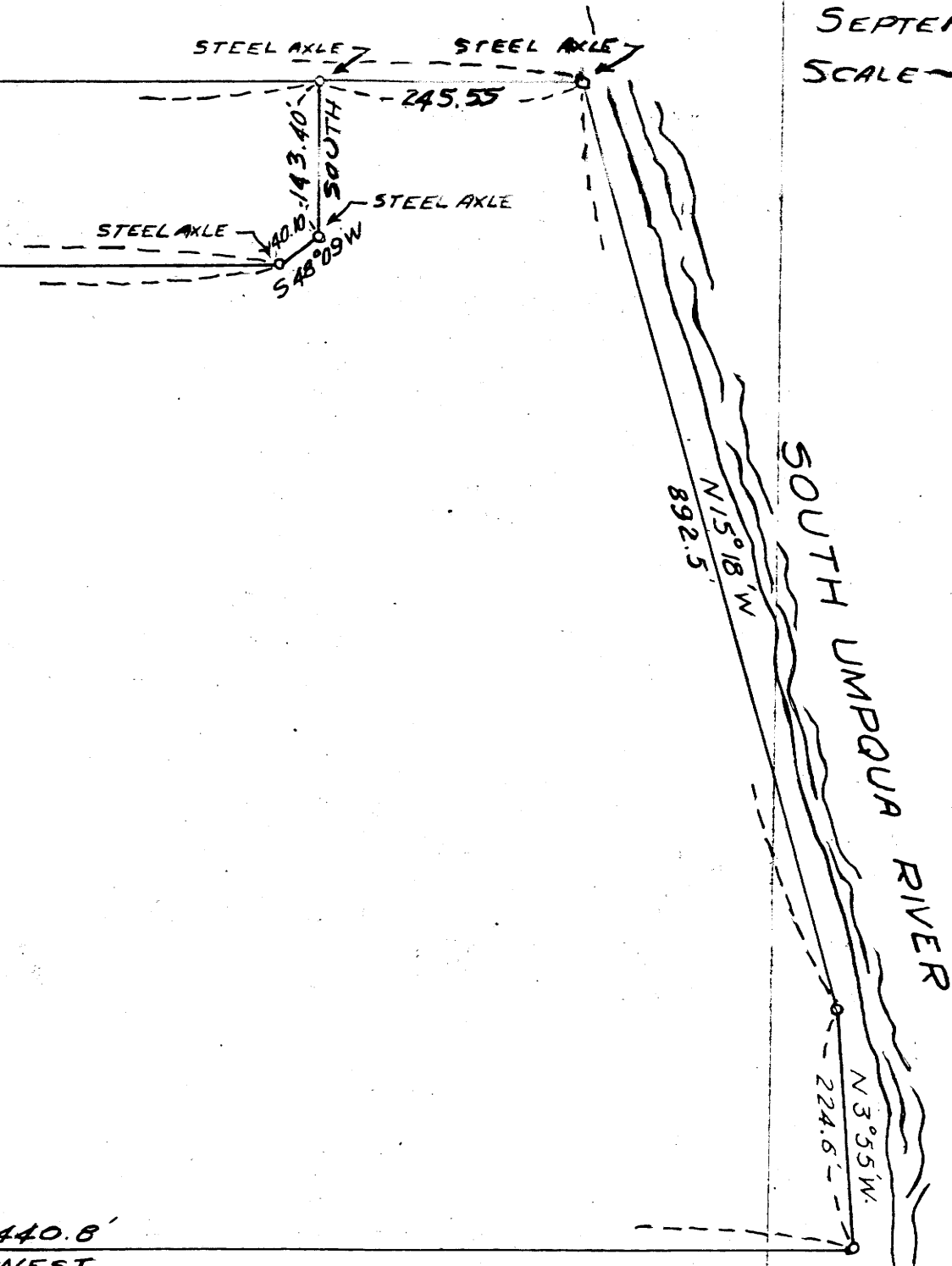
OF  
PORTION OF CONN ESTATE  
SEC. 9, T27S, R6W, W.M.  
SURVEYED FOR FRED A. GOFF  
SEPTEMBER 1947  
SCALE - 1 inch = 150 ft.

C.S. 40/136  
M 18-54

NW INT. "L" COR.  
WM. MCKINNEY DLC #50.



4.82 Acres



*Edwin S Woodford*

-26-

C.S. FILE 40/136  
M 18-54