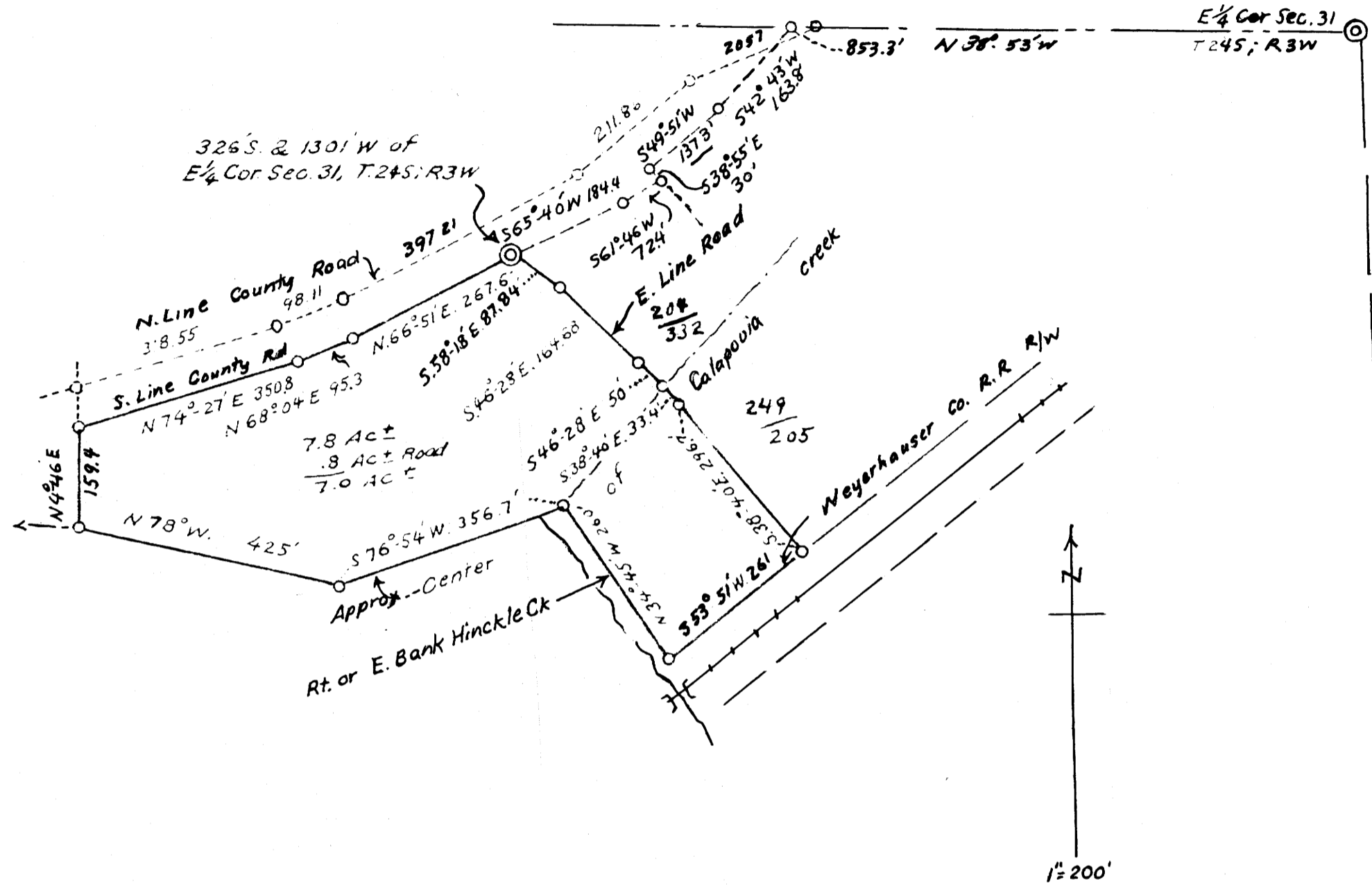


8E-81W

THIS COPY MADE FROM
A XEROX 2510
DATE JULY 12, 1989



FILED *ll*
RECEIVED

MAY 3 1960

COUNTY SURVEYOR
DOUGLAS COUNTY, ORE.

COUNTY SURVEYORS WILL NOT
DO NOT REMOVE FROM OFFICE

PROPERTY PREVIOUSLY HELD BY
A.V. & MARY A. ABEENE
IN SE 1/4 SEC. 31, T.24S, R.3W, WIL. MER.
IN VICINITY OF JUNCTION OF
HINCKLE CK. & CALAPOOIA CK.
FEB. 1960

Arthur Boyer 1"=200'

M 18-38