

COUNTY SURVEYORS FILE DATA  
DO NOT REMOVE FROM OFFICE

MAP FILE M 18 32

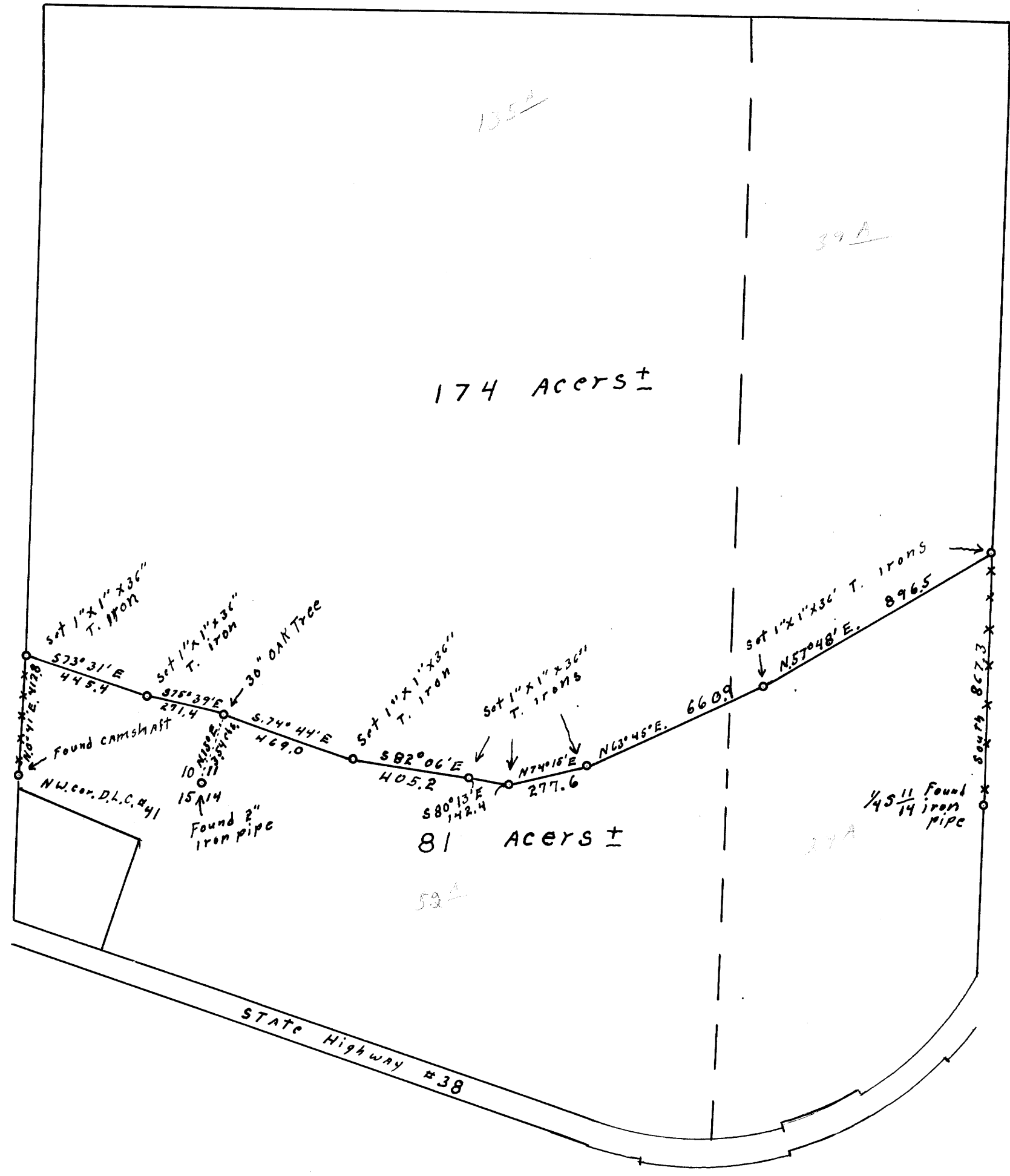
SURVEY FOR DEED DESCRIPTION

Sects. 10, 11, 14, & 15, T. 22 S., R. 6 W. W.M.

Scale 1" = 400' March 30, 1960

for

Jim Haines & Alex Sawyer



REGISTERED  
OREGON  
LAND SURVEYOR

*Wilford N. Haines*  
MAY 7, 1948  
WILFORD N. HAINES  
239

FILED *LL*  
RECEIVED

APR 28 1960

COUNTY SURVEYOR  
DOUGLAS COUNTY, ORE.