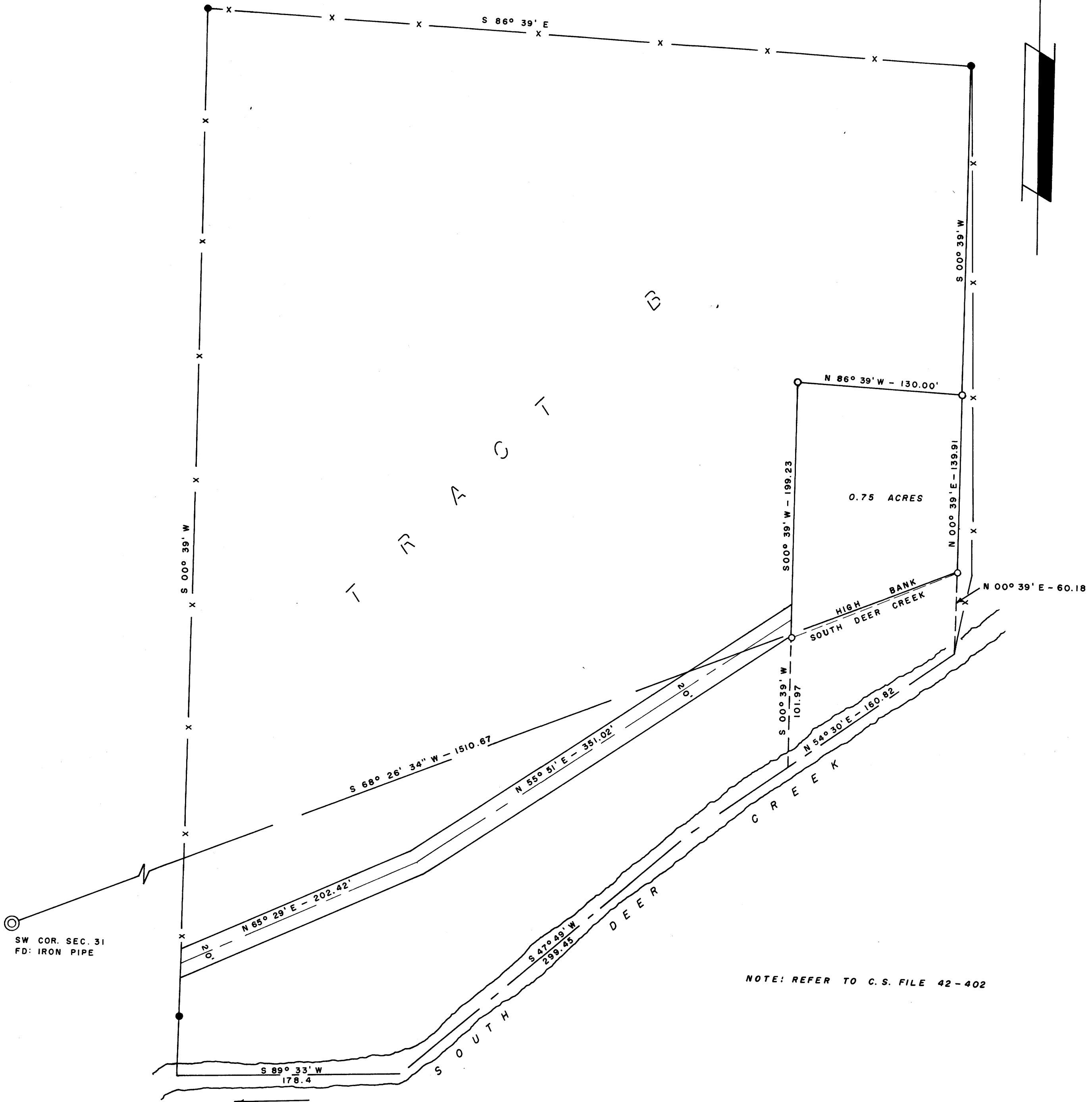
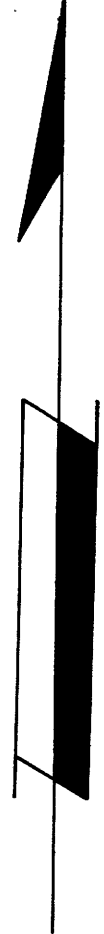
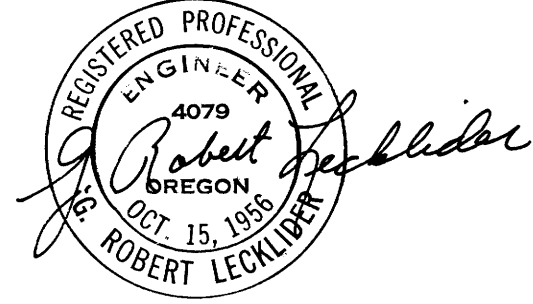


COUNTY SURVEYORS FILE DATA
DO NOT REMOVE FROM OFFICE

SURVEY OF A PORTION OF TRACT B IN SEC. 31, T.27 S., R.4 W. W.M. DOUGLAS COUNTY, OREGON SURVEYED FOR: GEORGE W. JAMES MARCH, 1960 SURVEYED BY: G. R. LECKLIDER SCALE: 1" = 60'

○ DENOTES MONUMENT SET (STEEL TUBE WITH SURVEY CAP)
● DENOTES MONUMENT FOUND (1/2" IRON ROD)



NOTE: REFER TO C. S. FILE 42-402

FILED
RECEIVED

MAR 30 1960

COUNTY SURVEYOR
DOUGLAS COUNTY, ORE.