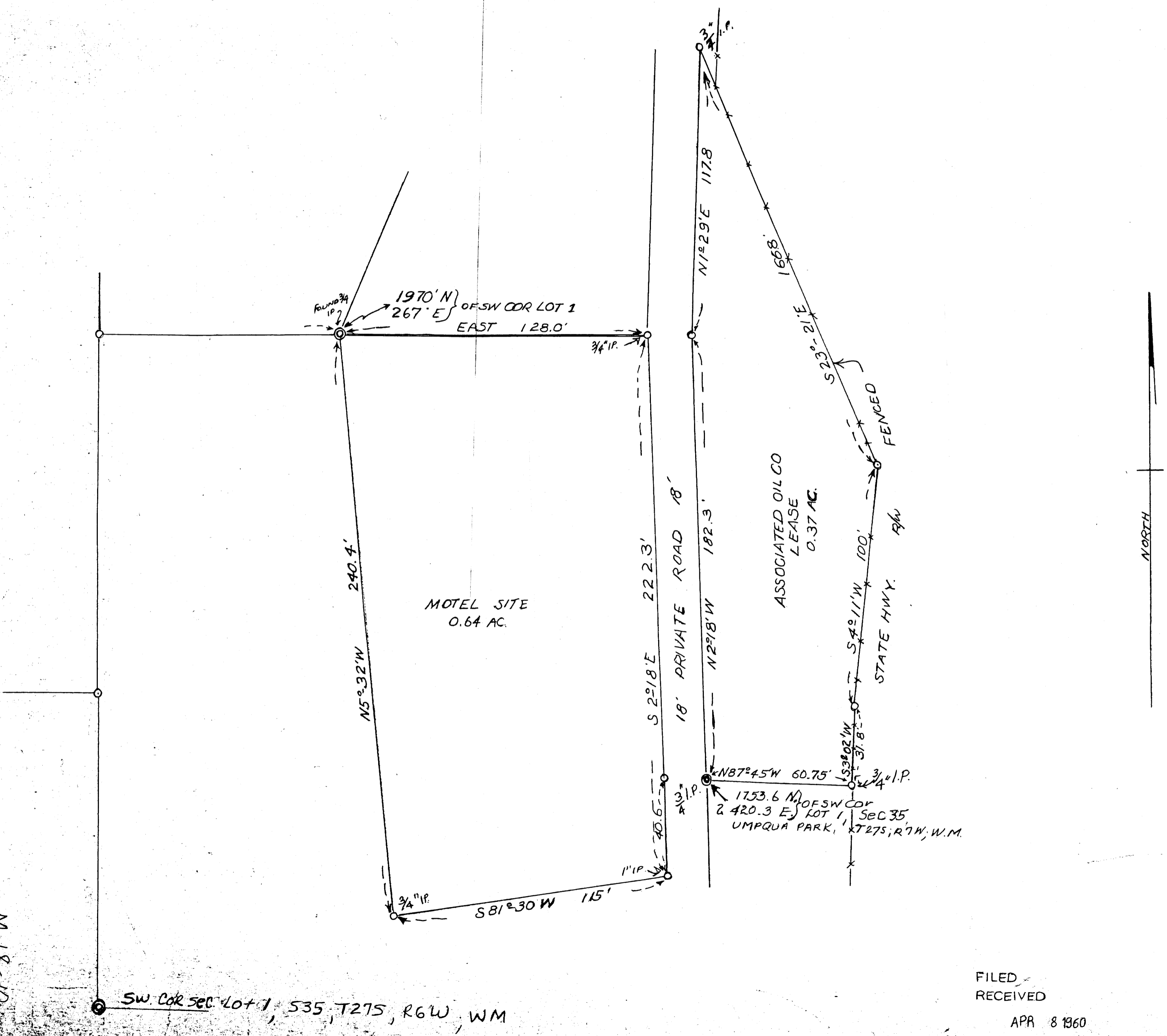


M 18-10

THIS COPY MADE FROM
A XEROX 2510
DATE July 12 1984



COUNTY SURVEYORS FILE ONLY
DO NOT REMOVE FROM OFFICE

FILED
RECEIVED
APR 8 1960
COUNTY SURVEYOR
DOUGLAS COUNTY, ORE

W.H. McLAIN TO
ASSOCIATED OIL CO
TRACT-IN-SEG 35
T27S, R6W; WM.
DOUGLAS COUNTY ORE
ALSO SITE FOR McLAIN PROPOSED MOTEL
APR 1956
W.H. McLain

M 18-10

SW. COR SEC 40+1, S35, T27S, R6W, WM