

THIS COPY MADE FROM
A XEROX 2510
DATE July 12, 1989



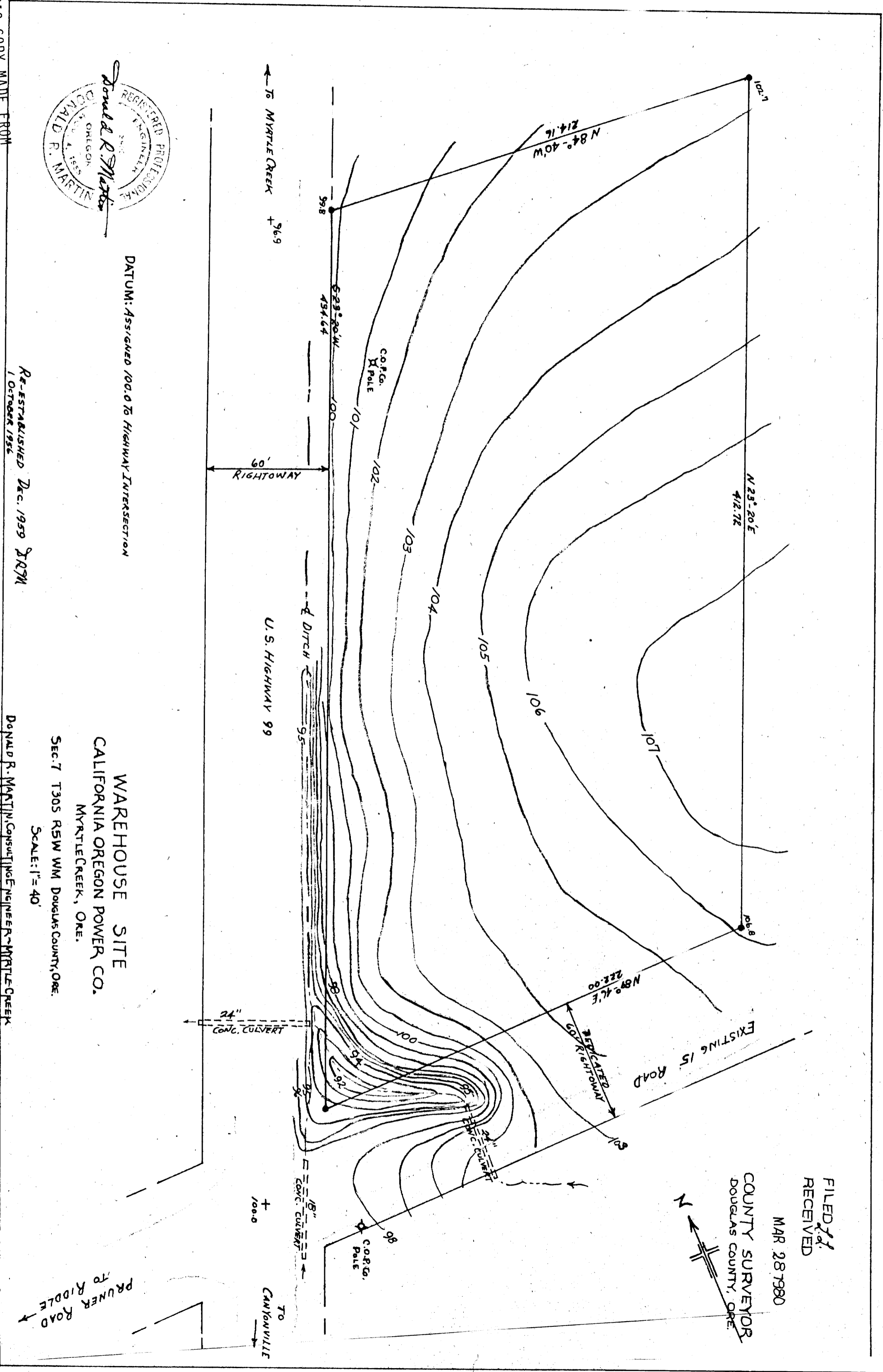
DATUM: ASSIGNED 100.0 TO HIGHWAY INTERSECTION

RE-ESTABLISHED Dec. 1959 DRM
1 OCTOBER 1956

Donald R. Martin, Consulting Engineer, Myrtle Creek

WAREHOUSE SITE
CALIFORNIA OREGON POWER CO.
MYRTLE CREEK, ORE.
SEC. 7 T305 R5W WM DOUGLAS COUNTY, ORE.
SCALE: 1" = 40'

COUNTY SURVEYOR
DO NOT REMOVE FROM



FILED
RECEIVED
MAR 28 1980
COUNTY SURVEYOR
DOUGLAS COUNTY, ORE.

PRUNER ROAD
TO RIDDLE

TO
CANYONVILLE